

TOUCH PANEL 10"

Operating Manual



Copyright by Carl Valentin GmbH / 7903105.0317

Information on the scope of delivery, appearance, performance, dimensions and weight reflect our knowledge at the time of printing.

We reserve the rights to make modifications.

All rights, including those regarding the translation, are reserved.

No part of this document may be reproduced in any form (print, photocopy or any other method) or edited, copied or distributed electronically without written permission from Carl Valentin GmbH.

Due to the constant further development of our devices discrepancies between manual and device can occur.

Please check www.carl-valentin.de for the latest update.

Trademarks

All named brands or trademarks are registered brands or registered trademarks of their respective owners and may not be separately labelled. It must not be concluded from the missing labelling that it is not a registered brand or a registered trademark.



Carl Valentin GmbH

Postfach 3744
78026 Villingen-Schwenningen
Neckarstraße 78 – 86 u. 94
78056 Villingen-Schwenningen

Phone +49 7720 9712-0
Fax +49 7720 9712-9901

E-Mail info@carl-valentin.de
Internet www.carl-valentin.de

Table of Contents

Table of Contents	3
1 Introduction	5
1.1 General Instructions	5
1.2 Safety Instructions	5
1.3 Product Description	6
1.4 Protection Against Touching Electrical Parts	6
2 Installation	7
2.1 Scope of Delivery	7
2.2 Initial Operation	7
2.3 Connection	9
3 Quick Start After First Switching On	11
4 Operation CV-HMI	13
4.1 View: Group Status.....	13
4.2 View: Direct Operation	13
4.3 Menu: Printer Selection	14
4.4 Add Printer to the Printer List	15
4.5 Network Search	15
4.6 Printer List	16
4.7 Display Group Status.....	17
4.8 Operating Connection With Individual Printer	18
4.9 Direct Operation Connection	19
4.10 Application Settings	19
4.11 Delete Printer From The Printer List.....	22
4.12 Add Printer Manually	22
4.13 Establish Direct Connection To The Printer	23
5 Configuration	25
5.1 Update of HMI Application.....	25
5.2 Standard Configuration	26
5.3 Access to Settings of Operating System.....	26
5.4 Change the Network Settings.....	27
5.5 Onboard Keyboard	29
5.6 Touch Display Calibration	30
5.7 System Restart.....	31
6 Environmentally-Friendly Disposal	31
7 Index	33

1 Introduction

1.1 General Instructions

Basic information and warning references with the corresponding signal words for the danger level are as follows specified in this manual:



DANGER identifies an extraordinarily great and immediate danger which could lead to serious injury or even death.



WARNING identifies a possible danger would could lead to serious bodily injury or even death if sufficient precautions are not taken.



WARNING of cutting injuries.
Pay attention that cutting injuries caused by blades, cutting devices or sharp-edged parts are avoided.



WARNING of hand injuries.
Pay attention that hand injuries caused by closing mechanical parts of a machine/equipment are avoided.



WARNING of hot surfaces.
Pay attention so as not to come into contact with hot surfaces.



CAUTION indicates a potentially dangerous situation which could lead to moderate or light bodily injury or damage to property.



NOTICE gives you tips. They make a working sequence easier or draw attention to important working processes.



Gives you tips on protecting the environment.



Handling instruction



Optional accessories, special fittings

Date

Information in the display

1.2 Safety Instructions

Before you start running the Touch Panel you have to read this instruction manual.

This instruction manual is to keep at a place that is accessible for all users.

The faultless and safe operation of Touch Panel presupposes an adequate transport, appropriate storage, correct installation and initial operation as well as proper operation.

This instruction manual contains the most important instructions for an appropriate use of Touch Panel.

The manual and especially the safety instructions are to note from staff working with the Touch Panel.

**CAUTION!**

Please observe the regulations and rules for accident prevention that are valid for your place of installation.

Installation, initial operation and maintenance are only allowed by trained and qualified technical staff.

1.3 Product Description

With help from the Touch Panel it is possible to configure and control one or several (max. 4) printer/print modules. This applies to settings of parameters as well as to control of current print orders. In principle you can configure and modify at the Touch Panel all parameters that you also can adjust by the printers function menu.

The communication to the control system is effected by an Ethernet interface.

The Touch Panel is intended for the use in industrial sectors and is build according to technical stand and approved safety-related rules. However, the use of Touch Panel can cause impairment of machine or other material assets.

The Touch Panel fulfils the requirements of EMV rules and harmonized European standards.

1.4 Protection Against Touching Electrical Parts

For operation of Touch Panel it is necessary that some parts are energized with more than 50 VAC. If you touch these parts, this can cause a perilous electric shock.

**CAUTION!**

This can cause death or heavy health or material damages.

The Touch Panel may be operated only with original connecting cable at the specially intended printer connection or with the specially provided power supply unit, even if the Touch Panel is only connected for test purposes.

**DANGER!**

During operation all covers must be closed!

2 Installation

2.1 Scope of Delivery

During transport and at storage of Touch Panel you have to protect it against inadmissible strain such as mechanical load.

In case of a damaged Touch Panel you have to avoid direct skin contact, swallowing or inhaling of withdrawing liquid or gases.

Immediately after receipt of package you have to unpack all parts to ensure that nothing was damaged and to check if all parts correspond to the delivery note.



NOTICE!

Keep the original packaging for possible return shipments.

2.2 Initial Operation

Carl Valentin GmbH provides a high-quality PC hardware. The user is responsible for software installation, use and maintenance.

You receive a completely pre-configured product which is operational immediately after switching on.

The operating manual for the user interface of Carl Valentin label printers and print modules is a component of this instruction. The application starts after switching on automatically.

Connect the Touch Panel with the power supply contained in the delivery or an appropriate 12 V DC power source which supplies at least 5 A DC. For starting the system press the On/Off button.

Additional screwed power plug

The Touch Panel is delivered with an additional screwed power plug. Please observe the following PIN assignment:

PIN1: +12V DC

PIN2: GND

PIN3: not occupied

Pay attention to the correct polarity otherwise you destroy irrevocably the Touch Panel.

In the delivery state, for the network operation the Touch Panel is configured at a DHCP server (automatic setting of IP address).

Connect the Touch Panel with your network using an appropriate network cable at the socket (5).

Alternatively the Touch Panel can be integrated in an existing WLAN (see chapter 5.4).

When installing you have to consider a circulating free space of at least 30 mm to ensure a sufficient circulation of air.

The installation of Touch Panel in horizontal direction, the additional heat sources below the Touch Panel can lead to an accumulation of heat. Please note the admissible temperature range and ensure a sufficient head conduction.

**CAUTION!**

Make sure that the Touch Panel is not used in dump or wet area.

The Touch Panel may be operated only with original connecting cable at the specially intended printer connection or with the specially provided power supply unit.

The installation of Touch Panel is only allowed with suitable tools and only with zero potential and by qualified staff.

Electrical installation has to be accomplished according to the appropriate regulations.

**NOTICE!**

Creating network connection: Configure network connection by Ethernet.

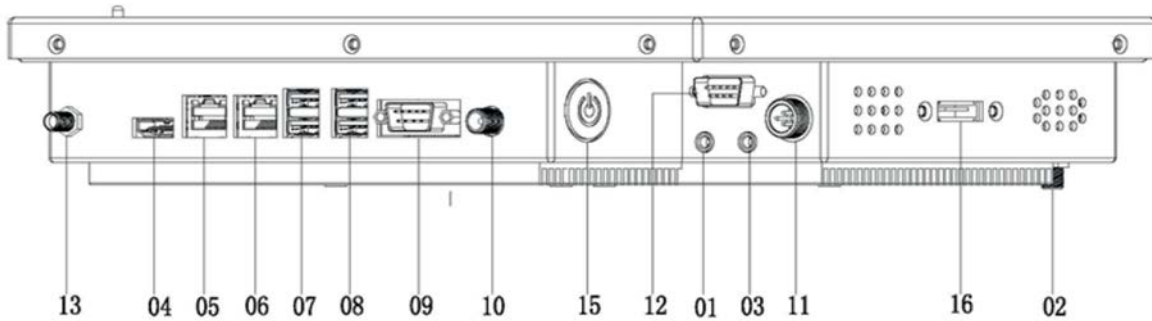
Voltage supply: Make sure that voltage supply is 12 V.

2.3 Connection



CAUTION!

As voltage supply 12 V must be given.

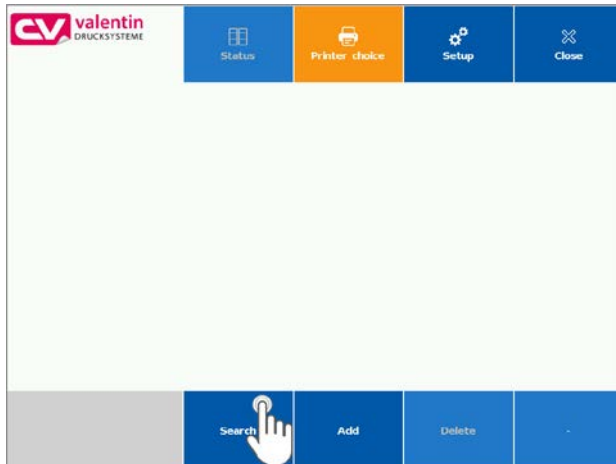


- [n] Here not documented device connection. For the use with CV-HMI not supported.
- n Here documented device connection. Function by using the Touch Panel as CV-HMI documented.
- [01] Microphone input
- 02 Screwed WLAN antenna connection
- [03] Loudspeakers connection
- [04] Display port (HDMI by adapter)
- 05 10/100/1000Mbit LAN socket
- 06 10/100/1000Mbit LAN socket
- 07 2x USB 3.0
- 08 2x USB 2.0
- [09] COM1; RS232
- 10 Mains adapter connection
- 11 Alternative mains adapter connection
- 12 RS 232
- 13 Screwed WLAN antenna connection
- 15 On/Off switch
- [16] E-SATA connector

The delivery contains the following items: 100-240 V switching power supply, touchpen, operating manual and driver CD for Windows, Linux or Mac operating systems.

3 Quick Start After First Switching On

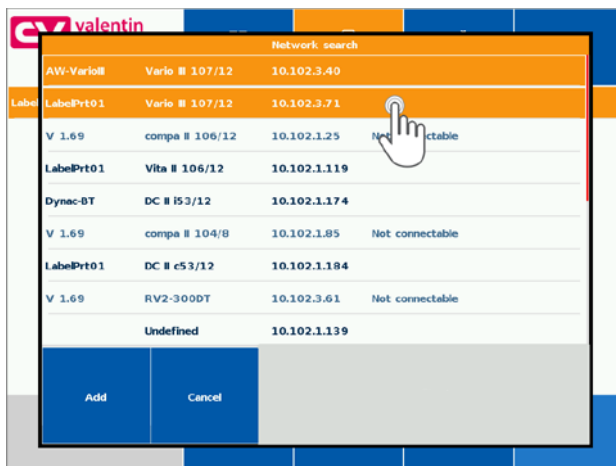
As the first step, add the existing printers in the network to your printer list.



After first switching on, the application presents the **Printer selection**.

Tap on **Search** to add existing printer in the network to your printer list.

Select available printers for the monitoring.



After starting, all available printers in the network are listed.

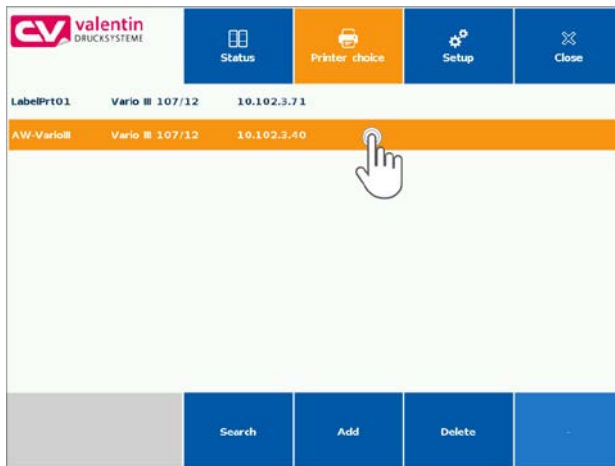
Tap on one or more (up to four) printers, to add them to the printer list.

Add one or more printers to your printer list.

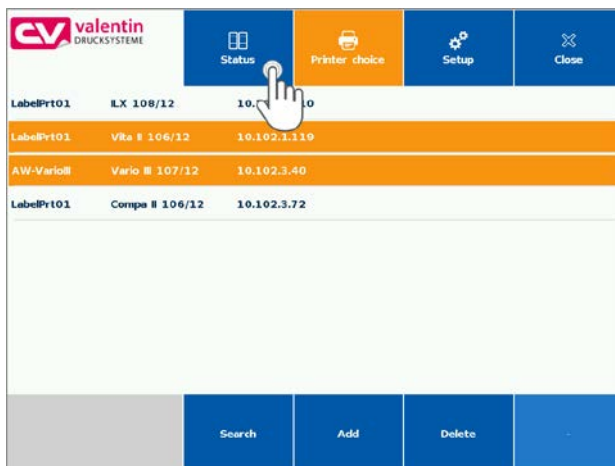


The selected printers can be added to the printer list.

Click Cancel to exit the procedure without printer selection.

Start monitoring of the selected printer.

Select one or more printers in your printer list.



Click the **Status** button to change to the group view – direct operation.

4 Operation CV-HMI

The application (CV-HMI) described in this manual, serves for monitoring and controlling of connected label printers and direct print modules from Carl Valentin.

The printers must be addressable by a network connection.

The application provides two basic views.

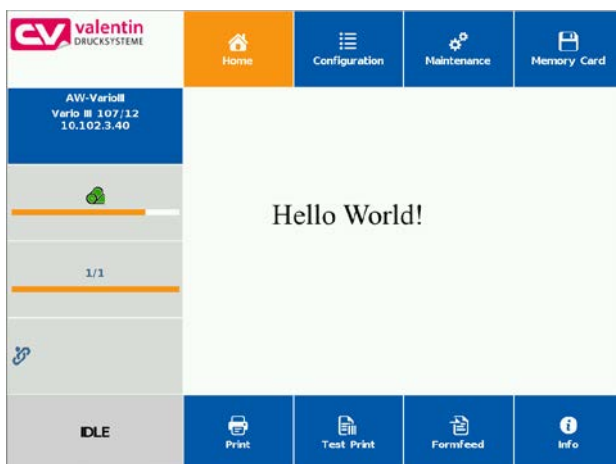
4.1 View: Group Status



In the view **Group status**, four printers can be monitored at the same time. The printer status as well as information concerning the current print order are shown.

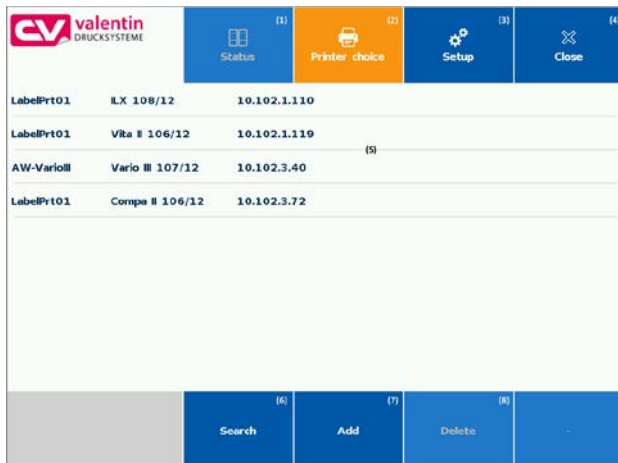
The transfer ribbon display serves for the estimation of the still existing transfer ribbon stock.

4.2 View: Direct Operation



The view **Direct operation** presents the complete user interface of the printer. You can make all available settings at the printer. You can load labels from a memory available in the printer and start print orders. During an active print, the label print is presented as print preview.

4.3 Menu: Printer Selection

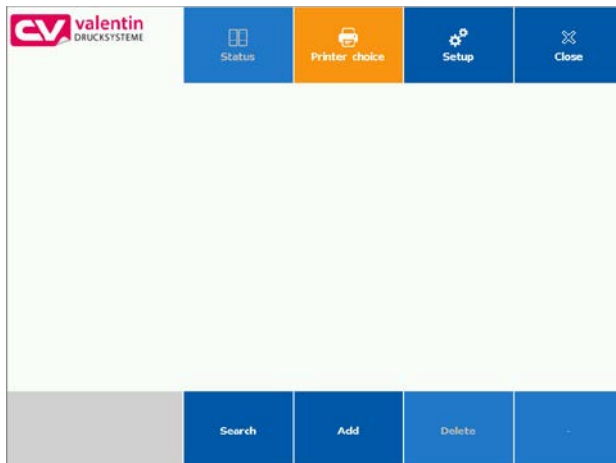


The image shows the start screen with an already defined printer list.

The function of the individual keys is described below.

- (1) **Button: Status**
Changes to status view for one or more selected printers.
- (2) **Button: Printer selection**
In the printer selection view, i.e. the currently presented view, you can make basic settings.
- (3) **Button: Settings**
Settings for the behaviour of the HMI App. Tap on **Settings** to specify the application language, network search mode, behaviour of **Close** button and other settings.
- (4) **Button: Close**
Closes the application. The visibility of the button can be configured in the settings.
- (5) **List: Available printers**
Tap on a printer to release it for the group status or an operating connection.
- (6) **Button: Search**
Starts an automatic search for available printers in the network.
- (7) **Button: Add**
Adds manually a printer to the list.
- (8) **Button: Delete**
Removes printer from the printer list.

4.4 Add Printer to the Printer List

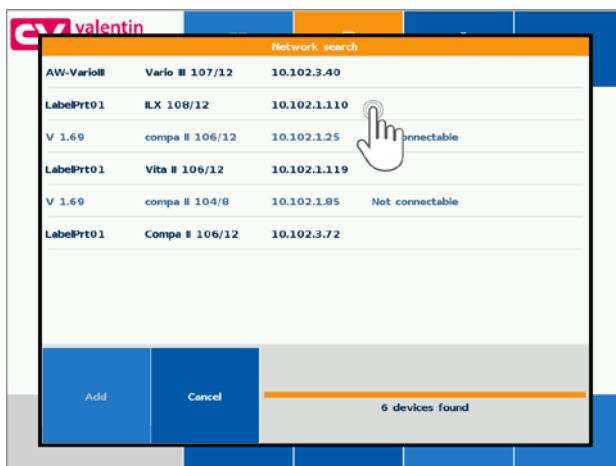


The application shows an empty printer list if no printer has been added before.

Tap on **Search** to search in the network for available printers.

Tap on **Add** to add a printer manually.

4.5 Network Search



After starting, the network search lists all available printers. The search mode can be specified in the Settings.

Tap on a desired printer to select and add it to the printer list.

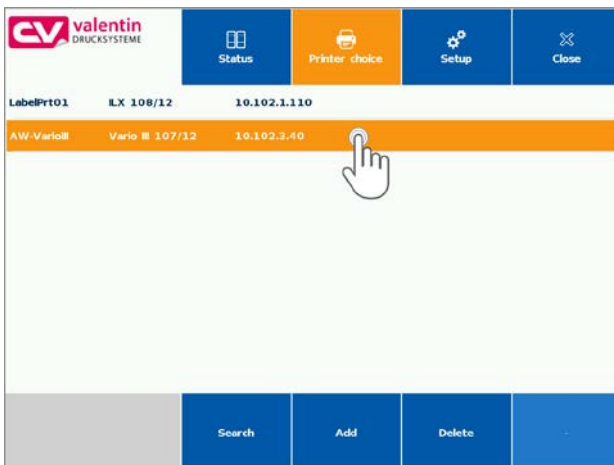
Tap on the added printer.



The selected printers can be added to the printer list.

Tap on **Cancel** to abort the procedure without printer selection.

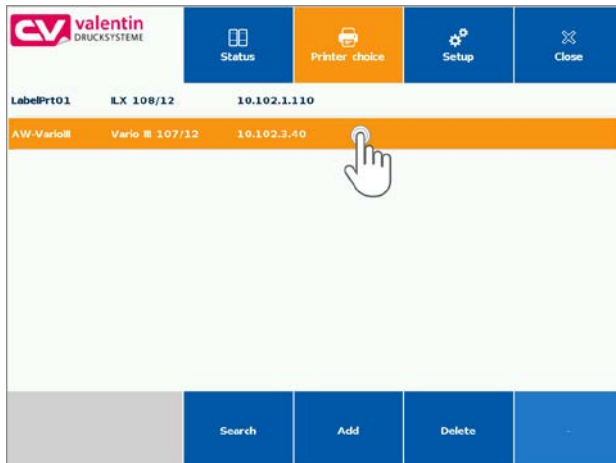
4.6 Printer List



In the defined printer list you can select one or several printers to monitor them in the group status.

In order to select these printers, tap on one or several printers. Tap on an already selected printer to deselect the printer.

4.7 Display Group Status



In the defined printer list you can select one or several (max 4) printers to monitor them in the group status.

Tap on one or several printers to select them. Tap on an already selected printer to deselect it again.



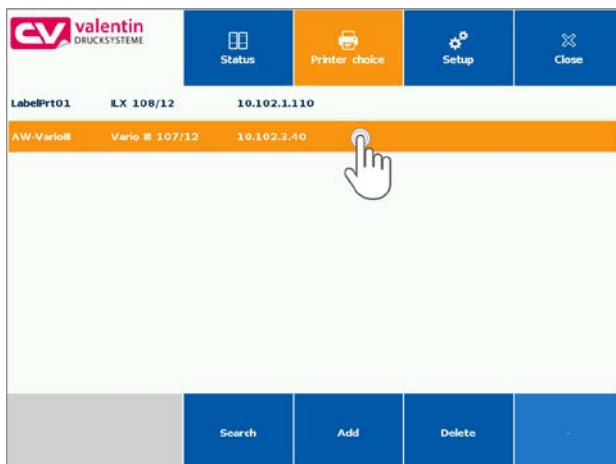
The illustration shows the view of group status.

The functions of the individual buttons and display elements are described.

- (1) **Button: Status**
In this view, the orange highlighted button. Shows the currently selected view.
- (2) **Button: Printer selection**
Change to printer selection view. Tap to printer selection to add new printers or to delete printers from the list.
- (3) **Button: Settings**
Setting of behaviour of HMI application.
- (4) **Button: Close**
The application can be terminated by pressing the button. In the settings, this button can be set to inactive (see chapter 4.10).
- (5) **Active display element: Printer**
Indication of printer type and the IP address. By tapping this display element, an operating connection with the printer can be established.

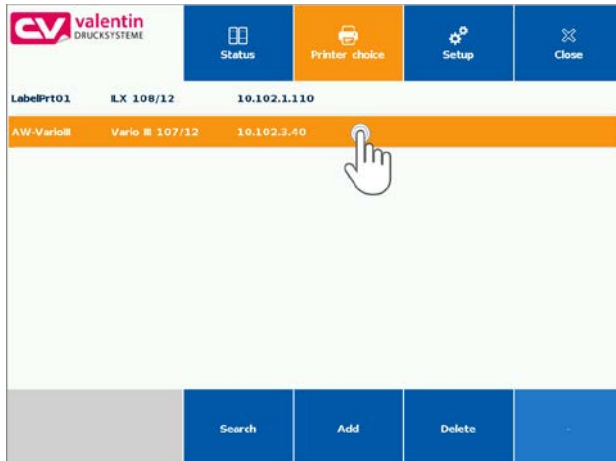
- (6) Active display element: **Transfer ribbon availability**
Presentation of the currently available transfer ribbon supply.
- (7) Active display element: **Print progress**
Indication of nominal quantity and number of printed labels for the current print order.
- (8) Active display element: **Connecting status**
Indicates the connecting status. In case of an existing connection, the indicator flashes.
- (9) Active display element: **Printer status**
Shows the current printer status in plain text.
(Idle, Printing, Waiting, etc.)

4.8 Operating Connection With Individual Printer



Tap to the display element **Printer** to establish a direct connection to a printer of printer status.

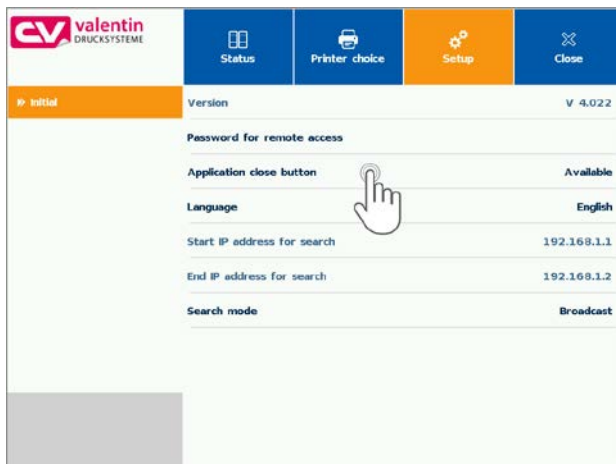
4.9 Direct Operation Connection



If a direct operation with the printer was established, all printer-specific settings can be set.

Tap on the display element **Printer** to return to the printer status.

4.10 Application Settings

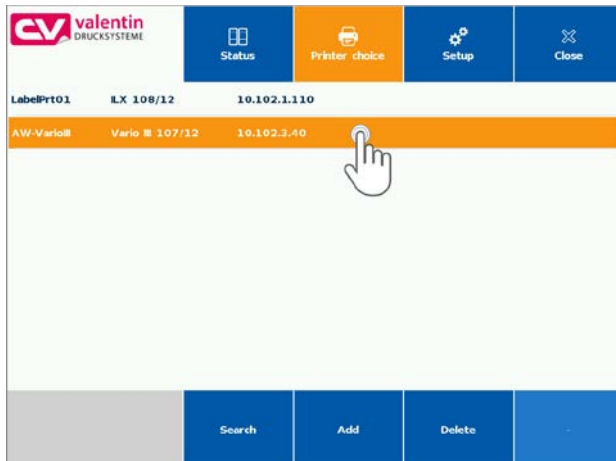


The display shows the screen in the settings menu.

Application-specific settings can be done in this menu.

Tap on the individual fields to change the setting.

Password for printer access

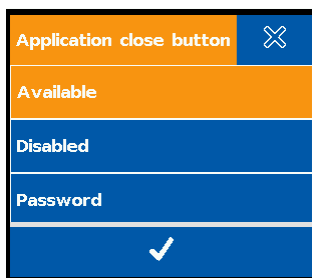


Tap on **Password for printer access** to specify and save the password.

You can add a password to your printer (see operating manual printer).

Only then, the HMI application can have access to the printer with the correct password.

Settings: Application close button



Tap the parameter **Application close button** to configure the behaviour of the button.

Available

The button is generally available. The application can be closed by pressing the button.

Disabled

The button is visible but not usable. An unintended closing of the application can be avoided.

Password

The use of the button can be protected with a password. If the button is tapped, first the correct password must be entered.

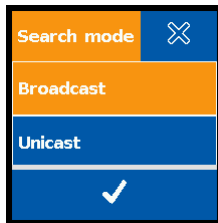
Settings: Language



Tap on **Language** to change the language of application. The language used in the printer is not changed.

In mode **Direct operation**, the language used in the printer is used for the display and can deviate from the application language.

Search mode



Tap on **Search mode** to configure the network search.

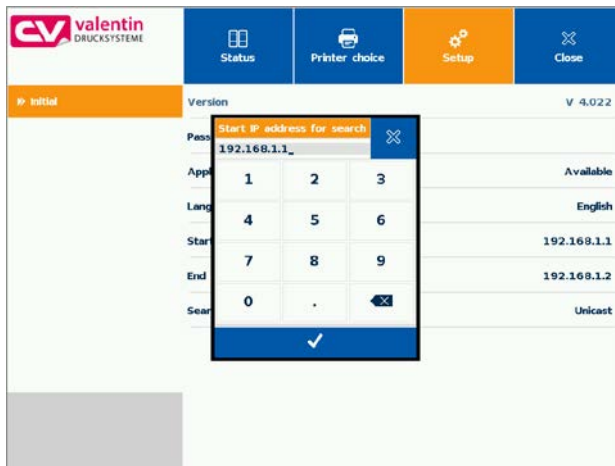
Broadcast

Starts a printer search in the local network

Unicast

Starts a printer search in the fixed address range. If Unicast is selected, start IP address and stop IP address can be specified.

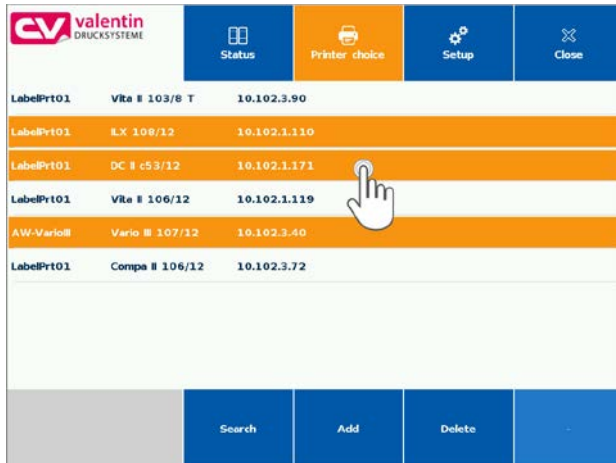
Start IP address / End IP address for search



The definition of a start and end address is only possible if the network mode search is set to Unicast.

Tap on a corresponding parameter to enter the appropriate IP address.

4.11 Delete Printer From The Printer List



You can delete individual or several printers from the printer list.

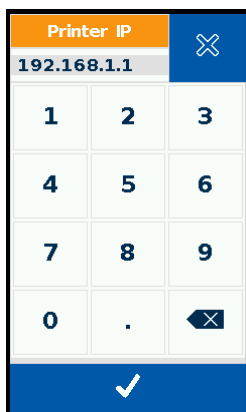
Select one or more printer and tap on **Delete**.



By confirming the dialog the printer is deleted from the list.

Tap on **X** to cancel the transaction.

4.12 Add Printer Manually

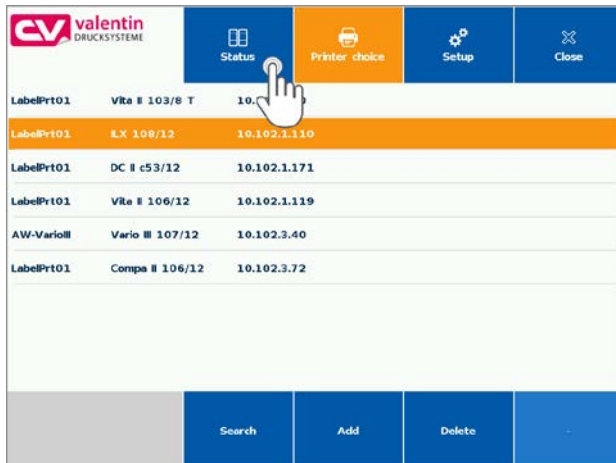


Printers can be added manually to the printer list.

Tap on **Add** to add new printers without network search.

In the dialog, enter the IP address of the added printer.

4.13 Establish Direct Connection To The Printer



A direct connection to the printer can be defined if only one printer is selected in the printer list. In this case the group status is not shown.

In the group list, select the printer which is to be operated directly, then press **Status**.

5 Configuration

The touch panel is delivered pre-configured so that normally no changes must be made..

The application on the touch panel is operated under the operating system Linux. Changes at the system are to be accomplished only by expert staff.

5.1 Update of HMI Application

Copy on a formatted USB stick (FAT32) the files provided from the manufacturer. The USB data medium should not have saved further files except the update files.

Necessary directory structure

USB drive:

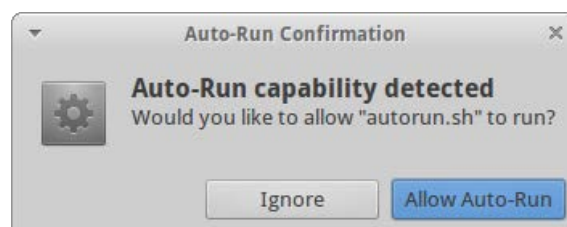
```

|----- .autorun.sh
|----- CVHMI
|
|----- .application.jar
|----- .frontPanel.jar
|----- .launch.sh
|----- .MicroEJStandaloneApplication.jar
|----- .properties.jar
|----- .runtime.jar

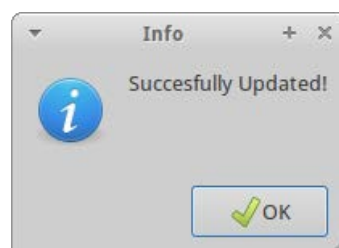
```

In order to run the update, switch on the touch panel and wait a moment until Linux has started. Insert the USB stick in a free USB slot at the touch panel (7, 8).

In this dialogue, confirm with button **Allow Auto-Run** to continue the update procedure.



After successful update, confirm with **OK**. The application will start automatically.



5.2 Standard Configuration

System password

user: cvadmin

password: cvadmin

Network configuration

The touch panel is preset for the network operation at a DHCP server at the factory.

Please contact your system administrator in case of questions concerning changes of network configuration. The settings depend on your network environment.

5.3 Access to Settings of Operating System

For settings at the operating system it is recommended to attach at the beginning a keyboard and a PC mouse at the USB port (not USB 3.0 blue). Inputs which must be effected during the configuration, are simply possible with attached keyboard.

Alternatively the onboard keyboard can be used.

Exit the application



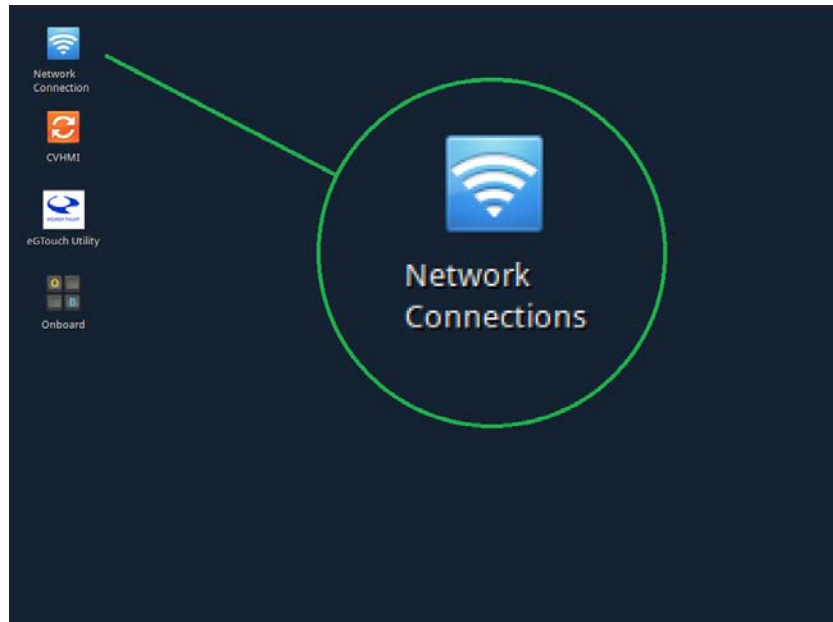
In order to get access to the operating system, the application must be terminated with the **Close** button.



NOTICE!

In case the button **Exit** is hidden or without function in the settings, first the button **Exit** must be activated again (see chapter 4.10).

5.4 Change the Network Settings

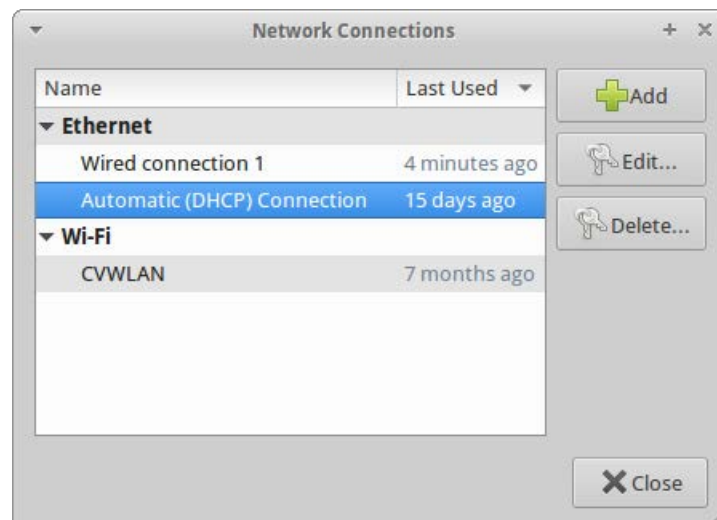


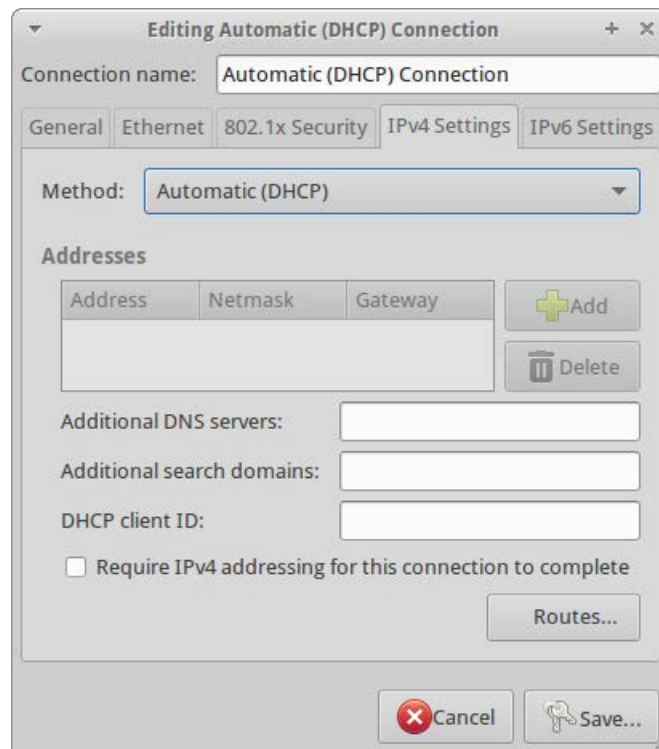
Click on the network symbol top left to change the network settings.

Cable connected LAN settings

In the network edit dialogue, the settings for the connection can be adapted.

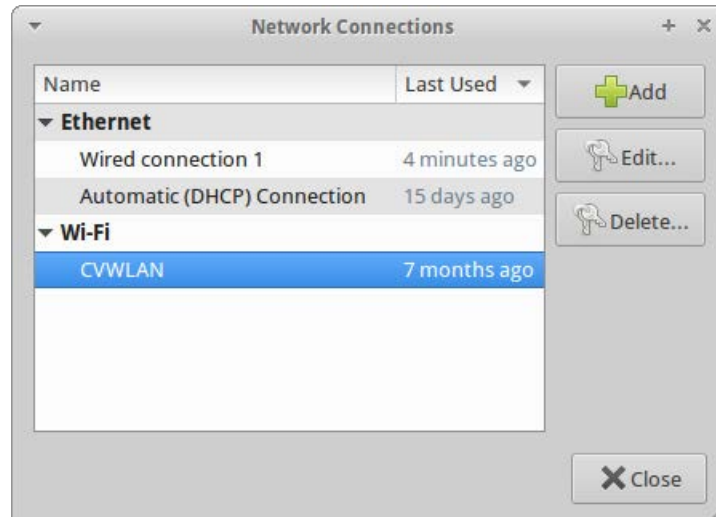
The settings depend on your network environment and should be enquired at the responsible administrator.





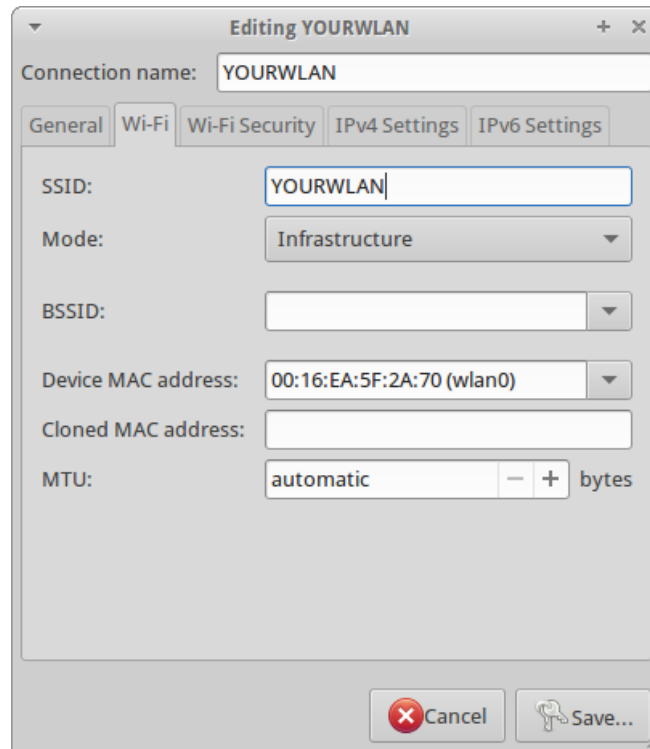
Wireless LAN (WLAN) settings

In the network edit dialogue, settings can be specified for the wireless connection.



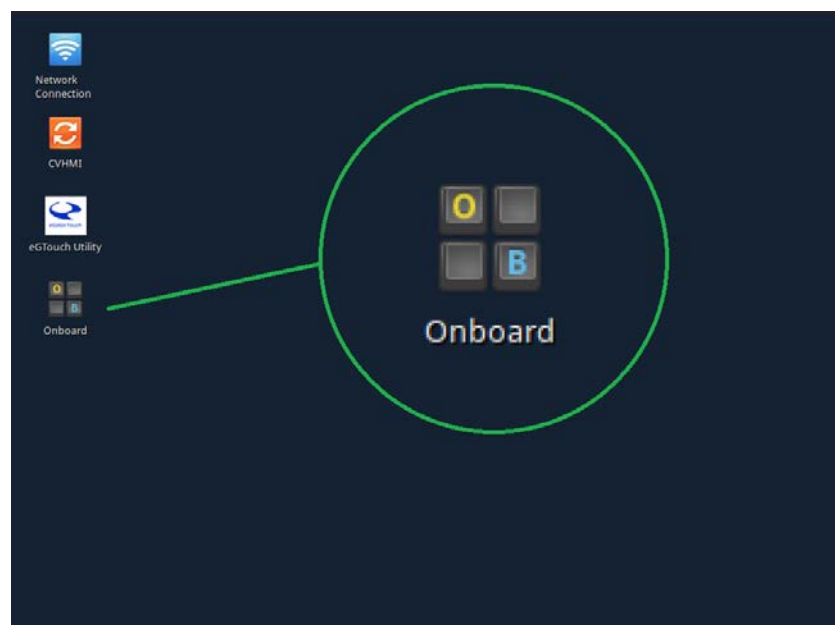
Please ensure that the antenna contained in the delivery was correctly screwed (2).


In the network configuration menu, further settings for the network connection can be accomplished (WLAN password).

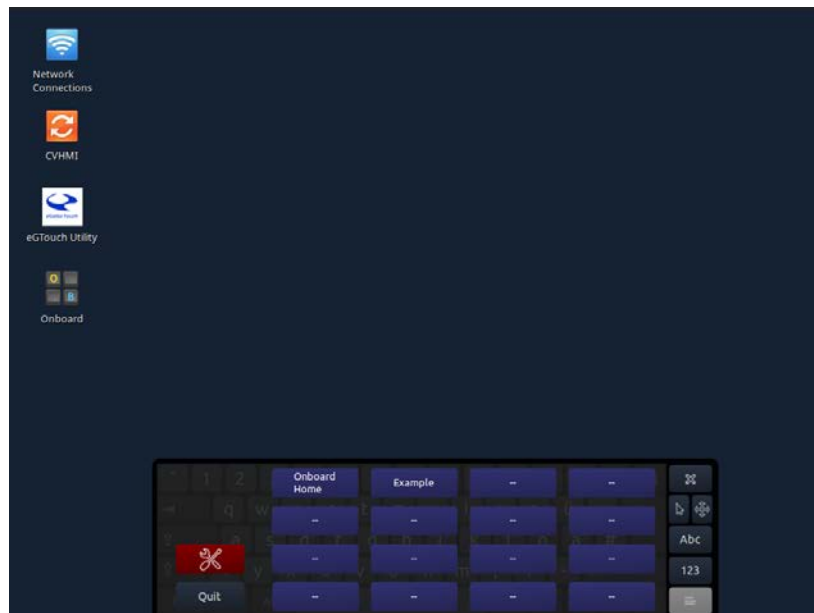


5.5 Onboard Keyboard

Alternatively to a keyboard attached to the USB port, also the onboard keyboard (software keyboard) can be used. For activating, click on the appropriate symbol.



For terminating, click on the symbol  bottom right.
 Tap on the **Quit** button to close the keyboard.

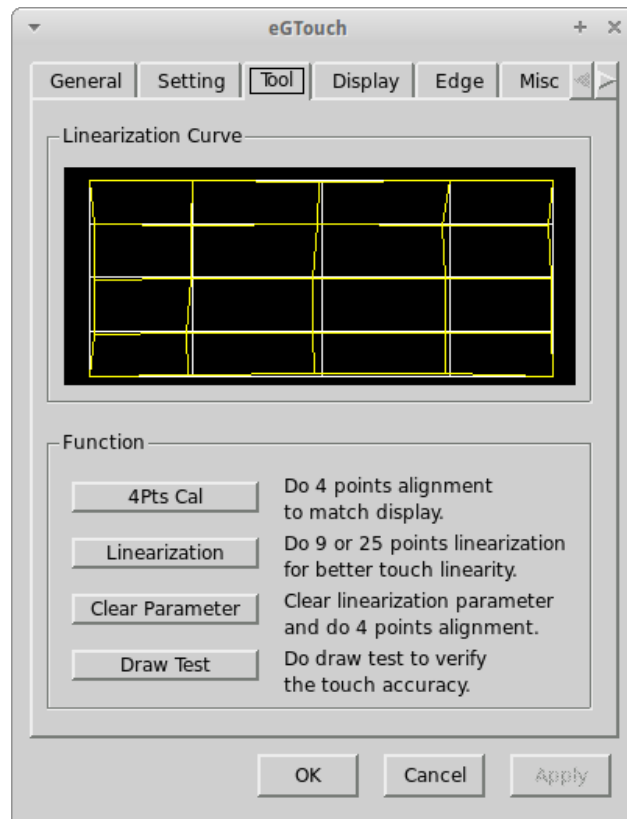


5.6 Touch Display Calibration

Click on the icon **egTouch Utility** to execute a new calibration of the touch panel.



In the menu item **Tool**, the calibration can be started by clicking the button **4Pts Cal.**



5.7 System Restart

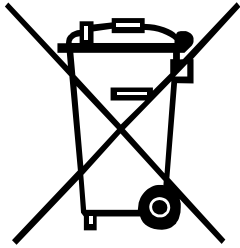
For starting the application, the touch panel must be restarted.

Tap on the On/Off switch at the touch panel for switching on and switching off.

The application can also be restarted by clicking on the application symbol without system restart.



6 Environmentally-Friendly Disposal



Manufacturers of B2B equipment are obliged to take back and dispose of old equipment that was manufactured after 13 August 2005. As a principle, this old equipment may not be delivered to communal collecting points. It may only be organised, used and disposed of by the manufacturer. Valentin products accordingly labelled can therefore be returned to Carl Valentin GmbH.

This way, you can be sure your old equipment will be disposed of correctly.

Carl Valentin GmbH thereby fulfils all obligations regarding timely disposal of old equipment and facilitates the smooth reselling of these products. Please understand that we can only take back equipment that is sent free of carriage charges.

Further information on the WEEE directive is available on our website www.carl-valentin.de.

7 Index

A	
Add printer	15
C	
Configuration	
Access to operating system.....	26
Network settings, change	27, 28, 29
Onboard keyboard	29, 30
Restart	31
Standard configuration.....	26
Touch display calibration	30, 31
Update	25
Connection	9
D	
Direct connection, establish	23
Direct operation	13
Direct operation connection	19
E	
Electrical parts, protection against touching.....	6
Environmentally-friendly disposal.....	31
G	
Group status	13, 17, 18
I	
Initial operation	7, 8
Installation	7
N	
Network search	15, 16
O	
Operating connection	18
Operation HMI	13
P	
Printer	
Add manually	22
Delete.....	22
Printer list.....	16
Printer selection.....	14
Product description.....	6
Q	
Quick start	11, 12

S

Safety instructions	5, 6
Scope of delivery	7
Settings.....	19
Application close button.....	20
IP start/end address.....	21
Language.....	20
Password printer access.....	20
Search mode	21



Carl Valentin GmbH
Neckarstraße 78 – 86 u. 94 . 78056 Villingen-Schwenningen
Phone +49 7720 9712-0 . Fax +49 7720 9712-9901
info@carl-valentin.de . www.carl-valentin.de