

ILX V

Interface Description



Edition: 02/26

Copyright

Copyright by Carl Valentin GmbH

Subject to modifications.

All rights, including those regarding the translation, are reserved.

No part of this document may be reproduced in any form (print, photocopy, or any other method) or edited, copied, or distributed electronically without written permission from Carl Valentin GmbH.

Trademarks

All named brands or trademarks are registered brands or registered trademarks of their respective owners and may not be separately labelled. It must not be concluded from the missing labelling that it is not a registered brand or a registered trademark.

Carl Valentin uses Free and Open Source Software within its products. For more information see www.carl-valentin.de/opensource.

Topicality

Information on the scope of delivery, appearance, performance, dimensions, and weight reflect our knowledge at the time of printing.

Due to constant further development of our products discrepancies between documentation and product can occur.

Please check www.carl-valentin.de for the latest update.

Terms and Conditions

Deliveries and services are effected under the General Conditions of Business of Carl Valentin GmbH

Licences

- CE Low-Voltage Directive (2014/35/EU)
- Electromagnetic Compatibility Directive (2014/30/EU)
- RoHS Directive (2011/65/EU)



Carl Valentin GmbH

Neckarstraße 78 – 86 u. 94
78056 Villingen-Schwenningen

Phone +49 7720 9712-0
E-Mail info@carl-valentin.de
Internet www.carl-valentin.de

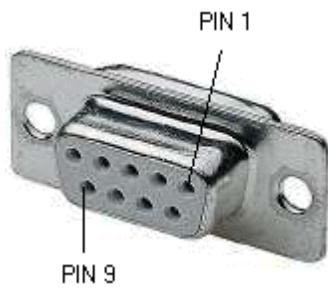
Table of Contents

1	Serial Data Transmission	5
1.1	Connector Assignment (9-pin DSUB Socket)	5
1.2	Connection Plan RS232	6
2	Text, Bar Code, Graphic	7
2.1	Definition of Rotation	7
2.2	Definition of Datum Point	7
3	Data Format	9
3.1	Explication	10
3.2	Definition of Field Attributes/Field Properties (optional)	11
3.3	Field Name	12
3.4	Field Selection by Free Definable Field Number	16
4	Mask Set	17
4.1	Text	17
4.2	One-Dimensional Bar Code	19
4.3	ITF Bar Code	20
4.4	PDF417	21
4.5	MAXICODE	22
4.6	DataMatrix	23
4.7	GS1 DataMatrix	24
4.8	CODABLOCK F	25
4.9	GS1 DataBar (RSS Code)	26
4.10	QR Code	27
4.11	Aztec Code	28
4.12	Rectangle	29
4.13	Line	29
4.14	Internal Graphic	30
5	Text Set	31
5.1	Examples	32
6	Graphic Set	33
6.1	General Graphic Format	33
6.2	Graphic in PCX-Format	33
6.3	Example PCX File	34
7	Variables	35
7.1	Set Structure	35
7.2	Link Field	35
7.3	Counter	36
7.4	Extended Counter	37
7.5	Date and Time	38
7.6	Format Identifier (Date & Time)	39
7.7	Currency Variable	42
7.8	Shift Variable	43
7.9	User Guiding	44
7.10	User Guiding with Mask	45
7.11	Memory Card Data	46
7.12	GS1-128 Parser	46
7.13	Check Digit	47
7.14	Substring	48

8	Parameter Sets	49
8.1	Label Parameters	49
8.2	Photocell	54
8.3	Printer Parameters	56
8.4	Dispenser I/O	61
8.5	Interface	67
8.6	Network	69
8.7	Offset Values	73
8.8	Service Functions	74
8.9	Date & Time	78
8.10	Password	80
8.11	Compact Flash Card	82
8.12	Printing	86
8.13	Emulation	89
9	Parameter Sets for Options	91
9.1	WLAN (Wireless Local Area Network)	91
9.2	Label Applicator	95
10	Configuration & Status	101
10.1	Autostatus	102
11	Monitored Printing	105
11.1	Short Introduction	105
11.2	Parameter Sets (Host – Printer)	105
11.3	Direct Enquiry	106
11.4	Answer Sets (Printer – Host)	106
11.5	Sample Label	108
12	Font Examples	109
12.1	Bitmap Fonts (Not Proportional)	109
12.2	Bitmap Fonts (Proportional)	109
12.3	Vector Fonts	109
13	Index	111

1 Serial Data Transmission

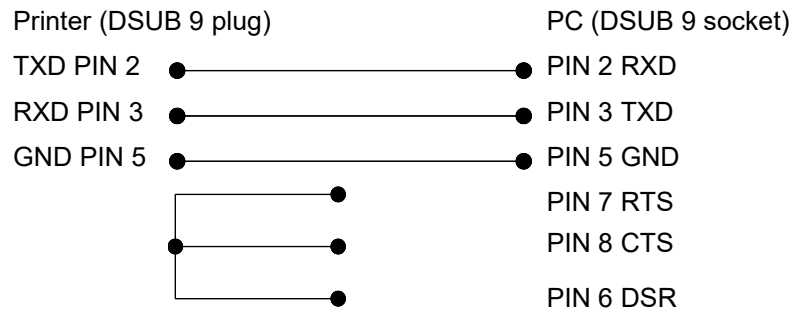
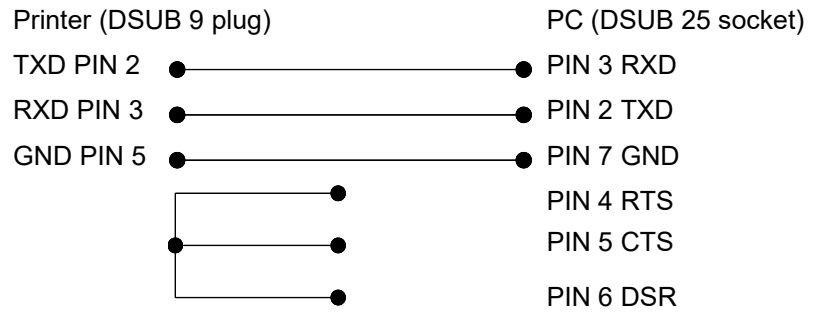
1.1 Connector Assignment (9-pin DSUB Socket)



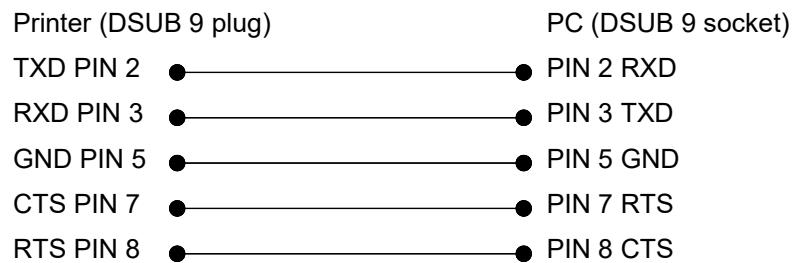
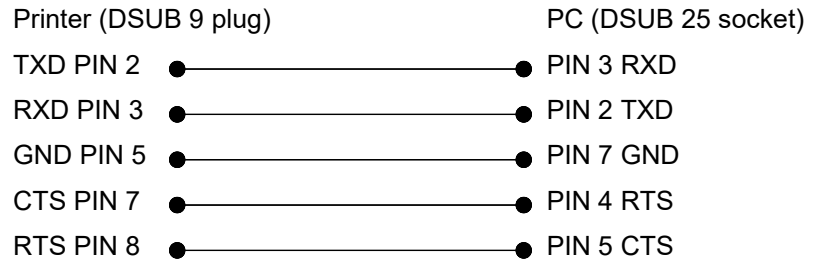
Pin	Signal	Description
2	T x D	Transmitting data line
3	R x D	Receiving data line
5	GND	GND signal
7	CTS	HW Handshake
8	RTS	HW Handshake

1.2 Connection Plan RS232

Software Handshake

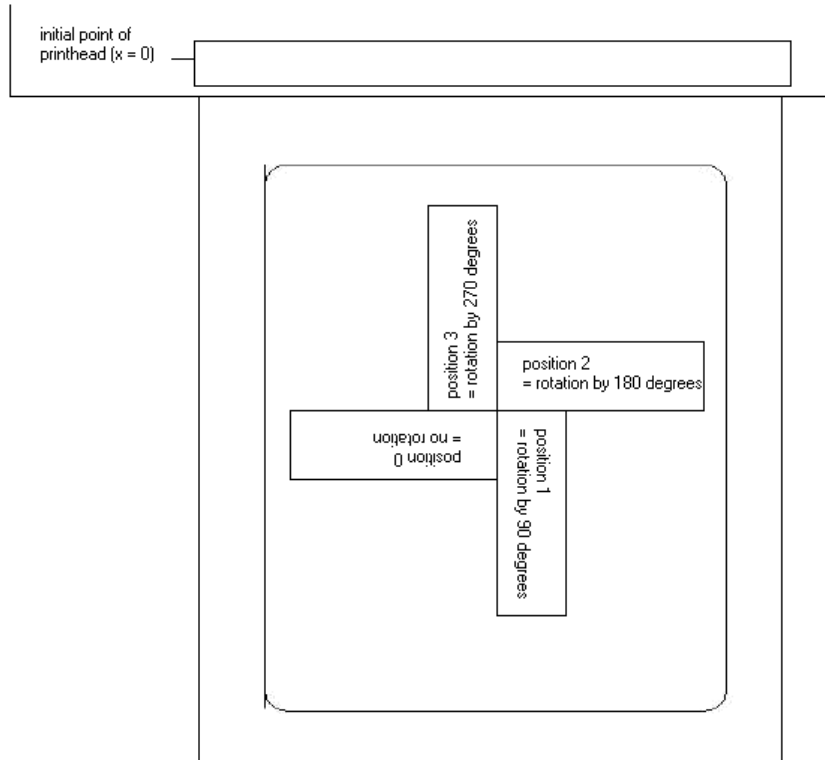


Hardware Handshake



2 Text, Bar Code, Graphic

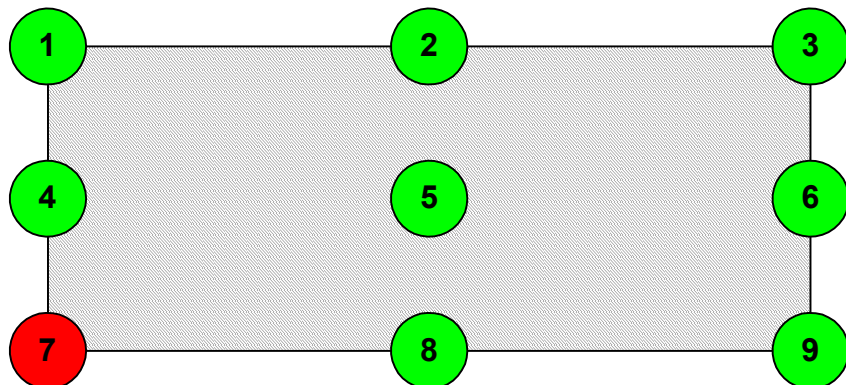
2.1 Definition of Rotation



2.2 Definition of Datum Point

The so-called datum point is the relation point for indication of position. In the meantime, the datum point is also the point at which the selected object is rotated.

To determine the datum point in the mask sets, the possible datum points are numbered from left top (1) to right bottom (9). The default datum point is left bottom (7). This datum point is also used even if no indication is found in the mask set.



3 Data Format

The data format consists of four parties:

- Mask set
 - Text
 - Graphic
 - Command
- For a n-line label the following must be transmitted:
 - n - mask sets
 - n - text sets
 - n - graphic sets (if necessary)
 - 1 - command set



NOTICE!

The command set must always be transmitted at the end!

To each text on a label belong one MASK SET and one TEXT SET with the same field number.

To each code on a label belong one MASK SET, one TEXT SET and one CODE SET with the same field number.

To each box or line on a label belongs only one MASK SET.

To each graphic on a label belong several GRAPHIC SETS according to its size res. height, e.g. a graphic with a height of 10 mm needs 80 graphic sets.

Examples

Label with 3 lines of text:	3 mask sets 3 text sets 1 command set
Label with 2 lines of text, 1 box and 3 lines	6 mask sets 2 text sets 1 command set

For ALL data sets the following is valid:

Each set starts with

SOH = start of header → HEX format 01

Each set ends with

ETB = end of data transmission block → HEX-Format 17

Alternatively, the start character SOH can be set to 5E_{Hex}, the end character ETB to 5F_{Hex}. This is necessary if the connected system (e.g. UNIX) cannot transfer control signs.

All other data sets → ASCII format, but they will be transmitted as hexadecimal characters.

Example

A = identification of mask set - transmission: 41_{HEX}

n = field number '01' - transmission: 30_{HEX}, 31_{HEX}

3.1 Explication

x coordinate: Distance from right label rim in mm
Measured from the right label rim up to the lower left point of the corresponding line.

y coordinate: Distance from upper label rim in mm
Measured from the beginning of the label down to the lower left point of the corresponding line.

**Bitmap fonts
(not proportional)**

01 = Font 01	0,8 x 1,1 mm	127 characters
02 = Font 02	1,2 x 1,7 mm	255 characters
03 = Font 03	1,8 x 2,6 mm	255 characters
04 = Font 04	4,0 x 5,6 mm	127 characters
05 = Font 05	1,8 x 3,2 mm (descender)	255 characters
06 = Font 06	1,5 x 2,9 mm	127 characters
07 = Font 07	1,2 x 2,2 mm (descender)	255 characters

**Bitmap fonts
(proportional)**

21 = Font 21	(1,0; 13)	255 characters
22 = Font 22	(1,8; 21)	255 characters
23 = Font 23	(2,6; 31)	255 characters
24 = Font 24	(5,6; 67)	255 characters
28 = Font 28	(4,0; 48)	255 characters
29 = Font 29	(0,8; 9)	255 characters



NOTICE!

To achieve best print results, it is recommended always to choose the biggest possible font.

**Vector fonts
(proportional)**

When in mode 'proportional text', the height and width of text must be entered in mm.
These values refer to the capital 'M', i.e. the values of other characters are changing in proportion.

**Vector fonts
(autoscale)**

When in autoscale mode, height and width of text must be entered in mm.
The height of the text refers to all capital letters. When using small characters and descenders the height is changing in proportion. When entering the width, the complete file must be considered. The text will be adjusted automatically, which means that the width of the characters is changing.

3.2 Definition of Field Attributes/Field Properties (optional)

Explanation

Additionally, to mask set 'AM[] ...' the possibility was created to define further field properties. To achieve high flexibility, the field properties received own names/identifications. Therefore, the sequence as well as the number of field properties is free. If necessary, the mask set 'AC[]' is transferred additionally to mask set 'AM[]' to the printer.

Structure mask set

(SOH)AC[]at1=*value*;at2= *value*;...(ETB)

Attribute (at):	Description
BT BW QZ	ITF 14 (see page 20) bearer bar type bearer bar width quiet zone in 1/100 mm
NAME	Field name (see page 12) definition of field name
FN	Field number (see page 16) Free definable field number

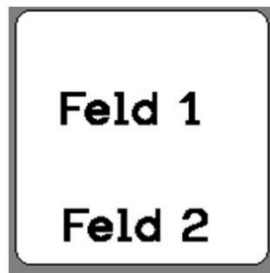
This table is constantly extended. The current version is available on demand.

3.3 Field Name

Application (customized)

When printing systems are connected to a computer system or machine controls, there is often the requirement that variable data is to be inserted into an existing layout. This data contents come from the superordinate computer system (database) or a machine control (e.g. PLC, scale, ERP system, etc.). It was always possible to integrate variable data into a 'loaded' layout (mask). The access to certain fields has been effected via the field index, i.e. a consecutive number. This field index is generated by Labelstar Office and can also change with layout changes, whereby the data allocation to the computer system/control is no longer correct.

Example



Print data

```
...
// TEXT (1/100 mm)
(SOH)AM[1]2405;803;0;1;2;4;1;1;0(ETB
)
(SOH)BM[1]Feld 1(ETB)
// TEXT (1/100 mm)
(SOH)AM[2]421;856;0;1;2;4;1;1;0(ETB)
(SOH)BM[2]Feld 2(ETB)
// LINES: 2
...
```

The print data contains the definitions for the two text fields. The field index is always in '[' of the mask or text setting.

If the text field 'Feld 1' is deleted on the label and then recreated, it gets a new index. In this case '2'. The text field 'Feld 2' gets the index '1'. As a result, an assignment via the field index is used only to a limited extend, without manual post-processing of the layout data.

Explanation

As an alternative to the field index, the assignment can also be made via the field name. A change in the field index no longer has any influence, and a changed layout is still filled in the right place with variable data of the computer/control system.

Labelstar Office: The print data is supplemented by the following line:

```
(SOH)AC[1]NAME="Field name"(ETB)
```

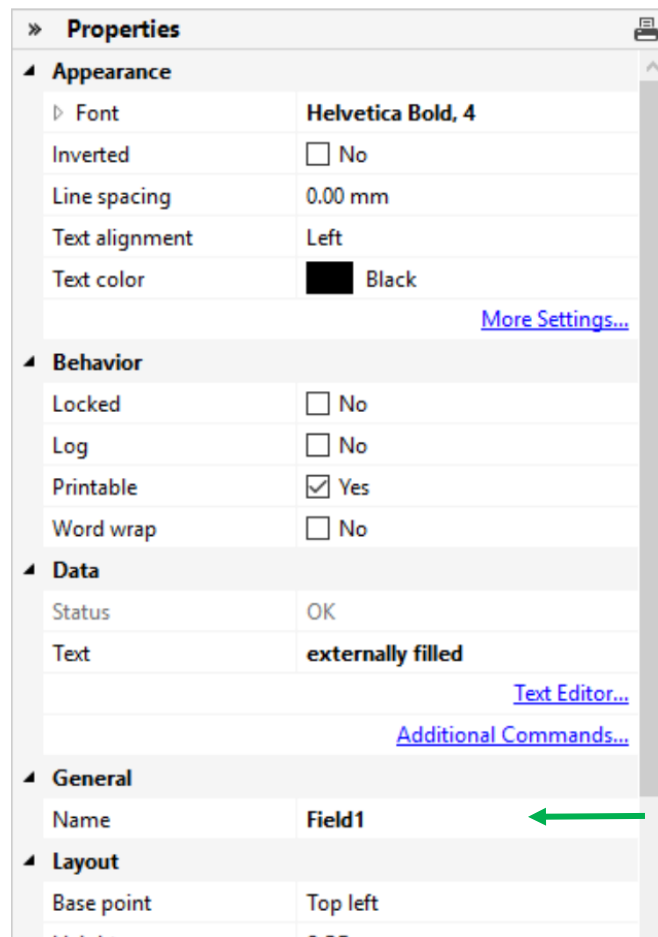
The field content defined via the text block can be changed by the computer system/control with the following command:

```
(SOH)BV[Field name]Feld 2(ETB)
```

This results in the following standard procedure for the connection to a high-level control and/or computer system.

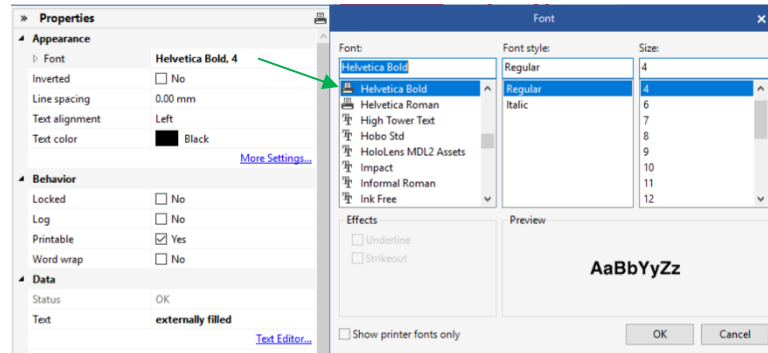
Label design with Labelstar Office

The field names are automatically transferred by Labelstar Office.



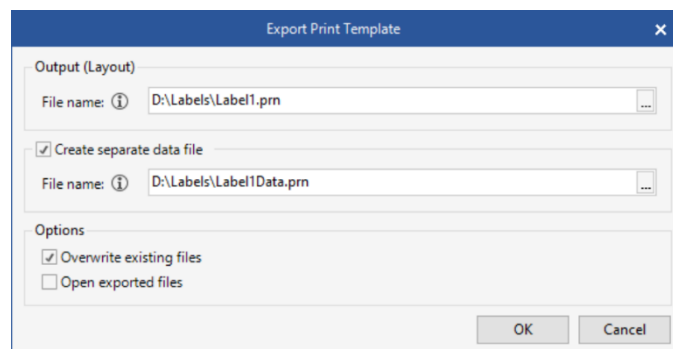
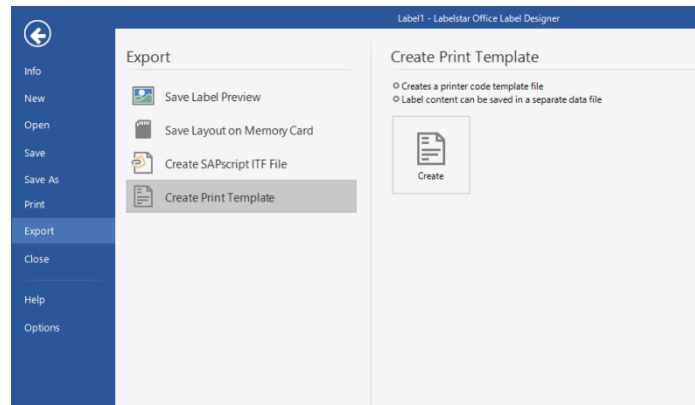
The desired field name (Field1) is entered in the properties of the text field.

For text fields, a printer-internal font must be used. The printer-internal fonts are marked by a printer symbol in the list.



Export to a print file and save the layout in the external controller

When the label design is finished, the label is exported to a print file. For this, Labelstar Office uses the function **File – Export – Create Print Template**.

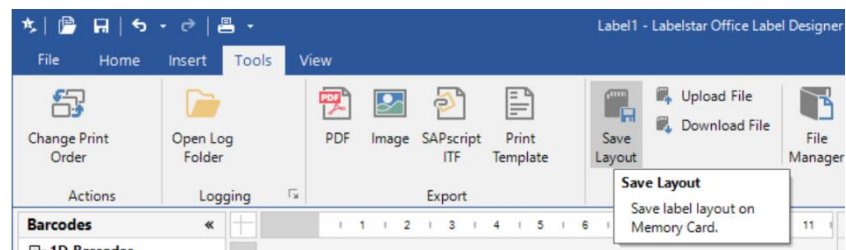


The option **Create separate data file** must be selected, otherwise the line (SOH)**FBC---r-----**(ETB) is included in the print file, which would immediately release a print procedure.

By starting a print procedure, this print file (layout definition / mask definition) is transferred from the controller/computer system to the printing system first.

Save the layout on the memory card of the printer

As an alternative to 'Export to a print file' the label layout is saved on the memory card of the printing system. For this, the memory card tool from Labelstar Office can be used.



The layout must be called by the controller/computer system **before** filling the variable fields.

The following parameter set is used:

(SOH)**FMA---*rfilename***(ETB)

The path name is determined when saving and contains a path.

Example: "A:\Standard\eti1".

Filling the variable fields by the controller/computer system

The higher-level control can select the variable fields by the field names and set the contents. Subsequently, the print job is restarted.

Example	(SOH)FMB--- <i>rfilename</i> (ETB)	Loading the layout from mc
	(SOH)BV[<i>ArtBez</i>]screws(ETB)	Filling the field "ArtBez" with "screws"
	(SOH)BV[<i>ArtNr</i>]123456789(ETB)	Filling the field "ArtNr" with "132456789"
	(SOH)FBC---r------(ETB)	Start printing

3.4 Field Selection by Free Definable Field Number

With the following described attribute, it is possible to assign a free definable field number to a field. This field number does not have to be clear, i.e. several fields can have the same field number. In this way the same field contents can be assigned to different fields.

The following attribute identification is defined:

Attribute: **FN**

Description: free definable field number

After the field number was assigned with AC mask statement,

```
(SOH) AC [n] FN=nr (ETB)
```

n = field index

nr = free definable field number

it is possible to access the field and/or the fields with the new BF text statement:

```
(SOH) BF [nr] text (ETB)
```

nr = field number

text = field contents

```
Example
// Assignment of field number field 1 and field 2
(SOH) AM[1]1000;2500;0;4;2;7;400;400;0 (ETB)
(SOH) AC [1] FN=100 (ETB)
(SOH) AM[2]2000;2500;0;30;2;4000;9;3;0;1 (ETB)
(SOH) AC [2] FN=100 (ETB)

// Access to field 1 and field 2 by field number
(SOH) BF [100]1234567890 (ETB)
```

4 Mask Set

4.1 Text

AM[n]y;x;p;a;d;z;dy;dx;lp;dp																			
A	identification for mask set																		
M	identification for protocol version																		
n	field number																		
y	Y coordinate in 1/100 mm																		
x	X coordinate in 1/100 mm																		
p	identification for phantom field 0 = print 1 = no print																		
a	identification for field type 1 = bitmap font 2 = bitmap font inverse 4 = vector font 5 = vector font autoscale 6 = vector font inverse 7 = vector font autoscale inverse																		
d	rotation 0 = 0° 2 = 180° 1 = 90° 3 = 270°																		
z	character set not proportional bitmap fonts (1+2)																		
	<table> <tr> <td>01 = FONT 01</td> <td>0,8 x 1,1 mm</td> <td>127 characters</td> </tr> <tr> <td>02 = FONT 02</td> <td>1,2 x 1,7 mm</td> <td>255 characters</td> </tr> <tr> <td>03 = FONT 03</td> <td>1,8 x 2,6 mm</td> <td>255 characters</td> </tr> <tr> <td>04 = FONT 04</td> <td>4,0 x 5,6 mm</td> <td>127 characters</td> </tr> <tr> <td>05 = FONT 05</td> <td>1,8 x 3,2 mm - descender</td> <td>255 characters</td> </tr> <tr> <td>07 = FONT 07</td> <td>1,2 x 2,2 mm - descender</td> <td>255 characters</td> </tr> </table>	01 = FONT 01	0,8 x 1,1 mm	127 characters	02 = FONT 02	1,2 x 1,7 mm	255 characters	03 = FONT 03	1,8 x 2,6 mm	255 characters	04 = FONT 04	4,0 x 5,6 mm	127 characters	05 = FONT 05	1,8 x 3,2 mm - descender	255 characters	07 = FONT 07	1,2 x 2,2 mm - descender	255 characters
	01 = FONT 01	0,8 x 1,1 mm	127 characters																
02 = FONT 02	1,2 x 1,7 mm	255 characters																	
03 = FONT 03	1,8 x 2,6 mm	255 characters																	
04 = FONT 04	4,0 x 5,6 mm	127 characters																	
05 = FONT 05	1,8 x 3,2 mm - descender	255 characters																	
07 = FONT 07	1,2 x 2,2 mm - descender	255 characters																	
character set proportional bitmap fonts (1+2)																			
<table> <tr> <td>21 = FONT 21</td> <td>1,0 mm; 13 Pixel</td> <td>255 characters</td> </tr> <tr> <td>22 = FONT 22</td> <td>1,8 mm; 21 Pixel</td> <td>255 characters</td> </tr> <tr> <td>23 = FONT 23</td> <td>2,6 mm; 31 Pixel</td> <td>255 characters</td> </tr> <tr> <td>24 = FONT 24</td> <td>5,6 mm; 67 Pixel</td> <td>255 characters</td> </tr> <tr> <td>28 = FONT 28</td> <td>4,0 mm; 48 Pixel</td> <td>255 characters</td> </tr> <tr> <td>29 = FONT 29</td> <td>0,8 mm; 9 Pixel</td> <td>255 characters</td> </tr> </table>	21 = FONT 21	1,0 mm; 13 Pixel	255 characters	22 = FONT 22	1,8 mm; 21 Pixel	255 characters	23 = FONT 23	2,6 mm; 31 Pixel	255 characters	24 = FONT 24	5,6 mm; 67 Pixel	255 characters	28 = FONT 28	4,0 mm; 48 Pixel	255 characters	29 = FONT 29	0,8 mm; 9 Pixel	255 characters	
21 = FONT 21	1,0 mm; 13 Pixel	255 characters																	
22 = FONT 22	1,8 mm; 21 Pixel	255 characters																	
23 = FONT 23	2,6 mm; 31 Pixel	255 characters																	
24 = FONT 24	5,6 mm; 67 Pixel	255 characters																	
28 = FONT 28	4,0 mm; 48 Pixel	255 characters																	
29 = FONT 29	0,8 mm; 9 Pixel	255 characters																	
character set vector fonts (4-7)																			
<table> <tr> <td>01 = Helvetica Bold</td> </tr> <tr> <td>02 = Helvetica Bold italics</td> </tr> <tr> <td>03 = Helvetica Roman</td> </tr> <tr> <td>04 = Helvetica Roman italics</td> </tr> <tr> <td>05 = Swiss Light</td> </tr> <tr> <td>06 = Swiss Light italics</td> </tr> <tr> <td>07 = Baskerville</td> </tr> <tr> <td>08 = Baskerville italics</td> </tr> <tr> <td>09 = Brush Script</td> </tr> <tr> <td>10 = Brush Script italics</td> </tr> <tr> <td>11 = Monospace</td> </tr> <tr> <td>12 = Monospace italics</td> </tr> <tr> <td>17 = OCR-A</td> </tr> <tr> <td>18 = OCR-A italics</td> </tr> <tr> <td>19 = OCR-B</td> </tr> <tr> <td>20 = OCR-B italics</td> </tr> </table>	01 = Helvetica Bold	02 = Helvetica Bold italics	03 = Helvetica Roman	04 = Helvetica Roman italics	05 = Swiss Light	06 = Swiss Light italics	07 = Baskerville	08 = Baskerville italics	09 = Brush Script	10 = Brush Script italics	11 = Monospace	12 = Monospace italics	17 = OCR-A	18 = OCR-A italics	19 = OCR-B	20 = OCR-B italics			
01 = Helvetica Bold																			
02 = Helvetica Bold italics																			
03 = Helvetica Roman																			
04 = Helvetica Roman italics																			
05 = Swiss Light																			
06 = Swiss Light italics																			
07 = Baskerville																			
08 = Baskerville italics																			
09 = Brush Script																			
10 = Brush Script italics																			
11 = Monospace																			
12 = Monospace italics																			
17 = OCR-A																			
18 = OCR-A italics																			
19 = OCR-B																			
20 = OCR-B italics																			

dy	extension in direction Y bitmap fonts vector fonts vector fonts autoscale	factor 0...9 character size in 1/100 mm field height
dx	extension in direction X bitmap fonts vector fonts vector fonts autoscale	factor 0-9 character size in 1/100 mm field width
lp	distance between single characters in 1/100 mm	
dp	datum point 1 = left top 2 = centre top 3 = right top 4 = left centre 5 = centre centre 6 = right centre 7 = left bottom (default) 8 = centre bottom 9 = right bottom	

4.4 PDF417

AM[n]y;x;p;a;d;s;rw;rh;ec;z;dp;c;r	
A	identification for mask set
M	identification for protocol version
n	Field number
y	Y position in 1/100 mm
x	X position in 1/100 mm
p	identification for phantom field 0 = print 1 = no print
a	identification for field type 50 = PDF417
d	rotation 0 = 0° 1 = 90° 2 = 180° 3 = 270°
s	symbol size
rw	relation width
rh	relation height
ec	error correction level 0 - ECC Level = 0 1 - ECC Level = 2 2 - ECC Level = 6 3 - ECC Level = 14 4 - ECC Level = 30 5 - ECC Level = 62 6 - ECC Level = 126 7 - ECC Level = 254 8 - ECC Level = 510
z	style 0 = standard 1 = truncated 2 = naked 3 = bare
dp	datum point 1 = left top 2 = centre top 3 = right top 4 = left centre 5 = centre centre 6 = right centre 7 = left bottom (default) 8 = centre bottom 9 = right bottom
c	number of columns 0 = automatic, 1-30
r	number of rows 0 = automatic, 3-90

4.5 MAXICODE

AM[n]y;x;p;a;d;0;sn;ns;m;0;dp	
A	identification for mask set
M	identification for protocol version
n	field number
y	Y position in 1/100 mm
x	X position in 1/100 mm
p	identification for phantom field 0 = print 1 = no print
a	identification for field type 51 = MAXICODE
d	rotation 0 = 0° 1 = 90° 2 = 180° 3 = 270°
0	dummy
sn	symbol number
ns	quantity of symbols
m	mode 2 = Structured Message (US Carrier) 3 = Structured Message (International Carrier) 4 = Default message
0	dummy
dp	datum point 1 = left top 2 = centre top 3 = right top 4 = left centre 5 = centre centre 6 = right centre 7 = left bottom (default) 8 = centre bottom 9 = right bottom

4.6 DataMatrix

AM[n]y;x;p;a;d;s;aw;ah;ec;f;dp																															
A	identification for mask set																														
M	identification for protocol version																														
n	field number																														
y	Y position in 1/100 mm																														
x	X position in 1/100 mm																														
p	identification for phantom field 0 = print 1 = no print																														
a	identification for field type 52 = DataMatrix																														
d	rotation 0 = 0° 1 = 90° 2 = 180° 3 = 270°																														
s	symbol size in 1/100 mm																														
aw	relation width																														
ah	relation height																														
ec	Error Correction <table border="0"> <tr> <td>0 - ECC Type = 0</td> <td>ECC Level = 0</td> <td>Overhead = 0 %</td> </tr> <tr> <td>1 - ECC Type = 2*</td> <td>ECC Level = 40</td> <td>Overhead = 33 %</td> </tr> <tr> <td>2 - ECC Type = 3</td> <td>ECC Level = 50</td> <td>Overhead = 25 %</td> </tr> <tr> <td>3 - ECC Type = 6</td> <td>ECC Level = 80</td> <td>Overhead = 33 %</td> </tr> <tr> <td>4 - ECC Type = 8</td> <td>ECC Level = 100</td> <td>Overhead = 50 %</td> </tr> <tr> <td>5 - ECC Type = 9*</td> <td>ECC Level = 110</td> <td>Overhead = 75 %</td> </tr> <tr> <td>6 - ECC Type = 10*</td> <td>ECC Level = 120</td> <td>Overhead = 50 %</td> </tr> <tr> <td>7 - ECC Type = 11*</td> <td>ECC Level = 130</td> <td>Overhead = 67 %</td> </tr> <tr> <td>8 - ECC Type = 12</td> <td>ECC Level = 140</td> <td>Overhead = 75 %</td> </tr> <tr> <td>9 - ECC Type = 26</td> <td>ECC Level = 200</td> <td>Overhead = 0 %</td> </tr> </table>	0 - ECC Type = 0	ECC Level = 0	Overhead = 0 %	1 - ECC Type = 2*	ECC Level = 40	Overhead = 33 %	2 - ECC Type = 3	ECC Level = 50	Overhead = 25 %	3 - ECC Type = 6	ECC Level = 80	Overhead = 33 %	4 - ECC Type = 8	ECC Level = 100	Overhead = 50 %	5 - ECC Type = 9*	ECC Level = 110	Overhead = 75 %	6 - ECC Type = 10*	ECC Level = 120	Overhead = 50 %	7 - ECC Type = 11*	ECC Level = 130	Overhead = 67 %	8 - ECC Type = 12	ECC Level = 140	Overhead = 75 %	9 - ECC Type = 26	ECC Level = 200	Overhead = 0 %
0 - ECC Type = 0	ECC Level = 0	Overhead = 0 %																													
1 - ECC Type = 2*	ECC Level = 40	Overhead = 33 %																													
2 - ECC Type = 3	ECC Level = 50	Overhead = 25 %																													
3 - ECC Type = 6	ECC Level = 80	Overhead = 33 %																													
4 - ECC Type = 8	ECC Level = 100	Overhead = 50 %																													
5 - ECC Type = 9*	ECC Level = 110	Overhead = 75 %																													
6 - ECC Type = 10*	ECC Level = 120	Overhead = 50 %																													
7 - ECC Type = 11*	ECC Level = 130	Overhead = 67 %																													
8 - ECC Type = 12	ECC Level = 140	Overhead = 75 %																													
9 - ECC Type = 26	ECC Level = 200	Overhead = 0 %																													
f	format ID of data 0 - Format ID = 11 (numeric, 2000 characters)* 1 - Format ID = 1 (numeric, 500 characters) 2 - Format ID = 2 (alphabetical, 500 characters) 3 - Format ID = 3 (alphabetical + pointers, 500 characters) 4 - Format ID = 4 (alphanumeric, 500 characters) 5 - Format ID = 5 (7 Bit, 500 characters) 6 - Format ID = 6 (8 Bit, 500 characters) 7 - Format ID = 7 (pre-programmed, 500 characters)* 8 - Format ID = 12 (alphabetical, 2000 characters) 9 - Format ID = 14 (alphanumeric, 2000 characters)																														
dp	datum point 1 = left top 2 = centre top 3 = right top 4 = left centre 5 = centre centre 6 = right centre 7 = left bottom (default) 8 = centre bottom 9 = right bottom																														

* not supported from printer

4.7 GS1 DataMatrix

AM[n]y;x;p;a;d;s;aw;ah;ec;f;dp																															
A	identification for mask set																														
M	identification for protocol version																														
n	field number																														
y	Y position in 1/100 mm																														
x	X position in 1/100 mm																														
p	identification for phantom field 0 = print 1 = no print																														
a	identification for field type 59 = GS1 DataMatrix																														
d	rotation 0 = 0° 1 = 90° 2 = 180° 3 = 270°																														
s	symbol size in 1/100 mm																														
aw	relation width																														
ah	relation height																														
ec	Error Correction <table border="0"> <tr> <td>0 - ECC Type = 0</td> <td>ECC Level = 0</td> <td>Overhead = 0 %</td> </tr> <tr> <td>1 - ECC Type = 2*</td> <td>ECC Level = 40</td> <td>Overhead = 33 %</td> </tr> <tr> <td>2 - ECC Type = 3</td> <td>ECC Level = 50</td> <td>Overhead = 25 %</td> </tr> <tr> <td>3 - ECC Type = 6</td> <td>ECC Level = 80</td> <td>Overhead = 33 %</td> </tr> <tr> <td>4 - ECC Type = 8</td> <td>ECC Level = 100</td> <td>Overhead = 50 %</td> </tr> <tr> <td>5 - ECC Type = 9*</td> <td>ECC Level = 110</td> <td>Overhead = 75 %</td> </tr> <tr> <td>6 - ECC Type = 10*</td> <td>ECC Level = 120</td> <td>Overhead = 50 %</td> </tr> <tr> <td>7 - ECC Type = 11*</td> <td>ECC Level = 130</td> <td>Overhead = 67 %</td> </tr> <tr> <td>8 - ECC Type = 12</td> <td>ECC Level = 140</td> <td>Overhead = 75 %</td> </tr> <tr> <td>9 - ECC Type = 26</td> <td>ECC Level = 200</td> <td>Overhead = 0 %</td> </tr> </table>	0 - ECC Type = 0	ECC Level = 0	Overhead = 0 %	1 - ECC Type = 2*	ECC Level = 40	Overhead = 33 %	2 - ECC Type = 3	ECC Level = 50	Overhead = 25 %	3 - ECC Type = 6	ECC Level = 80	Overhead = 33 %	4 - ECC Type = 8	ECC Level = 100	Overhead = 50 %	5 - ECC Type = 9*	ECC Level = 110	Overhead = 75 %	6 - ECC Type = 10*	ECC Level = 120	Overhead = 50 %	7 - ECC Type = 11*	ECC Level = 130	Overhead = 67 %	8 - ECC Type = 12	ECC Level = 140	Overhead = 75 %	9 - ECC Type = 26	ECC Level = 200	Overhead = 0 %
0 - ECC Type = 0	ECC Level = 0	Overhead = 0 %																													
1 - ECC Type = 2*	ECC Level = 40	Overhead = 33 %																													
2 - ECC Type = 3	ECC Level = 50	Overhead = 25 %																													
3 - ECC Type = 6	ECC Level = 80	Overhead = 33 %																													
4 - ECC Type = 8	ECC Level = 100	Overhead = 50 %																													
5 - ECC Type = 9*	ECC Level = 110	Overhead = 75 %																													
6 - ECC Type = 10*	ECC Level = 120	Overhead = 50 %																													
7 - ECC Type = 11*	ECC Level = 130	Overhead = 67 %																													
8 - ECC Type = 12	ECC Level = 140	Overhead = 75 %																													
9 - ECC Type = 26	ECC Level = 200	Overhead = 0 %																													
f	format ID of data 0 - Format ID = 11 (numeric, 2000 characters)* 1 - Format ID = 1 (numeric, 500 characters) 2 - Format ID = 2 (alphabetical, 500 characters) 3 - Format ID = 3 (alphabetical + pointers, 500 characters) 4 - Format ID = 4 (alphanumeric, 500 characters) 5 - Format ID = 5 (7 Bit, 500 characters) 6 - Format ID = 6 (8 Bit, 500 characters) 7 - Format ID = 7 (pre-programmed, 500 characters)* 8 - Format ID = 12 (alphabetical, 2000 characters) 9 - Format ID = 14 (alphanumeric, 2000 characters)																														
dp	datum point 1 = left top 2 = centre top 3 = right top 4 = left centre 5 = centre centre 6 = right centre 7 = left bottom (default) 8 = centre bottom 9 = right bottom																														

* not supported from printer

4.8 CODABLOCK F

AM[n]y;x;p;a;d;h;nc;nl;m;s;dp	
A	identification for mask set
M	identification for protocol version
n	field number
y	Y position in 1/100 mm
x	X position in 1/100 mm
p	identification for phantom field 0 = printout 1 = np printout
a	identification for field type 53 = CODABLOCK F
d	rotation 0 = 0° 1 = 90° 2 = 180° 3 = 270°
h	line height in symbol
nc	quantity of characters/line
nl	quantity of lines
m	mode
s	module size
dp	datum point 1 = left top 2 = centre top 3 = right top 4 = left centre 5 = centre centre 6 = right centre 7 = left bottom (default) 8 = centre bottom 9 = right bottom

4.9 GS1 DataBar (RSS Code)

AM[n]y;x;p;a;d;s;m;k;t;0;dp	
A	identification for mask set
M	identification for protocol version
n	field number
y	Y position in 1/100 mm
x	X position in 1/100 mm
p	identification for phantom field 0 = print 1 = no print
a	identification for field type 54 = GS1 DataBar (RSS)
d	rotation 0 = 0° 1 = 90° 2 = 180° 3 = 270°
s	number of segments per line [2...22]
m	module width [1 ...12]
k	separator height [1,2]
t	symbol type 1 = GS1 DataBar Omnidirectional (RSS-14) 2 = GS1 DataBar Truncated (RSS-14 Truncated) 3 = GS1 DataBar Stacked (RSS-14 Stacked) 4 = GS1 DataBar Stacked Omnidirectional (RSS-14 Stacked Omnidirectional) 5 = GS1 DataBar Limited (RSS Limited) 6 = GS1 DataBar Expanded (RSS Expanded)
0	not used
dp	datum point 1 = left top 2 = centre top 3 = right top 4 = left centre 5 = centre centre 6 = right centre 7 = left bottom (default) 8 = centre bottom 9 = right bottom

4.10 QR Code

AM[n];x;p;a;d;mo;cs;ms;cw;ec;dp	
A	identification for mask set
M	identification for protocol version
n	field number
y	Y position in 1/100 mm
x	X position in 1/100 mm
p	identification for phantom field 0 = print 1 = no print
a	identification for field type 57 = QR Code
d	rotation 0 = 0° 1 = 90° 2 = 180° 3 = 270°
mo	code model 1 = Code Model 1 2 = Code Model 2
cs	character set N = numeric A = alphanumeric B = 8-bit byte K = kanji
ms	masking -1 = auto 0-7 = mask x 8 = no masking
cw	line width in 1/100 mm per module possible values: 0-800
ec	error correction (restoring capacity) L = 7 % M = 15 % Q = 25 % H = 30 %
dp	datum point 1 = left top 2 = centre top 3 = right top 4 = left centre 5 = centre centre 6 = right centre 7 = left bottom (default) 8 = centre bottom 9 = right bottom

4.11 Aztec Code

AM[n]y;x;p;a;d;h;f;ec;m;0;dp	
A	identification for mask set
M	identification for protocol version
n	field number
y	Y position in 1/100 mm
x	X position in 1/100 mm
p	identification for phantom field 0 = print 1 = no print
a	identification for field type 61 = Aztec Code
d	rotation 0 = 0° 1 = 90° 2 = 180° 3 = 270°
h	symbol size in 1/100 mm (max 1 cm)
f	format 0 = Auto 1 = C15xC15 Compact 2 = C19xC19 Compact 3 = C23xC23 Compact 4 = C27xC27 Compact 5 = C19xC19 6 = C23xC23 7 = C27xC27 8 = C31xC31 9 = C37xC37 10 = C41xC41 11 = C45xC45 12 = C49xC49 13 = C53xC53 14 = C57xC57 15 = C61xC61 16 = C67xC67 17 = C71xC71 18 = C75xC75 19 = C79xC79 20 = C83xC83 21 = C87xC87 22 = C91xC91 23 = C95xC95 24 = C101xC101 25 = C105xC105 26 = C109xC109 27 = C113xC113 28 = C117xC117 29 = C121xC121 30 = C125xC125 31 = C131xC131 32 = C135xC135 33 = C139xC139 34 = C143xC143 35 = C147xC147 36 = C151xC151
ec	error correction (only if format = 0) 1 = 10 % 2 = 23 % 3 = 36 % 4 = 50 %
m	mode 0 = data 1 = runes (figures 0-255) 2 = Unicode (8 Bit ASCII) 3 = GS1 (not yet available)
0	dummy
dp	datum point 1 = left top 2 = centre top 3 = right top 4 = left centre 5 = centre centre 6 = right centre 7 = left bottom (default) 8 = centre bottom 9 = right bottom

4.12 Rectangle

AM[n]y;x;p;a;h;b;s;m;dp	
A	identification for mask set
M	identification for protocol version
n	field number
y	Y position in 1/100 mm
x	X position in 1/100 mm
p	identification for phantom field 0 = print 1 = no print
a	identification for field type 10 = rectangle
h	rectangle height in 1/100 mm
b	rectangle height in 1/100 mm
s	line width in 1/100 mm
m	line type; 1 digit
dp	datum point 1 = left top 2 = centre top 3 = right top 4 = left centre 5 = centre centre 6 = right centre 7 = left bottom (default) 8 = centre bottom 9 = right bottom

4.13 Line

AM[n]y;x;p;a;d;l;s;m;dp	
A	identification for mask set
M	identification for protocol version
n	field number
y	Y position in 1/100 mm
x	X position in 1/100 mm
p	identification for phantom field 0 = printout 1 = no printout
a	identification for field type 11 = line
d	rotation 0 = horizontal 1 = vertical
l	length in 1/100 mm
s	line width in 1/100 mm
m	line type; 1 digit
dp	datum point 1 = left top 2 = centre top 3 = right top 4 = left centre 5 = centre centre 6 = right centre 7 = left bottom (default) 8 = centre bottom 9 = right bottom

4.14 Internal Graphic

AM[n]y;x;p;a;d;dy;dx;dp	
A	identification for mask set
M	identification for protocol version
n	field number
y	Y position in 1/100 mm
x	X position in 1/100 mm
P	identification for phantom field 0 = print 1 = no print
a	identification for field type 3 = internal graphic
d	rotation 0 = 0° 1 = 90° 2 = 180° 3 = 270°
dy	rotation in direction Y
dx	rotation in direction X
dp	datum point 1 = left top 2 = centre top 3 = right top 4 = left centre 5 = centre centre 6 = right centre 7 = left bottom (default) 8 = centre bottom 9 = right bottom

5 Text Set

BM[n]text	
B	identification for text set
M	identification for extended protocol
n	field number
text	data contents, text

BV[n]text	
B	identification for text set
V	identification for selection by field name
n	field name
text	data contents, text

BF[n]text	
B	identification for text set
F	identification for selection by free definable field number
n	field number
text	data contents, text

5.1 Examples

Mask set

Mask statement	[SOH]AM[1]2000;4000;0;1;0;2;1;1;0[ETB]
field number	_____
y position 20 mm	_____
x position 40 mm	_____
no phantom field	_____
bitmap font	_____
position 0	_____
font 2	_____
extension in y direction 1	_____
extension in x direction 1	_____
no blank pixel	_____

Texts set

Text statement	[SOH]BM[1]this is a test [ETB]
field number 1	_____
text "this is a test"	_____

Text set with variable definition:

[SOH]BM[125]=CN(0,0,3,1,1)000[ETB]

Example label

ASCII data	Identification
⊗AM[1]3600;4600;0;33;0;1500;0;4;1;1⊕ ^{C_R} ⊕ ^{L_F}	mask set for bar code
⊗BM[1]4444444444444⊕ ^{C_R} ⊕ ^{L_F}	appropriate text set
⊗AM[2]600;4700;0;4;0;1;300;200;24⊕ ^{C_R} ⊕ ^{L_F}	five mask sets vector font / proportional font
⊗AM[3]600;3100;0;4;0;1;400;300;24⊕ ^{C_R} ⊕ ^{L_F}	
⊗AM[4]1100;4700;0;4;0;1;400;300;24⊕ ^{C_R} ⊕ ^{L_F}	
⊗AM[5]1800;4700;0;4;0;1;300;200;24⊕ ^{C_R} ⊕ ^{L_F}	
⊗AM[6]1900;3700;0;4;0;1;600;400;24⊕ ^{C_R} ⊕ ^{L_F}	
⊗BM[2]Art.Nr. ⊕ ^{C_R} ⊕ ^{L_F}	five appropriate text sets
⊗BM[3]44444⊕ ^{C_R} ⊕ ^{L_F}	
⊗BM[4]Artikelbezeichnung⊕ ^{C_R} ⊕ ^{L_F}	
⊗BM[5]EUR⊕ ^{C_R} ⊕ ^{L_F}	
⊗BM[6]99,-- ⊕ ^{C_R} ⊕ ^{L_F}	
⊗FBA000r06000000⊕	number of lines
⊗FBBA00r00001000⊕	number of items
⊗FBC000r00000000⊕	start

: graphic data in PCX format

⊗: SOH (1_{hex} bzw 5E_{hex})

⊕: ETB (17_{hex} bzw. 5F_{hex})

^{C_R}: CarriageReturn (0D_{hex})

^{L_F}: LineFeed (0A_{hex})

- It is recommended to observe that directly after the final sign (ETB) no separator res. fill character such as $C_R L_F$ is indicated.
- The printer supports the following PCX versions: 5, 3, 2 and 0.
- It is necessary that the corresponding PCX-file is available as monochrome (black/white).
- The graphic must be available in the original size as the printer is not able to change the size itself.

**NOTICE!**

Before print starts, indicated by parameter set 'FBC', the definition of field number, lines and pieces must be effected via the parameter sets (FBA res. FBB).

6.3 Example PCX File

-*** PCX_GRAPHIC-INFO ***-

⊗AX0010015300100941⊕#####	
⊗AM[1]3600;4600;0;33;0;1500;0;4;1;1⊕ $C_R L_F$	mask set for bar code
⊗BM[1]444444444444⊕ $C_R L_F$	appropriate text set
⊗AM[2]600;4700;0;4;0;1;300;200;24⊕ $C_R L_F$ ⊗AM[3]600;3100;0;4;0;1;400;300;24⊕ $C_R L_F$ ⊗AM[4]1100;4700;0;4;0;1;400;300;24⊕ $C_R L_F$ ⊗AM[5]1800;4700;0;4;0;1;300;200;24⊕ $C_R L_F$ ⊗AM[6]1900;3700;0;4;0;1;600;400;24⊕ $C_R L_F$	five mask set vector font / proportional font
⊗BM[2]Art.Nr. ⊕ $C_R L_F$ ⊗BM[3]444444⊕ $C_R L_F$ ⊗BM[4]Artikelbezeichnung⊕ $C_R L_F$ ⊗BM[5]EUR⊕ $C_R L_F$ ⊗BM[6]99,-- ⊕ $C_R L_F$	five appropriate text sets
⊗FBA00r06000000⊕	set number of lines (FBA...)
⊗FBBA00r00001000⊕	set quantity (FBBA...)
⊗FBC000r00000000⊕	start print order (FBC...)

: Grafikdaten im PCX Format
⊗: SOH (1_{hex} bzw 5E_{hex})
⊕: ETB (17_{hex} bzw. 5F_{hex})
 C_R : CarrigeReturn (0D_{hex})
 L_F : LineFeed (0A_{hex})

7 Variables

7.1 Set Structure

SOH	BM	[n]	=	v	v	(p1	p2	p...	pn)	t1	t2	t...	t70	ETB
-----	----	-----	---	---	---	---	----	----	------	----	---	----	----	------	-----	-----

= start of function
 vv variable type
 SC link field
 CN counter
 CC extended counter
 CL date/time
 CU currency variable
 SH shift variable
 MD memory card data
 (start of variable parameter block
 p1...pn variable parameter
) end of variable parameter block



NOTICE!

In case you want to print a text, which corresponds exactly to the variable definition then you must place '!' before.

SOH	BM	[n]	!	=	v	v	(p1	p2	p...	pn)	t1	t2	t...	t70	ETB
-----	----	-----	---	---	---	---	---	----	----	------	----	---	----	----	------	-----	-----

7.2 Link Field

SOH	BM	[n]	=	S	C	(p1	;	p2	;	p...	;	pn)	t1	t2	t...	t70	ETB
-----	----	-----	---	---	---	---	----	---	----	---	------	---	----	---	----	----	------	-----	-----

=SC identification of link field
 p1...pn identification of link elements (field number or constant text)
 field number is entered without leading '0'
 constant text is included in " but these marks are not printed



NOTICE!

Reference fields can be constant text or variables but no link fields.

Example

=SC(1;2;3) --> Printout: Field1Field2Field3

=SC(1;"constant";2) --> Printout: Field1constantField2

7.3 Counter

```
SOH BM [n] = C N ( t ; m ; c ; +/- s ; i ; h ; r ) t1 t2 t... t70 ETB
```

= CN	identification counter
t	type of counter
0	numerical
1	letters only
2...36	radix, base of the counter
m	function mode
0	standard
1	return to start value
2	enter the start value at the beginning of printing (default = existing start value)
3	enter the start value at the beginning of printing (default = last final number)
4	reset start value at cycle end (only for DPM IIIi)
5	reset start value by I/O signal
6	time-controlled resetting
7	time-controlled resetting with input of initial value (default = last final value)
c	digit where the numbering starts counting
+/-	direction
+	adding
-	subtracting
s	step width
i	update interval (number of labels with identical number)
h	time by which the counter is reset (function mode 6 and 7) in format 'HH:MM' e.g. 00:00 = reset counter at 0:00 (optional, only for function mode 6 and 7)
r	reset value (optional, only for function mode 6 and 7; default = text and/or initial value)
	Limitation: The time-controlled resetting of counter variable is only effected in case of an active print order. If a print order is cancelled before the specified time and afterwards again restarted, then no resetting of counter value is effected.
t1, t2, ...	text res. start value of counter

Example:

Input: =CN(10;7;4;+1;1;06:00;0001)1234

The enquiry for the initial value is effected at print start and
at 6:00 the counter variable is reset to value 0001.

7.4 Extended Counter

SOH	BM	[n]	=	C	C	(+/-	s	;	i	;	m	;	z	;	n	;	x)	t	ETB
-----	----	-----	---	---	---	---	-----	---	---	---	---	---	---	---	---	---	---	---	---	---	-----

= CC	identification of numeric counter
+/-	direction
+	counter adding
-	counter subtracting
s	step width
i	update interval (number of labels with identical number)
m	function mode
0	standard
1	return to start value
2	enter the start value at the beginning of printing (default = existing start value)
3	enter the start value at the beginning of printing (default = last final number)
4	reset start value at cycle end (only for DPM IIIi)
5	set min. / max. value
6	set start value
7	print end
z	leading zeros
0	no leading zeros
1	printout with leading zeros
n	minimum value (max. -999999999)
x	maximum value (max. 999999999)
t	start value (the number of digits determines the format for the printout with leading zeros (max. 999999999)

Example:

Input: =CC(+1;2;5;0;1,999)0050

Printout: 50, 51,...999, 1, 2, ...

7.5 Date and Time

```
SOHBM[n]=CL(m;d;i;n;c;mo;pd;pm;md;mm;rw;ws)t1t...t70ETB
```

= CL identification date/time
 m month offset to the actual date
 d day offset to the actual date
 i update interval
 (0 = at the beginning of a print order, 1 = each label)

Optional parameters

n minute offset to the actual time
 (negative entry/value possible)
 c correction month overflow
 (0 = change to the next month, 1 = remain in current month)

Optional parameters for BBE date

mo input mode
 0: standard; display current date of real time clock
 1: display calculated date, modification possible
 2: display calculated date, no modification possible
 pd max. positive correction days
 pm max. positive correction months
 md max. negative correction days
 mm max. negative correction months

Optional parameters for rounded date

rw rounded weekday: 1 = Sunday ... 7 = Saturday; 0 = no rounding
 ws start of week, format: "D-HH:MM",
 e.g. 1-00:00 = Sunday, 0:00 Uhr

Example

Actual date as per Real Time Clock: 22.01.10

Input: =CL(0;0;0)<DD.MO.> Printout: 08.12.
 Input: =CL(2;1;0)<DD.MO.> Printout: 09.02.

Example for BBE date

Input: =CL(0;0;0;0;0;1;3;2;3;2)<DD.MO.>

At print start the calculated date is displayed at the printer and can be modified (+/- 3 days and +/- 2 months):

Display: ID_1 DD:MO:YY
 ID_1 08.12.11

Example for rounded date

The beginning of the week is on Sunday (08.12.) at 00:00. The date of Monday should be printed the whole week.

Input: =CL(0;0;0;0;0;0;0;0;0;2;1-00:00)<DD.MO.>

Current date	Rounded date
07.12. 23:59:59	02.12.
08.12. 00:00:00	09.12.
09.12.	09.12.
14.12. 23:59:59	09.12.
15.12. 00:00:00	16.12.

7.6 Format Identifier (Date & Time)

Standard format	
HH	Hours 2-digit (24 hours)
HE	Hours 2-digit (12 hours)
MI	Minutes 2-digit
SS	Seconds 2-digit
AM	AM/PM output
DD	Day 2-digit
MO	Month 2-digit
YYYY	Year 4-digit
YY	Year 2-digit
Y	Year 1-digit
WW	Calendar week
DW	Day of week (Sunday = 0)
DW1	Day of week (Sunday = 1)
DwX	Day of week An arbitrary ASCII character can be used for x, from which it is counted consecutively.
DOWxxxxxx	Day of week - variable For x, any ASCII character can be used. The first ,x' denominates Sunday, the next denominates Monday and so on until Saturday For each weekday a character must be created
DOY	Day of year 3-digit (First January = 1)
DY	Day of year 3-digit (First January = 0)
Examples	
DD.MO.YY	22.01.10
MO/DD/YYYY	01/22/2010
YY-MO-DD	10-01-22
YYMODD	100122

The format identifier 'HE' and 'AM'/'am'/'Am' are supplemented. Therefore, the output of hours in 12-hours mode is possible. By the additional output of format identifier 'AM' the output of time in American/English format is possible.

Example

```
=CL(0;0;0;0)<HH:MI:SS>      --> 15:30:00
=CL(0;0;0;0)<HE:MI:SS>      --> 03:30:00
=CL(0;0;0;0)<HE:MI:SS AM>   --> 03:30:00 PM
=CL(0;0;0;0)<HE:MI:SS am>   --> 03:30:00 pm
=CL(0;0;0;0)<HE:MI:SS Am>   --> 03:30:00 p.m.
```

By separating the output of time and AM/PM output in 2 text fields, also the following output format is possible:

```
--> 03:30:00 pm
```

Extended format	
XMO	Name of month short
XSO	Name of month long
XSD	Weekday short
XLD	Weekday long
For X you can enter the country identification of desired language	
C = Canadian D = Danish E = English F = French G = German I = Italian N = Dutch O = Norwegian S = Spanish U = Finnish W = Swedish	
Examples:	
DD.EMO.YY	22.JAN.10
DD.ESO YYYY	22. January 2010
ELD,DD.GMO.YY	Friday, 22. JAN.10
ESD,DD.MO.YY	FR, 22.01.10

Extended format - XMO

C	JA	FE	MR	AL	MA	JN	JL	AU	SE	OC	NO	DE
D	JAN	FEB	MAR	APR	MAJ	JUN	JUL	AUG	SEP	OKT	NOV	DEC
E	JAN	FEB	MAR	APR	MAY	JUN	JUL	AUG	SEP	OCT	NOV	DEC
F	JAN	FEV	MAR	AVR	MAI	JUIN	JUIL	AOU	SEP	OCT	NOV	DEC
G	JAN	FEB	MRZ	APR	MAI	JUN	JUL	AUG	SEP	OKT	NOV	DEZ
I	GEN	FEB	MAR	APR	MAG	GIU	LUG	AGO	SET	OTT	NOV	DIC
N	JAN	FEB	MRT	APR	MEI	JUN	JUL	AUG	SEP	OKT	NOV	DEC
O	JAN	FEB	MAR	APR	MAI	JUN	JUL	AUG	SEP	OKT	NOV	DES
S	ENE	FEB	MAR	ABR	MAY	JUN	JUL	AGO	SEP	OCT	NOV	DIC
U	TAM	HEL	MAA	HUH	TOU	KES	HEI	ELO	SYU	LOK	MAR	JOU
W	JAN	FEB	MAR	APR	MAJ	JUN	JUL	AUG	SEP	OKT	NOV	DEC

Extended format - XSO

C	January	February	March	April	May	June
D	Januar	Februar	Marts	April	Maj	Juni
E	January	February	March	April	May	June
F	Janvier	Février	Mars	Avril	Mai	Juin
G	Januar	Februar	Maerz	April	Mai	Juni
I	Gennaio	Febbraio	Marzo	Aprile	Maggio	Giugno
N	Januari	Februari	Maart	April	Mei	Juni
O	Januar	Februar	Mars	April	Mai	Juni
S	Enero	Febrero	Marzo	Abril	Mayo	Junio
U	Tammikuu	Helmikuu	Maaliskuu	Huhtikuu	Toukokuu	Kesaekuu
W	Januari	Februari	Mars	April	Maj	Juni

C	July	August	September	October	November	December
D	Juli	August	September	Oktober	November	December
E	July	August	September	October	November	December
F	Juillet	Août	Septembre	Octobre	Novembre	Décembre
G	Juli	August	September	Oktober	November	Dezember
I	Luglio	Agosto	Settembre	Ottobre	Novembre	Dicembre
N	Juli	Augustus	September	Oktober	November	December
O	Juli	August	September	Oktober	November	Desember
S	Julio	Agosto	Septiembre	Octubre	Noviembre	Diciembre
U	Heinaekuu	Elokuu	Syyskuu	Lokakuu	Marraksuu	Joulukuu
W	Juli	Augusti	September	Oktober	November	December

Extended format - XSD

C	SUN	MON	TUE	WED	THU	FRI	SAT
D	SO	MA	TI	ON	TO	FR	LO
E	SUN	MON	TUE	WED	THU	FRI	SAT
F	DIM	LUN	MAR	MER	JEU	VEN	SAM
G	SO	MO	DI	MI	DO	FR	SA
I	DOM	LUN	MAR	MER	GIO	VEN	SAB
N	ZO	MA	DI	WO	DO	VR	ZA
O	SO	MA	TI	ON	TO	FR	LO
S	DOM	LUN	MAR	MIE	JUE	VIE	SAB
U	SU	MA	TI	KE	TO	PE	LA
W	SO	LA	TI	ON	TO	FR	LO

Extended format - XLD

C	Sunday	Monday	Tuesday	Wednesday	Thursday	Friday	Saturday
D	Søndag	Mandag	Tirsdag	Onsdag	Torsdag	Fredag	Lørdag
E	Sunday	Monday	Tuesday	Wednesday	Thursday	Friday	Saturday
F	Dimanche	Lundi	Mardi	Mercredi	Jeudi	Vendredi	Samedi
G	Sonntag	Montag	Dienstag	Mittwoch	Donnerstag	Freitag	Samstag
I	Domenica	Lunedì	Martedì	Mercoledì	Giovedì	Venerdì	Sabato
N	Zondag	Maandag	Dinsdag	Woensdag	Donderdag	Vrijdag	Zaterdag
O	Søndag	Mandag	Tirsdag	Onsdag	Torsdag	Fredag	Lørdag
S	Domingo	Lunes	Martes	Miércoles	Jueves	Viernes	Sábado
U	Sunnuntai	Maanantai	Tiistai	Keski-viikko	Torstai	Perjantai	Lauantai
W	Söndag	Måndag	Tisdag	Onsdag	Torsdag	Fredag	Lördag

7.7 Currency Variable

SOH	BM	[n]	=	C	U	(a	;	b	;	c	;	d	;	e	;	f	;	g)	t1	t2	t...	t70	ETB
-----	----	-----	---	---	---	---	---	---	---	---	---	---	---	---	---	---	---	---	---	---	----	----	------	-----	-----

= CU Signification of variable Euro

a ANSI-Code of thousand separator as decimal figure

b ANSI-Code of comma separator as decimal figure

c Quantity of numbers after the comma as decimal figure

d Operand A Before processing the variable Euro
calculates the term

e Operand B

f Operand C A x B
C

g Rounding format

t1, t2, ... Format string, is indicated by "< >"

Example:

In case the contents of field 20 has to be converted from USD into EUR the definition of variable for the user defined format is as follows:

B01 '=CU(46;44;2;20;"1,0";"0,68861";"0,01")Result: <>Euro'

B20 1.250,44 USD

Printout: 1.250,44 USD

Result: 1.815,89 Euro*

* 1 USD = 0,68861 Euro (11.01.2010)

7.8 Shift Variable

```
SOH BM [n] = S H ( ) t1 t2 t... t70 ETB
```

= SH identification of shift variable



NOTICE!

The shift variable did not need any parameters. The settings for the output are defined with the corresponding parameter sets. (see above)

Beispiel

The shift times are defined: 00:00 - 11:59 "Shift1"
 12:00 - 23:59 "Shift2"

```
=SH() Printout at 10:00 Uhr: "Shift1"  

=SH() Printout at 13:00 Uhr: "Shift2"
```

Set shift times

```
SOH F C I D - - r N N H H M M h h m m ETB
```

NN = ID [01 ... 24]
 HH = start hour
 MM = start minute
 hh = end hour
 mm = end minute

Get shift variable

```
SOH F C I D - - w N N p p p p p p p p p p ETB
```

Answer

```
SOH A N N H H M M h h m m p p p p p p p p ETB
```

Set shift text

```
SOH F C I E - - r N N T T T T T T T T T T ETB
```

NN = ID [01 ... 10]
 T = max. 24 characters

Get shift variable

```
SOH F C I E - - w N N p p p p p p p p ETB
```

Answer

```
SOH A N N ; T T T T T T T T T T ; p p p p p p p p ETB
```

7.9 User Guiding

```
SOH BM [n] = U G ( c ; t ; m ; ap ; ae ; sp ) t1 t2 t... t70 ETB
```

= UG identification user guiding

c start position for the entry

t type of entry
 0 numerical
 1 alphanumerical

m mode of entry
 0 do not jump over special characters
 1 jump over special characters

ap alignment at printing
 0 aligned to the right side

ae alignment at entry
 0 aligned to the right side

sp prompt text for the variable, max. 24 characters
 The entry must be included in " .

Example

Entry: =UG(1;0;0;0;0;"Enter article no.")<123456>

Display: Enter article no.
 123456

7.10 User Guiding with Mask

```
SOH|BM|[n]=UM(c;t;m;ap;ae;sp;d;ma)t1t2t...t70ETB
```

= UM	identification user guiding with mask
c	start position for the entry
t	type of entry (is ignored with existing mask definition) 0 numerical 1 alphanumerical
m	mode of entry (is ignored with existing mask definition) 0 do not jump over special characters 1 jump over special characters
ap	alignment at printing 0 aligned to the right side
ae	alignment at entry (always left aligned with existing mask definition) 0 right aligned 1 left aligned, cursor at the beginning of the text 2 left aligned, cursor at the start position 3 right aligned, remove fill characters 4 left aligned, cursor at the beginning of the text, remove fill characters 5 left aligned, cursor at the start position, remove fill characters
sp	prompt text for the variable, max. 24 characters The entry must be included in ".
d	deleting setpoint value 0 setpoint value remains at key entry (inserting mode) 1 with first key press the setpoint value disappears 2 setpoint value is retained (overwrite mode)
ma	definition of mask mask characters are 9 numbers only # only numbers and leading signs ? letters only a alphanumeric characters (letters and numbers) C any characters

Example

```
Entry:      =UM(1;0;0;0;0;"Enter article no.";0;"999-aa")<123-xx>
Display:    Enter article no.
            123-xx
```

7.11 Memory Card Data

```
SOHBM[n]=MD(FN="filename";SE='x';CH=x;SC="x";SF="x";RC="x")ETB
```

= MD	identification of memory card data
FN	file name of table onto memory card with CSV data
SE	Separator sign (default = ';')
CH	column name in the first line (0 = no, 1 = yes)
SC	name and/or number of columns that should be referenced
SF	field name and/or field index of field onto the label, which contains the searched data
RC	name and/or number of columns, which contains the data to be printed



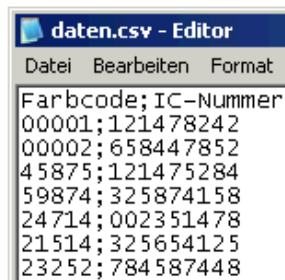
NOTICE!

If in parameter SF a field name is indicated, this must have been defined for the appropriate field by an AC attribute statement!

Example

```
AC[1]NAME="FCODE"
BM[2]=MD(FN="a:\daten.csv";SE=';';CH=1;SC="Farbcode";SF="FCODE";
RC="IC-Nummer")
```

Field 1	Output Field 2
00001	121478242
23252	784587448



7.12 GS1-128 Parser



NOTICE!

By means of this variable type, the content of an application identifier in a GS1-128 bar code can be determined.

```
SOHBM[n]=AI(p;Ai)ETB
```

= AI	identification of GS1-128 parser
p	identification of the link element (field number)
Ai	application identifier

Example

```
Field 1 ="00123456789012345675" GS1-128 with AI00
=AI(1;"00") Printout:
123456789012345675
```

7.13 Check Digit

SOH	BM	[n]	=	C	D	(d	;	s	;	l	;	t	;	w	;	m	;	r	;	o)	t1	t...	t70	ETB
-----	----	-----	---	---	---	---	---	---	---	---	---	---	---	---	---	---	---	---	---	---	---	---	----	------	-----	-----

- = CD Identification of check digit
- d Data for check digit calculation (field number of constant text)
Constant text is enclosed in "".
- s Start position within data
1 ...n Start calculation at digit x
- l Check digit type
 - 0 Modulo 10 (weighting 3)
 - 1 Modulo 11
 - 2 Modulo 43
 - 3 Modulo 47 (weighting 15)
 - 4 Modulo 47 (weighting 20)
 - 5 Modulo 103
 - 6 Customized

Optional parameters for customized check digit

- w Weighting.
Constant text enclosed in "" - contains the individual weighting values or an interval.
Individual values: "x₁,x₂"
Interval: "x₁...x₂"
- m Modulo
- r Add result to
- o Print only one digit
 - 0 No
 - 1 Yes

Example

Entry: =CD("123456789012";0;0;0)
Printout: 8

Entry: =CD("1234567890";0;0;6;"1,3";10;10;1)
Printout: 5

7.14 Substring

SOH	BM	[n]	=	SS	(d	;	s	;	l)	ETB
-----	----	-----	---	----	---	---	---	---	---	---	---	-----

- = SS Identification of substring
- d Data used for substring extraction (field number or field name or constant text.
Constant text is enclosed in "".
- s Start position within data. If this parameter is omitted, the substring extraction starts with the 1st character of the data string.
1 n Start at digit x
- l Number of digits. If this parameter is omitted, all characters from the start position to the end of the data string are returned.
1 ...n At the start position x digits

Example:

Entry: =SS("1234567890";4;3)
 Printout: 456
 Field "ARTIKELNR" has the contents "370012330295"

Entry: =SS(ARTIKELNR;1;4)
 Printout: 3700

8 Parameter Sets

8.1 Label Parameters

Set label photocell type

SOH F C D E - - r N - - - - - - ETB

- N: 0 = transmission photocell normal
- N: 1 = not used
- N: 2 = transmission photocell inverse
- N: 3 = not used
- N: 4 = not used

Get label photocell type

SOH F C D E - - w p p p p p p p p ETB

Answer

SOH A N - - - - - - p p p p p p p p ETB

Set label type

SOH F C D A - - r N - - - - - - ETB

- N: 0 = change to adhesive labels (automatically measure process)
- N: 1 = change to continuous labels

Get label type

SOH F C D A - - w p p p p p p p p ETB

Answer

SOH A N - - - - - - p p p p p p p p ETB

Measure label

In case of loading a new label roll, start measuring by this command.

SOH F C B - - - r - - - - - - - - ETB

The current label and gap length in the printer can be sent to the Host computer:

SOH F C B - - - w p p p p p p p p ETB

After this command the printer sends the following answer:

Answer

SOH A E E E E S S S S p p p p p p p p ETB

- EEEE = label length in mm (ASCII)
- SSSS = gap length in mm (ASCII)

Set label length in 1/100 mm

SOH F C C L - - r N N N N N N N - ETB

N = value of label length in 1/100 mm, 7-digit ASCII number

Get label length in 1/100 mm

SOH F C C L - - w N N N N N N N - ETB

Answer

SOH A N N N N N N N - p p p p p p p p ETB

Set gap length in 1/100 mm

SOH F C C M - - r M M M M M - - - ETB

M = value of gap length in 1/100 mm, 5-digit ASCII number

Get gap length in 1/100 mm

SOH F C C M - - w M M M M M - - - ETB

Answer

SOH A M M M M M - - - p p p p p p p p ETB

Set label width in 1/100 mm

SOH F C C O - - r N N N N N N N ETB

N = indication of label width in 1/100 mm, 7-digit ASCII number

Get label width in 1/100 mm

SOH F C C O - - w P P P P P P P P ETB

Answer

SOH A N N N N N N N - p p p p p p p p ETB

Set label error length in mm

SOH F C D G A - r N N N - - - - ETB

NNN = indication of label error length in mm (1 ... 999)

Get label error length

SOH F C D G A - w p p p p p p p p ETB

Answer

SOH A N N N - - - - p p p p p p p p ETB

Set label synchronisation

SOH F C D G B - r N - - - - - ETB

N: 0 = Off

N: 1 = On

Get label synchronisation

SOH F C D G B - w p p p p p p p p ETB

Answer

SOH A N - - - - - p p p p p p p p ETB

Set number of columns

SOH F C C H A - r N - - - - - ETB

N = number of columns (1 ... 9)

Get number of columns

SOH F C C H A - w p p p p p p p p ETB

Answer

SOH A N - - - - - p p p p p p p p ETB

Set column width

SOH F C C H B - r N N N - - - - - ETB

NNN = indication of column width in 1/10 mm (0 ... 999)

Get column width

SOH F C C H B - w p p p p p p p p ETB

Answer

SOH A N N N - - - - - p p p p p p p p ETB

Set label alignment

SOH F C C J - - r N - - - - - ETB

N: 0 = left

N: 1 = centre

N: 2 = right

Get label alignment

SOH F C C J - - w p p p p p p p p ETB

Answer

SOH A N - - - - - p p p p p p p p ETB

Set contrast

SOH	F	C	A	B	-	-	r	N	N	N	-	-	-	-	ETB
-----	---	---	---	---	---	---	---	---	---	---	---	---	---	---	-----

NNN: indication of contrast in % (010 ... 200)
 necessary to transmit a 3-digit ASCII number.

Get contrast

SOH	F	C	A	B	-	-	w	p	p	p	p	p	p	p	p	ETB
-----	---	---	---	---	---	---	---	---	---	---	---	---	---	---	---	-----

Answer

SOH	A	N	N	N	-	-	-	-	p	p	p	p	p	p	p	ETB
-----	---	---	---	---	---	---	---	---	---	---	---	---	---	---	---	-----

Set flip label

SOH	F	C	D	O	-	-	r	N	-	-	-	-	-	ETB
-----	---	---	---	---	---	---	---	---	---	---	---	---	---	-----

N: 0 = flip label Off

N: 1 = flip label On

Get flip label

SOH	F	C	D	O	-	-	w	p	p	p	p	p	p	p	p	ETB
-----	---	---	---	---	---	---	---	---	---	---	---	---	---	---	---	-----

Answer

SOH	A	N	-	-	-	-	-	p	p	p	p	p	p	p	p	ETB
-----	---	---	---	---	---	---	---	---	---	---	---	---	---	---	---	-----

Set rotate label

SOH	F	C	D	N	-	-	r	X	-	-	-	-	-	ETB
-----	---	---	---	---	---	---	---	---	---	---	---	---	---	-----

X: 0 = rotate label Off

X: 1 = rotate label On

Get rotate label

SOH	F	C	D	N	-	-	w	p	p	p	p	p	p	p	p	ETB
-----	---	---	---	---	---	---	---	---	---	---	---	---	---	---	---	-----

Answer

SOH	A	X	-	-	-	-	-	p	p	p	p	p	p	p	p	ETB
-----	---	---	---	---	---	---	---	---	---	---	---	---	---	---	---	-----

Set mode flip/rotate label

SOH	F	C	D	S	-	-	r	N	-	-	-	-	-	ETB
-----	---	---	---	---	---	---	---	---	---	---	---	---	---	-----

N: 0 = flip/rotate label at the centre point of label

N: 1 = flip/rotate label at the centre point of printhead

Get mode flip/rotate label

SOH	F	C	D	S	-	-	w	p	p	p	p	p	p	p	p	ETB
-----	---	---	---	---	---	---	---	---	---	---	---	---	---	---	---	-----

Answer

SOH	A	N	-	-	-	-	-	p	p	p	p	p	p	p	p	ETB
-----	---	---	---	---	---	---	---	---	---	---	---	---	---	---	---	-----

Set material selection

SOH F C D N C - r N N N N - - - - ETB

NNNN: indication of material
 0 = type 1
 1 = type 2

Get material selection

SOH F C D N C - w p p p p p p p p ETB

Answer

SOH A N N N N - - - - p p p p p p p p ETB

Set rotate label in 90 degrees

SOH F C D N D - r N - - - - - - - - ETB

N: 0 = 0°
 N: 1 = 90°
 N: 2 = 180°
 N: 3 = 270°

Get rotate label in 90 degrees

SOH F C D N D - w p p p p p p p p ETB

Answer

SOH A N - - - - - - - - p p p p p p p p ETB

Set scan position

SOH F C D E A - r N N - - - - - - - - ETB

NN = indication of scan position in % of the set label length (01 ... 99)
 value depends on the label length

Get scan position

SOH F C D E A - w p p p p p p p p ETB

Answer

SOH A N N - - - - - - - - p p p p p p p p ETB

Set sensitivity of transmission photocell

SOH F C D E B - r N N N - - - - - - - - ETB

NNN = indication of photocell sensitivity
 3-digit ASCII number (001 ... 255)

Get sensitivity of transmission photocell

SOH F C D E B - w p p p p p p p p ETB

Answer

SOH A N N N - - - - - - - - p p p p p p p p ETB

8.2 Photocell

**Get minimal measured level at label photocell
(label parameter A)**

SOH F C M A A - w p p p p p p p p ETB

Answer

SOH A N N N - - - - p p p p p p p p ETB

NNN = value of measured level, 3-digit ASCII number in 1/100 V

**Get maximal measured level at label photocell
(label parameter B)**

SOH F C M A B - w p p p p p p p p ETB

Answer

SOH A N N N - - - - p p p p p p p p ETB

NNN = value of measured level, 3-digit ASCII number in 1/100 V

Set switching threshold at label photocell (label parameter C)

SOH F C M A C - r N N N - - - - ETB

NNN = value of switching threshold, 3-digit ASCII number in 1/100 V
value is automatically calculated at measuring process at
printer ($\min + \frac{\max - \min}{3}$)

Get switching threshold

SOH F C M A C - w p p p p p p p p ETB

Answer

SOH A N N N - - - - p p p p p p p p ETB

NNN = value at measured switching threshold
3-digit ASCII number in 1/100 V

Get current value at transfer ribbon photocell

SOH F C M B A - w p p p p p p p p ETB

Answer

SOH A N - - - - - p p p p p p p p ETB

N: 0 = transfer ribbon inserted

N: 1 = no transfer ribbon

Get current value at label photocell

SOH	F	C	M	B	B	-	w	p	p	p	p	p	p	p	p	p	p	ETB
-----	---	---	---	---	---	---	---	---	---	---	---	---	---	---	---	---	---	-----

Answer

SOH	A	N	N	N	-	-	-	-	-	p	p	p	p	p	p	p	p	ETB
-----	---	---	---	---	---	---	---	---	---	---	---	---	---	---	---	---	---	-----

NNN: value at label photocell, 3-digit ASCII number in 1/100 V

Get status at dispenser photocell

SOH	F	C	M	B	E	A	w	p	p	p	p	p	p	p	p	p	p	ETB
-----	---	---	---	---	---	---	---	---	---	---	---	---	---	---	---	---	---	-----

Answer

SOH	A	N	-	-	-	-	-	-	-	p	p	p	p	p	p	p	p	ETB
-----	---	---	---	---	---	---	---	---	---	---	---	---	---	---	---	---	---	-----

N: 0 = no label at photocell

N: 1 = label at photocell

Set switching threshold of dispenser photocell is taken into consideration.

8.3 Printer Parameters

Set print speed

SOH	F	C	A	A	-	-	r	N	N	N	-	-	-	-	-	ETB
-----	---	---	---	---	---	---	---	---	---	---	---	---	---	---	---	-----

NNN: Indication of print speed in mm/s

ILX V 5X, 8X, 10X = 400 mm/s (depending on the printhead)

ILX V 106/24 = 100 mm/s

It is necessary to transmit a 3-digit ASCII number

Get print speed

SOH	F	C	A	A	-	-	w	p	p	p	p	p	p	p	p	p	ETB
-----	---	---	---	---	---	---	---	---	---	---	---	---	---	---	---	---	-----

Answer

SOH	A	N	N	N	-	-	-	-	p	p	p	p	p	p	p	p	ETB
-----	---	---	---	---	---	---	---	---	---	---	---	---	---	---	---	---	-----

Set transfer ribbon control On/Off

SOH	F	C	D	B	-	-	r	N	M	-	-	-	-	-	-	ETB
-----	---	---	---	---	---	---	---	---	---	---	---	---	---	---	---	-----

N: 1 = transfer ribbon control On

N: 0 = transfer ribbon control Off

M: 0 = weak sensibility

M: 1 = strong sensibility

Get transfer ribbon On/Off

SOH	F	C	D	B	-	-	w	p	p	p	p	p	p	p	p	p	ETB
-----	---	---	---	---	---	---	---	---	---	---	---	---	---	---	---	---	-----

Answer

SOH	A	N	M	-	-	-	-	-	p	p	p	p	p	p	p	p	ETB
-----	---	---	---	---	---	---	---	---	---	---	---	---	---	---	---	---	-----

Set field handling

SOH	F	C	D	K	-	-	r	N	-	-	-	-	-	-	-	ETB
-----	---	---	---	---	---	---	---	---	---	---	---	---	---	---	---	-----

N: 0 = field handling Off

N: 1 = graphic received

N: 2 = delete graphic

N: 3 = restore graphic

Get field handling

SOH	F	C	D	K	-	-	w	p	p	p	p	p	p	p	p	p	ETB
-----	---	---	---	---	---	---	---	---	---	---	---	---	---	---	---	---	-----

Answer

SOH	A	N	-	-	-	-	-	-	p	p	p	p	p	p	p	p	ETB
-----	---	---	---	---	---	---	---	---	---	---	---	---	---	---	---	---	-----

Set printer language

SOH F C D I - - r N - - - - - - ETB

- N: 0 = German
- N: 1 = English
- N: 2 = French
- N: 3 = Spanish
- N: 4 = Finish
- N: 5 = Czech
- N: 6 = Portuguese
- N: 7 = Netherlands
- N: 8 = Italian
- N: 9 = Danish
- N: 10 = Polish
- N: 11 = Greek
- N: 12 = Hungarian
- N: 13 = Russian
- N: 14 = Chinese
- N: 15 = not used
- N: 16 = Ukrainian
- N: 17 = Turkish
- N: 18 = Swedish
- N: 19 = Norwegian
- N: 20 = Estonian
- N: 21 = Romanian

Get printer language

SOH F C D I - - w p p p p p p p p ETB

Answer

SOH A N - - - - - - p p p p p p p p ETB

Set external printer parameters

SOH F C C P - - r N - - - - - - ETB

- N: 0 = only parameter settings by interface for label length, gap length and label width are taken into consideration.
- N: 1 = parameter settings by interface are processed
- N: 2 = parameter settings by interface are not taken into consideration

Get external printer parameters

SOH F C C P - - w p p p p p p p p ETB

Answer

SOH A N - - - - - - p p p p p p p p ETB

Set Codepage

SOH F C C N - - r N - - - - - - ETB

- N: 0 = Codepage 1252 West European (former ANSI)
- N: 1 = Codepage 437 English
- N: 2 = Codepage 850 Western European
- N: 3 - 8 = not used
- N: 9 = Codepage 852 Slavic
- N: 10 = Codepage 857 Turkish
- N: 11 = Codepage 1250 Central and East European
- N: 12 = Codepage 1251 Cyrillic
- N: 13 = Codepage 1253 Greek
- N: 14 = Codepage 1254 Turkish
- N: 15 = Codepage 1257 Baltic
- N: 16 = WGL4 (UTF-8 coded data transmission)

Please find the tables referring to the above-mentioned character sets on www.carl-valentin.de/Downloads.

Get Codepage

SOH F C C N - - w p p p p p p p p ETB

Answer

SOH A N - - - - - - p p p p p p p p ETB

Set customized entry

SOH F C D U - - r N - - - - - ETB

- N: 0 = Off No question appears at the display. In this case the stored default value is printed.
- N: 1 = On The question referring the customized variable appears once before the print start at the display.
- N: 2 = Auto The question referring the customized variable appears again after print end. Additionally, a query appears demanding the number of copies that should be print.
- N: 3 = Auto without quantity:
The question referring the customized variable appears again after print end. However, the same number of copies is printed. This number was defined once at the start of the print order.

Get customized entry

SOH F C D U - - w p p p p p p p p ETB

Answer

SOH A N - - - - - p p p p p p p p ETB

Set keyboard layout

SOH F C C K - - r N - - - - - ETB

- N: 0 = German
- N: 1 = English
- N: 2 = French
- N: 3 = Greek
- N: 4 = Spanish
- N: 5 = Swedish
- N: 6 = US American
- N: 7 = Russian

Get keyboard layout

SOH F C C K - - w p p p p p p p p ETB

Answer

SOH A N - - - - - p p p p p p p p ETB

Set sound level of key click (buzzer)

SOH F C C B - - w p p p p p p p p ETB

- N: 0 = buzzer Off
- N: 1-7 = sound level of key click

Get sound level of key click (buzzer)

SOH F C C B - - w p p p p p p p p ETB

Answer

SOH A N - - - - - p p p p p p p p ETB

Set brightness of display (contrast)

SOH F C C B B - r N N N - - - - ETB

NNN = value range of display brightness 045 ... 075

Get display brightness

SOH F C C B B - w p p p p p p p p ETB

Answer

SOH A N N N - - - - p p p p p p p p ETB

Set hotstart On/Off

SOH F C D W - - r N - - - - - - ETB

N: 0 = Off

N: 1 = On

Get hotstart On/Off

SOH F C D W - - w p p p p p p p p ETB

Answer

SOH A N - - - - - - p p p p p p p p ETB

Set autoloading

SOH F C D X - - r N - - - - - - ETB

N: 0 = Off

N: 1 = On

Get autoloading

SOH F C D X - - w p p p p p p p p ETB

Answer

SOH A N - - - - - - p p p p p p p p ETB

Set standard label On/Off

SOH F C M K E - r N - - - - - - ETB

N: 0 = Off (default) - print start without label definition signalizes error

N: 1 = On - standard label is printed without label definition

Get standard label On/Off

SOH F C M K E - w p p p p p p p p ETB

Answer

SOH A N - - - - - - p p p p p p p p ETB

Set backfeed operating mode

SOH F C M R A - r N - - - - - ETB

N: 0 = standard
 N: 1 = automatic
 N: 2 = no backfeed
 N: 3 = optimized

Get backfeed operating mode

SOH F C M R A - w p p p p p p p p ETB

Answer

SOH A N - - - - - p p P p p p p p ETB

Set backfeed delay

SOH F C M R B - r N N N - - - - - ETB

NNN: indication of delay time, 3-digit ASCII number in 1/100s

Get backfeed delay

SOH F C M R B - w p p p p p p p p ETB

Answer

SOH A N N N - - - - - p p p p p p p p ETB

Set label change confirmation

SOH F C S D F C r N - - - - - ETB

N: 0 = Off
 N: 1 = On

Get label change confirmation

SOH F C S D F C w p p p p p p p p ETB

Answer

SOH A N - - - - - p p p p p p p p ETB

Set label synchronization at switching on

SOH F C C A - - r N - - - - - ETB

N: 0 = Off
 N: 1 = Measure
 N: 2 = Label feed

Get synchronization at switching on

SOH F C C A - - w p p p p p p p p ETB

Answer

SOH A N - - - - - p p p p p p p p ETB

8.4 Dispenser I/O

Set dispenser mode

SOH | F | C | D | C | - | - | r | N | - | - | - | - | - | - | - | - | ETB

- N: 0 = Dispenser mode Off
- N: 1 = External I/O static
- N: 2 = Dispenser photocell
- N: 3 = External I/O static continuous
- N: 4 = Dispenser photocell continuous
- N: 5 = External I/O dynamic
- N: 6 = External I/O dynamic continuous

Get dispenser mode

SOH | F | C | D | C | - | - | w | p | p | p | p | p | p | p | p | ETB

Answer

SOH | A | N | - | - | - | - | - | - | - | p | p | p | p | p | p | p | p | ETB

Set dispenser level photocell

SOH | F | C | C | F | - | - | r | V | N | N | - | - | - | - | - | - | ETB

- V = pre-sign of offset (always +)
- NN = offset value, 2-digit ASCII number in 1/10 Volt (5 ... 40)

Get dispenser level photocell

SOH | F | C | C | F | - | - | w | p | p | p | p | p | p | p | p | ETB

Answer

SOH | A | V | N | N | - | - | - | - | - | - | p | p | p | p | p | p | p | p | ETB

Set sensitivity of dispenser photocell

SOH | F | C | C | F | A | - | r | N | N | N | - | - | - | - | - | - | ETB

- NNN = Indication of photocell sensitivity
- 3-digit ASCII number (001 ... 255)

Get sensitivity of dispenser photocell

SOH | F | C | C | F | A | - | w | p | p | p | p | p | p | p | p | ETB

Answer

SOH | A | V | N | N | - | - | - | - | - | - | p | p | p | p | p | p | p | p | ETB

Get status of I/O inputs

SOH	F	C	M	D	A	-	w	p	p	p	p	p	p	p	p	p	ETB
-----	---	---	---	---	---	---	---	---	---	---	---	---	---	---	---	---	-----

Answer

SOH	A	1	2	3	4	5	6	7	8	p	p	p	p	p	p	p	ETB
-----	---	---	---	---	---	---	---	---	---	---	---	---	---	---	---	---	-----

Inputs 1-8 / port 1-8:

1 = Port active

0 = Port not active

- = Port not connected, signal blocked or output

Get status of I/O inputs

SOH	F	C	M	D	A	B	w	p	p	p	p	p	p	p	p	p	ETB
-----	---	---	---	---	---	---	---	---	---	---	---	---	---	---	---	---	-----

Answer

SOH	A	1	2	3	4	5	6	7	8	9	10	11	12	13	14	15	16	p	p	p	p	p	p	p	ETB
-----	---	---	---	---	---	---	---	---	---	---	----	----	----	----	----	----	----	---	---	---	---	---	---	---	-----

Inputs 1-16 / port 1-16:

1 = Port active

0 = Port not active

- = Port not connected, signal blocked or output

Get status of I/O outputs

SOH	F	C	M	D	B	-	w	p	p	p	p	p	p	p	p	ETB
-----	---	---	---	---	---	---	---	---	---	---	---	---	---	---	---	-----

Answer

SOH	A	1	2	3	4	5	6	7	8	p	p	p	p	p	p	p	ETB
-----	---	---	---	---	---	---	---	---	---	---	---	---	---	---	---	---	-----

Outputs 1-8 / port 9-16:

1 = Port active

0 = Port not active

- = Port not connected, signal blocked or input

Get status of I/O outputs

SOH	F	C	M	D	B	B	w	p	p	p	p	p	p	p	ETB
-----	---	---	---	---	---	---	---	---	---	---	---	---	---	---	-----

Answer

SOH	A	1	2	3	4	5	6	7	8	9	10	11	12	13	14	15	16	p	p	p	p	p	p	ETB
-----	---	---	---	---	---	---	---	---	---	---	----	----	----	----	----	----	----	---	---	---	---	---	---	-----

Outputs 1-16 / port 1-16:

1 = Port active

0 = Port not active

- = Port not connected, signal blocked or input

Set IN signal level

SOH F C M D C - r 1 2 3 4 5 6 7 8 ETB

port 1-8 (dispenser inputs 1-8):

- 2 = Increased and decreased
- 1 = Increased
- 0 = Decreased
- s = I/O signal by interface
- x = I/O signal blocked

Only possible for ports that are specified as input.

Get IN signal level

SOH F C M D C - w p p p p p p p p ETB

Answer

SOH A 1 2 3 4 5 6 7 8 p p p p p p p p ETB

Set IN signal level

SOH F C M D C B r 1 2 3 4 5 6 7 8 9 10 11 12 13 14 15 16 ETB

port 1-16 (dispenser inputs 1-16):

- 2 = Increased and decreased
- 1 = Increased
- 0 = Decreased
- s = I/O signal by interface
- x = I/O signal blocked

Only possible for ports that are specified as input.

Get IN signal level

SOH F C M D C B w p p p p p p p p ETB

Answer

SOH A 1 2 3 4 5 6 7 8 9 10 11 12 13 14 15 16 p p p p p p p p ETB

Set OUT signal level

SOH F C M D D - r 1 2 3 4 5 6 7 8 ETB

port 9-16 (dispenser outputs 1-8):

- 1 = Signal level 1
- 0 = Signal level 0
- s = I/O signal by interface
- x = I/O signal blocked

Only possible for ports that are specified as output.

Get OUT signal level

SOH F C M D D - w p p p p p p p p ETB

Answer

SOH A 1 2 3 4 5 6 7 8 p p p p p p p p ETB

Set OUT signal level

SOH	F	C	M	D	D	B	r	1	2	3	4	5	6	7	8	9	10	11	12	13	14	15	16	ETB
-----	---	---	---	---	---	---	---	---	---	---	---	---	---	---	---	---	----	----	----	----	----	----	----	-----

port 1-16 (dispenser output 1-16):

- 1 = Signal level 1
- 0 = Signal level 0
- s = I/O signal by interface
- x = I/O signal blocked

Only possible for ports that are specified as output.

Get OUT signal level

SOH	F	C	M	D	D	B	w	p	p	p	p	p	p	p	p	p	ETB
-----	---	---	---	---	---	---	---	---	---	---	---	---	---	---	---	---	-----

Answer

SOH	A	1	2	3	4	5	6	7	8	9	10	11	12	13	14	15	16	p	p	p	p	p	p	p	ETB
-----	---	---	---	---	---	---	---	---	---	---	----	----	----	----	----	----	----	---	---	---	---	---	---	---	-----

Set software input

SOH	F	C	M	D	F	-	r	1	2	3	4	5	6	7	8	ETB
-----	---	---	---	---	---	---	---	---	---	---	---	---	---	---	---	-----

port 1-8 (dispenser inputs 1-8):

- 1 = Set software input
- 0 = Delete software input
- = Ignore software input
- P = Pulse, run software input once

Only possible for ports whose input signal levels are activated for interface.

Example: Activate a start impulse
(SOH)FCMDF-rP------(ETB)

Set software input

SOH	F	C	M	D	F	B	r	1	2	3	4	5	6	7	8	9	10	11	12	13	14	15	16	ETB
-----	---	---	---	---	---	---	---	---	---	---	---	---	---	---	---	---	----	----	----	----	----	----	----	-----

port 1-16 (dispenser inputs 1-16):

- 1 = Set software input
- 0 = Delete software input
- = Ignore software input
- P = Pulse, run software input once

Only possible for ports whose input signal levels are activated for interface.

A port that was set (1) must be deleted (0) first to activate a function when next setting (1).

Example: Activate a start impulse
(SOH)FCMDFBrP------(ETB)

Set software output

SOH | F | C | M | D | G | - | r | 1 | 2 | 3 | 4 | 5 | 6 | 7 | 8 | ETB

Port 9-16 (dispenser outputs 1-8):

1 = Set software output

0 = Delete software output

Only possible for ports whose output signal levels are activated for interface.

Set software output

SOH | F | C | M | D | G | B | r | 1 | 2 | 3 | 4 | 5 | 6 | 7 | 8 | 9 | 10 | 11 | 12 | 13 | 14 | 15 | 16 | ETB

Port 1-16 (dispenser outputs 1-16):

1 = Set software output

0 = Delete software output

Only possible for ports whose output signal levels are activated for interface.

Set dispenser offset

SOH | F | C | S | D | A | - | r | V | N | N | N | - | - | - | - | ETB

V = prefix of offsets (always +)

NNN = offset value, 3-digit ASCII number in 1/10 mm

Get dispenser offset

SOH | F | C | S | D | A | - | w | p | p | p | p | p | p | p | p | ETB

Answer

SOH | A | V | N | N | N | - | - | - | - | p | p | p | p | p | p | p | p | ETB

Set start signal delay

SOH | F | C | S | D | D | - | r | N | N | N | - | - | - | - | ETB

NNN = start signal delay in 1/100 s (0 ... 999)

Get start signal delay

SOH | F | C | S | D | D | - | w | p | p | p | p | p | p | p | p | ETB

Answer

SOH | A | N | N | N | - | - | - | - | p | p | p | p | p | p | p | p | ETB

Set save start signal

SOH | F | C | S | D | E | - | r | N | - | - | - | - | - | - | ETB

N: 0 = Off
 N: 1 = On

Get save start signal

SOH | F | C | S | D | E | - | w | p | p | p | p | p | p | p | p | ETB

Answer

SOH | A | N | - | - | - | - | - | - | p | p | p | p | p | p | p | p | ETB

Set cancel continuous printing (operating mode)

SOH | F | C | S | D | F | A | r | N | - | - | - | - | - | - | ETB

N: 0 = Off
 N: 1 = On

Get cancel continuous printing (operating mode)

SOH | F | C | S | D | F | A | w | p | p | p | p | p | p | p | p | ETB

Answer

SOH | A | N | - | - | - | - | - | - | p | p | p | p | p | p | p | p | ETB

Dispenser photocell

Get status of dispenser photocell

SOH | F | C | M | B | E | A | w | p | p | p | p | p | p | p | p | ETB

Answer

SOH | A | N | - | - | - | - | - | - | p | p | p | p | p | p | p | p | ETB

N: 0 = no label at photocell
 N: 1 = label at photocell
 The set switching threshold of dispenser photocell is taken into consideration.

8.5 Interface

By means of the following commands the parameters of the serial interface can be set. Note that after sending one of the commands also the host computer changes the corresponding parameter of its interface to allow further communication of host computer-printer. For all interface commands the interface is fixed with x. The following values are allowed:

x = 1 ⇒ COM 1

x = 2 ⇒ COM 2

In all other cases automatically the first serial interface is addressed. In the answers the addressed interface is also returned.

Set all interface parameters

```
SOH F C F F x - r m ; b ; p ; d ; s ETB
```

m = mode (0 = Off, 1 = On, 2 = On, without error message)

b = baud rate (2400, 4800, 9600, 19200, 38400, 115200)

p = parity (n = no parity, e = even parity, o = odd parity)

d = number of data bits (7, 8)

s = number of stop bits (1, 2)

Get all interface parameters

```
SOH F C F F x - w p p p p p p p p ETB
```

Answer

```
SOH A x ; m ; b ; p ; d ; s ; p p p p p p p p ETB
```

Example: activate interface COM1 and set 9600 Baud, no parity, 8 data bits, 2 stop bits
[SOH]FCFF1-r1;9600;n;8;2[ETB]

Interface protocol

There are two different interface protocols available. Usually, SOH = 01_{Hex} and TB = 17_{Hex}. However, there are host computers (e.g. AS/400), which cannot work with these characters. Therefore, you can switch SOH = 5E_{Hex} and ETB = 5F_{Hex}. The host computer must change the corresponding parameter as well.

Set SOH and ETB

```
SOH F C G C - - r N - - - - - ETB
```

N: 0 = SOH = 01_{Hex}, ETB = 17_{Hex}

N: 1 = SOH = 5E_{Hex}, ETB = 5F_{Hex}

Get SOH and ETB

```
SOH F C G C - - W p p p p p p p p ETB
```

Answer

```
SOH A N - - - - - p p p p p p p p ETB
```

N: 0 = SOH = 01_{Hex}, ETB = 17_{Hex}

N: 1 = SOH = 5E_{Hex}, ETB = 5F_{Hex}

N: 2 = other character combination

Data memory

Set data memory

SOH	F	C	G	D	-	-	r	M	-	-	-	-	-	-	ETB
-----	---	---	---	---	---	---	---	---	---	---	---	---	---	---	-----

M: 0 = Off, after receiving FBCA0r or FBDA0r the interface is locked until the end of the print order, i.e. you cannot write more data in the receiving buffer.

M: 1 = Off, after receiving FBCA0r or FBDA0r the interface is locked until the end of the print order, i.e. you cannot write more data in the receiving buffer.

M: 2 = Extended, after starting a print order it is possible to write more data in the receiving buffer. This data is processed during the print, and the next label is prepared.

Get data memory

SOH	F	C	G	D	-	-	W	p	p	p	p	p	p	p	p	ETB
-----	---	---	---	---	---	---	---	---	---	---	---	---	---	---	---	-----

Answer

SOH	A	M	-	-	-	-	-	p	p	p	p	p	p	p	p	ETB
-----	---	---	---	---	---	---	---	---	---	---	---	---	---	---	---	-----

Set reaction to unknown interrogative set

SOH	F	C	G	E	A	-	r	N	-	-	-	-	-	-	ETB
-----	---	---	---	---	---	---	---	---	---	---	---	---	---	---	-----

N = value range between 0 and 3

Get reaction to unknown questions

SOH	F	C	G	E	A	-	w	p	p	p	p	p	p	P	p	ETB
-----	---	---	---	---	---	---	---	---	---	---	---	---	---	---	---	-----

Answer

SOH	A	N	-	-	-	-	-	p	p	p	p	p	p	p	p	ETB
-----	---	---	---	---	---	---	---	---	---	---	---	---	---	---	---	-----

8.6 Network

```
SOH F C L A - - r C 0 A 8 0 0 1 5 ETB
```

All network parameter sets start in the third column with a 'L'. Column 4 shows the identification for the corresponding network parameter. Column 5 can show another sub-identification.

Because the argument size is limited to 8 characters, the IP addresses (IP address, network mask, gateway address) which consist of 32 bit are transmitted in HEX presentation. For all data which is transmitted in HEX presentation (also the MAC address) it is allowed to use capital as well as small letters.

In contrast to the parameter settings of the other interfaces, the settings of the following sets were saved immediately onto Flash, i.e. it is not necessary to save the current set configuration before switching off the printer so the modifications are still available after switching on.

So that the made modifications become active, also without printer Reset it is necessary to transmit a corresponding Z set which effects a Reset of the network devices.

Set IP address (e.g. 192.168.0.21)

```
SOH F C L A - - r C 0 A 8 0 0 1 5 ETB
```

Get IP address

```
SOH F C L A - - w p p p p p p p p p ETB
```

Answer

```
SOH A C 0 A 8 0 0 1 5 p p p p p p p p ETB
```

Set netmask (e.g. 255.255.255.0)

```
SOH F C L B - - r F F F F F F 0 0 ETB
```

Get netmask

```
SOH F C L B - - w F F F F F F 0 0 ETB
```

Answer

```
SOH A F F F F F F 0 0 p p p p p p p p ETB
```

Set Gateway address (e.g. 192.168.0.1)

```
SOH F C L C - - r C 0 A 8 0 0 0 1 ETB
```

Get Gateway address

```
SOH F C L C - - w p p p p p p p p p ETB
```

Answer

```
SOH A C 0 A 8 0 0 0 1 p p p p p p p p ETB
```

Set transmission mode (e.g. auto recognition)

SOH | F | C | L | D | - | - | r | 0 | - | - | - | - | - | - | ETB

0 = auto recognition 3 = 100 MBit/s half duplex
 1 = 10 MBit/s half duplex 4 = 100 MBit/s full duplex
 2 = 10 MBit/s full duplex

Get transmission mode

SOH | F | C | L | D | - | - | w | 0 | - | - | - | - | - | - | ETB

Answer

SOH | A | 0 | - | - | - | - | - | p | p | p | p | p | p | p | p | ETB

Set DHCP support

SOH | F | C | L | E | - | - | r | N | ETB

N: 0 = Off, N: 1 = On

Get DHCP support

SOH | F | C | L | E | - | - | w | p | p | p | p | p | p | p | p | ETB

Answer

SOH | A | N | - | - | - | - | - | p | p | p | p | p | p | p | p | ETB

Assign printer name

SOH | F | C | L | F | - | - | R | N | N | N | N | N | N | N | N | N | N | ETB

N = printer name can consist of max. 11 characters
 [A...Z, a...z, 0...9, -, -]

Get printer name

SOH | F | C | L | F | - | - | w | p | p | p | p | p | p | p | p | ETB

Answer

SOH | A | N | N | N | N | N | N | N | ; | p | p | p | p | p | p | p | p | ETB

Set MAC address (e.g. 00-07-4A-43-19-08)

SOH | F | C | L | M | B | - | r | 0 | 0 | 0 | 7 | 4 | A | - | - | ETB

SOH | F | C | L | M | A | - | r | 4 | 3 | 1 | 9 | 0 | 8 | - | - | ETB

SOH | F | C | L | M | C | - | r | 0 | 0 | 0 | 7 | 4 | A | 1 | 9 | 0 | 8 | ETB

A MAC address has a width of 48 bit and is normally indicated in hexadecimals.

With the B record our identifier of the MAC address can be changed. All our machines start with 00-07-4A as default. This corresponds to the Memory-Pool which the MAC address committee assigned to us to guarantee that the MAC address is world-wide manufacturer-spreading unique.

With the A record any address can be set in our pool.

With the C record any address in our pool and the identification of the MAC address can be set/changed at the same time.

Get MAC address

SOH	F	C	L	M	B	-	w	p	p	p	p	p	p	p	p	p	ETB
-----	---	---	---	---	---	---	---	---	---	---	---	---	---	---	---	---	-----

SOH	F	C	L	M	A	-	w	p	p	p	p	p	p	p	p	p	ETB
-----	---	---	---	---	---	---	---	---	---	---	---	---	---	---	---	---	-----

SOH	F	C	L	M	C	-	w	p	p	p	p	p	p	p	p	p	ETB
-----	---	---	---	---	---	---	---	---	---	---	---	---	---	---	---	---	-----

Answer

SOH	A	0	0	0	7	4	A	-	-	p	p	p	p	p	p	p	ETB
-----	---	---	---	---	---	---	---	---	---	---	---	---	---	---	---	---	-----

SOH	A	4	3	1	9	0	8	-	-	p	p	p	p	p	p	p	ETB
-----	---	---	---	---	---	---	---	---	---	---	---	---	---	---	---	---	-----

SOH	A	0	0	0	7	4	A	4	3	1	9	0	8	p	p	p	p	p	p	p	p	ETB
-----	---	---	---	---	---	---	---	---	---	---	---	---	---	---	---	---	---	---	---	---	---	-----

NTP Server

NTP (Network Time Protocol) is a standardized Internet protocol permitting the synchronization of real-time clocks of network participants. The printer connects itself with a time server and aligns its internal real-time clock every 60 minutes with that of the time server to correct differences.

The address of server (IP address) can be freely configured in the printer. The communication is effected by UDP and the fixed set port 123. The service in the printer is deactivated by transmitting the server address 0.0.0.0.

The time servers work together with the coordinated world time (UTC) and therefore an additional time shift is needed compared to the reference time. For Germany it is e.g. +1 hour.

The current state of the connexion can be queried with a status set.

Set NTP Server IP

SOH	F	C	L	N	I	-	r	N	ETB
-----	---	---	---	---	---	---	---	---	-----

N = X.X.X.X (X = 0 ... 255)

Get NTP Server IP

SOH	F	C	L	N	I	-	w	p	p	p	p	p	p	p	p	p	ETB
-----	---	---	---	---	---	---	---	---	---	---	---	---	---	---	---	---	-----

Answer

SOH	A	N	N	N	N	N	N	N	N	N	p	p	p	p	p	p	p	ETB
-----	---	---	---	---	---	---	---	---	---	---	---	---	---	---	---	---	---	-----

0.0.0.0 deactivates the NTP service

Readout NTP status

SOH F C L N S - w p p p p p p p p ETB

Answer

SOH A N - - - - - - - p p p p p p p p ETB

- N: 0 = Off
- N: 1 = OK
- N: 2 = Error

Set time zone (hour offset)

SOH F C L N Z - r N ETB

N: -12, 12

Get time zone (hour offset)

SOH F C L N Z - w p p p p p p p p ETB

Answer

SOH A N N N N N N N N N p p p p p p p p ETB

Reset Network Device

SOH F C L Z - - r ----- ETB

For this set is no enquiry possible. This set causes modifications made by the transfer of the previous sets to become effective.

8.7 Offset Values

Set Y offset

SOH F C C D - - r V N N N - - - - ETB

V = offset prefix (+ or -)
 NNN = offset value, 3-digit ASCII number in 1/10 mm

Get Y offset

SOH F C C D - - w p p p p p p p p ETB

Answer

SOH A V N N N - - - - p p p p p p p p ETB

Set X offset

SOH F C C E - - r V N N N - - - - ETB

V = offset prefix (+ or -)
 NNN = offset value, 3-digit ASCII number in 1/10 mm

Get X offset

SOH F C C E - - w p P p p p p p p p ETB

Answer

SOH A V N N N - - - - p p p p p p p p ETB

Set tear-off offset

SOH F C C G - - r V N N N - - - - ETB

V = offset prefix (always +)
 NNN = offset value, 3-digit ASCII number in 1/10 mm

Get tear off offset

SOH F C C G - - w p p p p p p p p ETB

Answer

SOH A V N N N - - - - p p p p p p p p ETB

Set dispenser offset

SOH F C S D A - r V N N N - - - - ETB

V = offset prefix (always +)
 NNN = offset value, 3-digit ASCII number in 1/10 mm

Get dispenser offset

SOH F C S D A - w P p p p p p p p ETB

Answer

SOH A V N N N - - - - p p p p p p p p ETB

8.8 Service Functions

Set zero point adjustment (Y value)

SOH	F	C	C	R	-	-	r	V	N	N	N	-	-	-	-	ETB
-----	---	---	---	---	---	---	---	---	---	---	---	---	---	---	---	-----

Get zero point adjustment (Y value)

SOH	F	C	C	R	-	-	w	p	p	p	p	p	p	p	p	p	ETB
-----	---	---	---	---	---	---	---	---	---	---	---	---	---	---	---	---	-----

V: offset prefix (+ or -)

NNN: offset value

3-digit ASCII number in 1/100 mm (-999 ... +999)

Answer

SOH	A	V	N	N	N	-	-	-	-	p	p	p	p	p	p	p	ETB
-----	---	---	---	---	---	---	---	---	---	---	---	---	---	---	---	---	-----

Set zero point adjustment (X value)

SOH	F	C	C	T	-	-	r	V	N	N	N	-	-	-	-	ETB
-----	---	---	---	---	---	---	---	---	---	---	---	---	---	---	---	-----

Get zero point adjustment (X value)

SOH	F	C	C	T	-	-	w	p	p	p	p	p	p	p	p	ETB
-----	---	---	---	---	---	---	---	---	---	---	---	---	---	---	---	-----

V: offset prefix (+ or -)

NNN: offset value

NNN: 3-digit ASCII number in 1/100 mm (-999 ... +999)

Answer

SOH	A	V	N	N	N	-	-	-	-	p	p	p	p	p	p	p	ETB
-----	---	---	---	---	---	---	---	---	---	---	---	---	---	---	---	---	-----

Set Online / Offline

SOH	F	C	M	K	C	-	r	M	-	-	-	-	-	-	-	ETB
-----	---	---	---	---	---	---	---	---	---	---	---	---	---	---	---	-----

M: 0 = Offline Off

M: 1 = Offline On

Get Online / Offline

SOH	F	C	M	K	C	-	w	p	p	p	p	p	p	p	p	ETB
-----	---	---	---	---	---	---	---	---	---	---	---	---	---	---	---	-----

Answer

SOH	A	M	-	-	-	-	-	-	p	p	p	p	p	p	p	ETB
-----	---	---	---	---	---	---	---	---	---	---	---	---	---	---	---	-----

After changing by interface, the display is automatically new initialized (by activated online/offline changing to online indication).

Set reprint action

SOH F C M K D - r N - - - - - ETB

Get reprint action

SOH F C M K D - w p p p p p p p p ETB

N: 0 = complete reprint

N: 1 = empty reprint

Answer

SOH A N - - - - - p p p p p p p p ETB

Set winder output

SOH F C M P - - r N - - - - - ETB

N: 0 = Off

N: 1 = On

Get winder output

SOH R C M P - - W p p p p p p p p ETB

Answer

SOH A N - - - - - p p p p p p p p ETB

Get printhead temperature

SOH F C M C - - w p p p p p p p p ETB

Answer

SOH A N - - - - - p p p p p p p p ETB

NNN = value of temperature, 3-digit ASCII number in degrees

Set transfer ribbon prior warning

SOH F C M L A - r N - - - - - ETB

N: 0 = Off

N: 1 = On

Get transfer ribbon prior warning

SOH F C M L A - w p p p p p p p p ETB

Answer

SOH A N - - - - - p p p P p p p p ETB

Set diameter for transfer ribbon prior warning

SOH F C M L B - r N N N - - - - ETB

NNN = 030 ... 090 diameter in mm

Get transfer ribbon prior warning

SOH F C M L B - w p p p p p p p p ETB

Answer

SOH A N - - - - - p p p p p p p p ETB

Get current transfer ribbon diameter

SOH F C M L C - w - - - - - - - ETB

Answer

SOH A N N N - - - - - p p p p p p p p ETB

Set mode for transfer ribbon prior warning

SOH F C M L D A r N - - - - - - - ETB

N: 0 = Warning

N: 1 = Reduced speed

N: 2 = Error

Get mode for transfer ribbon prior warning

SOH F C M L D A w p p p p p p p p ETB

Answer

SOH A N - - - - - - - p p p p p p p p ETB

Set reduced speed (ribbon prior warning)

SOH F C M L D B r N N N - - - - - ETB

NNN = V_{\min} ... V_{\max} : reduced print speed
(depending on printer type)**Get reduced speed (ribbon prior warning)**

SOH F C M L D B w p p p p p p p p ETB

Answer

SOH A N N N - - - - - p p p p p p p p ETB

Set printhead resistance

SOH	F	C	M	G	-	-	r	N	N	N	N	N	-	-	-	ETB
-----	---	---	---	---	---	---	---	---	---	---	---	---	---	---	---	-----

NNNNN = value of resistance in Ohm.

Get printhead resistance

SOH	F	C	M	G	-	-	w	p	p	p	p	p	p	p	p	ETB
-----	---	---	---	---	---	---	---	---	---	---	---	---	---	---	---	-----

Answer

SOH	A	N	N	N	N	N	-	-	-	p	p	p	p	p	p	p	ETB
-----	---	---	---	---	---	---	---	---	---	---	---	---	---	---	---	---	-----

Set print length correction

SOH	F	C	M	T	-	-	r	V	N	N	N	-	-	-	-	ETB
-----	---	---	---	---	---	---	---	---	---	---	---	---	---	---	---	-----

V: offset prefix (+ or -)

NNN: print length correction value

3-digit ASCII number in 1/10 % (-100 ... +100)

Get print length correction

SOH	F	C	M	T	-	-	w	p	p	p	p	p	p	p	p	ETB
-----	---	---	---	---	---	---	---	---	---	---	---	---	---	---	---	-----

Answer

SOH	A	V	N	N	N	-	-	-	-	p	p	p	p	p	p	p	ETB
-----	---	---	---	---	---	---	---	---	---	---	---	---	---	---	---	---	-----

Set custom logo

SOH	F	C	N	R	A	-	r	N	-	-	-	-	-	-	ETB
-----	---	---	---	---	---	---	---	---	---	---	---	---	---	---	-----

N: 0 = Off

N: 1 = On

Get custom logo

SOH	F	C	N	R	A	-	w	p	p	p	p	p	p	p	p	ETB
-----	---	---	---	---	---	---	---	---	---	---	---	---	---	---	---	-----

Answer

SOH	A	N	-	-	-	-	-	-	p	p	p	p	p	p	p	ETB
-----	---	---	---	---	---	---	---	---	---	---	---	---	---	---	---	-----

Paper counter

The paper counter (kilometre value) of printer as well as of printhead can only be enquired by interface and not reset to 0.

Get paper counter of printer

SOH	F	C	H	A	-	-	w	p	p	p	p	p	p	p	p	p	ETB
-----	---	---	---	---	---	---	---	---	---	---	---	---	---	---	---	---	-----

Answer

SOH	A	N	N	N	N	N	N	N	N	N	p	p	p	p	p	p	p	ETB
-----	---	---	---	---	---	---	---	---	---	---	---	---	---	---	---	---	---	-----

Get paper counter of printhead

SOH	F	C	H	B	-	-	w	p	p	p	p	p	p	p	p	ETB
-----	---	---	---	---	---	---	---	---	---	---	---	---	---	---	---	-----

Answer

SOH	A	N	N	N	N	N	N	N	N	N	p	p	p	p	p	p	p	ETB
-----	---	---	---	---	---	---	---	---	---	---	---	---	---	---	---	---	---	-----

NNNNNNNN = kilometer value of printer and/or printhead in meters
(e.g. '00000123' = 123 m)

8.9 Date & Time**Set date**

SOH	F	C	I	A	-	-	r	D	D	M	O	Y	Y	D	W	ETB
-----	---	---	---	---	---	---	---	---	---	---	---	---	---	---	---	-----

DD = day of month

MO = month

YY = year

DW = day of week ('00' = Sunday)

Get date

SOH	F	C	I	A	-	-	w	p	p	p	p	p	p	p	p	ETB
-----	---	---	---	---	---	---	---	---	---	---	---	---	---	---	---	-----

Answer

SOH	A	D	D	M	O	Y	Y	D	W	p	p	p	p	p	p	p	ETB
-----	---	---	---	---	---	---	---	---	---	---	---	---	---	---	---	---	-----

Set time

SOH	F	C	I	B	-	-	r	H	H	M	I	S	S	A	M	ETB
-----	---	---	---	---	---	---	---	---	---	---	---	---	---	---	---	-----

HH = hours

MI = minutes

SS = seconds

AM = mode ('am' = 12 hours mode AM, 'pm' = 12 hours mode PM,

'—' = 24 hours mode)

Get time

SOH	F	C	I	B	-	-	w	p	p	p	p	p	p	p	p	ETB
-----	---	---	---	---	---	---	---	---	---	---	---	---	---	---	---	-----

Answer

SOH	A	H	H	M	I	S	S	A	M	p	p	p	p	p	p	p	ETB
-----	---	---	---	---	---	---	---	---	---	---	---	---	---	---	---	---	-----

Time zone settings

Set time zone

```
SOH F C I K - - r Rn / Cn ETB
```

Rn = geographical region

Cn = city/area



NOTICE!

The configurable regions/cities can be read using the following two command.

Get zone settings

```
SOH F C I K - - w p p p p p p p p ETB
```

Answer

```
SOH A Rn / Cn ; p p p p p p p p ETB
```

Get the list of available geographical regions

```
SOH F C I K A - w ETB
```

Answer

```
SOH A Rn ETB
```

List; an answer set is returned for each available geographic region.

Get the list of available cities/areas in a geographic region

```
SOH F C I K B - w Rn ETB
```

Rn = geographic region

Answer

```
SOH A Cn ETB
```

List; an answer set is returned for each city/area.

8.10 Password

Set password

SOH	F	C	K	A	-	-	r	N	N	N	N	-	-	-	-	ETB
-----	---	---	---	---	---	---	---	---	---	---	---	---	---	---	---	-----

NNNN = input of password
4-digit ASCII number in mm (0000 ... 9999)

Get password

SOH	F	C	K	A	-	-	w	p	p	p	p	p	p	p	p	p	ETB
-----	---	---	---	---	---	---	---	---	---	---	---	---	---	---	---	---	-----

Answer

SOH	A	N	N	N	N	-	-	-	-	p	p	p	p	p	p	p	ETB
-----	---	---	---	---	---	---	---	---	---	---	---	---	---	---	---	---	-----

Set function group

SOH	F	C	K	B	-	-	r	A	B	C	D	E	-	-	-	ETB
-----	---	---	---	---	---	---	---	---	---	---	---	---	---	---	---	-----

A: Function menu
0 = password Off
1 = password On

B: CF card
0 = password Off
1 = standard directory allowed
2 = password On

C: not assigned

D: Printer guiding
0 = password Off
1 = not assigned
2 = Password On

E: Favorites menu
0 = password Off
1 = password On

Get function group

SOH	F	C	K	B	-	-	w	p	p	p	p	p	p	p	p	ETB
-----	---	---	---	---	---	---	---	---	---	---	---	---	---	---	---	-----

Answer

SOH	A	a	b	c	d	e	-	-	-	p	p	p	p	p	p	p	ETB
-----	---	---	---	---	---	---	---	---	---	---	---	---	---	---	---	---	-----

Set password function menu

SOH	F	C	K	D	A	-	r	N	N	N	N	-	-	-	ETB
-----	---	---	---	---	---	---	---	---	---	---	---	---	---	---	-----

NNNN = input of password
4-digit ASCII number in mm (0000 ... 9999)

Get password function menu

SOH	F	C	K	D	A	-	w	p	p	p	p	p	p	p	ETB
-----	---	---	---	---	---	---	---	---	---	---	---	---	---	---	-----

Answer

SOH	A	N	N	N	N	-	-	-	p	p	p	p	p	p	ETB
-----	---	---	---	---	---	---	---	---	---	---	---	---	---	---	-----

Set password favorites menu

SOH	F	C	K	D	B	-	r	N	N	N	N	-	-	-	ETB
-----	---	---	---	---	---	---	---	---	---	---	---	---	---	---	-----

NNNN = input of password
4-digit ASCII number in mm (0000 ... 9999)

Enquire password favorites menu

SOH	F	C	K	D	B	-	w	p	p	p	p	p	p	p	ETB
-----	---	---	---	---	---	---	---	---	---	---	---	---	---	---	-----

Answer

SOH	A	N	N	N	N	-	-	-	p	p	p	p	p	p	ETB
-----	---	---	---	---	---	---	---	---	---	---	---	---	---	---	-----

Set password memory card

SOH	F	C	K	D	C	-	r	N	N	N	N	-	-	-	ETB
-----	---	---	---	---	---	---	---	---	---	---	---	---	---	---	-----

NNNN = input of password
4-digit ASCII number in mm (0000 ... 9999)

Get password memory card

SOH	F	C	K	D	C	-	w	p	p	p	p	p	p	p	ETB
-----	---	---	---	---	---	---	---	---	---	---	---	---	---	---	-----

Answer

SOH	A	N	N	N	N	-	-	-	p	p	p	p	p	p	ETB
-----	---	---	---	---	---	---	---	---	---	---	---	---	---	---	-----

Set password printing manually

SOH	F	C	K	D	D	-	r	N	N	N	N	-	-	-	ETB
-----	---	---	---	---	---	---	---	---	---	---	---	---	---	---	-----

NNNN = input of password
4-digit ASCII number in mm (0000 ... 9999)

Get printing manually

SOH	F	C	K	D	D	-	w	p	p	p	p	p	p	p	ETB
-----	---	---	---	---	---	---	---	---	---	---	---	---	---	---	-----

Answer

SOH	A	N	N	N	N	-	-	-	p	p	p	p	p	p	ETB
-----	---	---	---	---	---	---	---	---	---	---	---	---	---	---	-----

8.11 Compact Flash Card

Save a label onto Compact Flash card

SOH F M A O - - r P ETB

- O: In case a label with the entered name exists already then, the label is overwritten without an enquiry. If you enter another value as 0, an enquiry appears demanding if you want to overwrite.
- P: File name of the label which is to save. Drive and path name are optional, i.e. the file name is allowed to have more than 8 characters but is limited to 79.

Load a file from Compact Flash card

SOH F M B - - - r P ETB

- P: File name of the layout which is to load. Drive and path name are optional, i.e. the file name is allowed to have more than 8 characters but is limited to 79.

Delete a layout from Compact Flash card

SOH F M C - - - r P ETB

- P: File name of the layout which is to delete. Drive and path name are optional, i.e. the file name is allowed to have more than 8 characters but is limited to 79.

Format Compact Flash card

SOH F M D - - - r P ETB

- P: Optional drive identification with colon (e.g. A:).
In case no drive is indicated, then the currently selected is formatted.

Readout contents of CF card

SOH F M G O - - r P ETB

- O: In case O is indicated, no error messages are displayed at the printing display e.g. if no card is inserted.
- P: Optional drive identification with colon (e.g. A:).
In case no drive is indicated, then the currently selected is read out.

Answer

SOH File name/directory name ETB

- A list of all file entries is indicated; each entry is included in (SOH) and (ETB).

Readout free memory space

SOH	F	M	H	O	-	-	w	X	p	p	p	p	p	p	p	p	ETB
-----	---	---	---	---	---	---	---	---	---	---	---	---	---	---	---	---	-----

O: In case O is indicated, no error messages are displayed at the printing display e.g. if no card is inserted.

X = Drive [A,B] (optional)

Answer

SOH	A	X	n	n	n	n	-	-	-	p	p	p	p	p	p	p	ETB
-----	---	---	---	---	---	---	---	---	---	---	---	---	---	---	---	---	-----

X = Drive [A,B]

n = Memory space in KB

Create directory

SOH	F	M	I	O	-	-	r	P	ETB
-----	---	---	---	---	---	---	---	---	-----

O: In case a label with the entered name already exists, then it is overwritten without an enquiry.

If you enter another value as O, an enquiry appears demanding if you want to overwrite.

P = Drive and path indication

Delete directory

SOH	F	M	J	-	-	-	r	P	ETB
-----	---	---	---	---	---	---	---	---	-----

P = Drive and path indication

**NOTICE!**

The current directory cannot be deleted.

Delete directory path

SOH	F	M	J	A	-	-	-	r	P	ETB
-----	---	---	---	---	---	---	---	---	---	-----

Deletes the indicated directory including all containing sub-directories and files.

Change standard directory

SOH	F	M	K	-	-	-	r	P	ETB
-----	---	---	---	---	---	---	---	---	-----

P = Drive and path indication

Readout current directory

SOH	F	M	K	-	-	-	w	ETB
-----	---	---	---	---	---	---	---	-----

Answer

SOH	A	P	ETB
-----	---	---	-----

P = Current directory

Set standard directory for file selection via I/O

SOH | F | M | K | B | - | - | r | N | ETB

N = directory path

Get standard directory for file selection via I/O

SOH | F | M | K | B | - | - | w | p | p | p | p | p | p | p | p | ETB

Antwort

SOH | A | N | - | - | - | - | - | - | p | p | p | p | p | p | p | p | ETB

Transfer file from printing system

SOH | F | M | L | - | - | - | w | P | ETB

P: File name of file which is to transfer. Drive name and path name are optional, i.e. the file name is allowed to have more than 8 characters but is limited to 79.

Answer

SOH | A | F | * | S | ETB | Data

F = File name
S = File size in Byte
Data = Binary data

Enquiry if the file exists

SOH | F | M | M | - | - | - | w | P | ETB

P: File name of file which is to transfer. Drive name and path name are optional, i.e. the file name is allowed to have more than 8 characters but is limited to 79.

Answer

SOH | A | X | P | ETB | Daten

X: 0 = File does not exist
1 = File exists
P = File name

Readout size of Compact Flash card

SOH | F | M | P | O | - | - | w | X | ETB

O: In case O is indicated, no error messages are displayed at the printing display e.g. if no card is inserted.
X: Drive [A,B] (optional)

Answer

SOH | A | D | n | n | n | n | - | - | - | X | ETB

X = Drive [A,B]
n = Memory in KB
D = enquired drive

Get drive status

SOH	F	M	S	-	-	-	w	X	ETB
-----	---	---	---	---	---	---	---	---	-----

X - Drive [A,B]

Answer

SOH	A	X	S	ETB
-----	---	---	---	-----

X = Drive [A,B]

S = Status

0: no storage medium

1: not formatted

2: ready

3: not determinable

8.12 Printing

Set number of lines (n-digits)

```
SOH F B A A - - r N ETB
```

N = number of lines in ASCII (1, 10, 100, ...)

Get number of lines

```
SOH F B A A - - w p p p p p p p p ETB
```

Answer

```
SOH A N - - - - - p p p p p p p p ETB
```

Start/Stop Command

In addition to the actual start/stop command, the print order can also be interrupted via the parameter/remote record.

```
SOH F D - - - - r N - - - - - ETB
```

N: 0 = stop printing

N: 1 = continue printing

N: 2 = cancel print order if it is already stopped

Reset error

Reset error

```
SOH F C M H - - r N N N N - - - - ETB
```

NNNN = current error ID or '9999'

Get error

```
SOH F C M H - - w p p p p p p p p ETB
```

Answer

```
SOH A N N N N 0 0 0 0 p p p p p p p p ETB
```

Get error ID and error text

```
SOH F C M H A - w p p p p p p p p ETB
```

Answer

```
SOH A N N N N ; error text ; p p p p p p p p ETB
```

Item number of print order

By means of this command the Host computer can enquire following item numbers:

Total number of current print order

SOH	F	B	B	A	-	-	w	p	p	p	p	p	p	p	p	ETB
-----	---	---	---	---	---	---	---	---	---	---	---	---	---	---	---	-----

Number of labels which are still to print

SOH	F	B	B	B	-	-	w	p	p	p	p	p	p	p	p	ETB
-----	---	---	---	---	---	---	---	---	---	---	---	---	---	---	---	-----

Number of already printed labels

SOH	F	B	B	C	-	-	w	p	p	p	p	p	p	p	p	ETB
-----	---	---	---	---	---	---	---	---	---	---	---	---	---	---	---	-----

At the end of one of these commands the printer returns the corresponding number as ASCII value (4 res. 5 digits) in the answer set.

Answer

SOH	A	N	N	N	N	-	-	-	-	p	p	p	p	p	p	p	ETB
-----	---	---	---	---	---	---	---	---	---	---	---	---	---	---	---	---	-----

With this set it is also possible to transmit the item number of print order to the printer.

Item number of print order

SOH	F	B	B	A	-	-	r	N	N	N	N	N	-	-	-	ETB
-----	---	---	---	---	---	---	---	---	---	---	---	---	---	---	---	-----

NNNNN = 5 digits item number of order

Start printing

SOH	F	B	C	-	-	-	r	S	-	-	-	-	-	-	-	ETB
-----	---	---	---	---	---	---	---	---	---	---	---	---	---	---	---	-----

This command starts with the print order which is set in the printer. The current parameters such as print mode, speed, initialization etc. are used.

S = x: sorted (e.g. pages 1-5, then again 1-5 etc. are printed)

S = 1: unsorted (page 1 is printed x times, then page 2 x times, etc.)

SOH	F	B	D	-	-	-	r	S	-	-	-	-	-	-	-	ETB
-----	---	---	---	---	---	---	---	---	---	---	---	---	---	---	---	-----

Start printing (see above) but without tear off offset.

SOH	F	B	E	-	-	-	r	n	n	n	n	n	n	n	n	ETB
-----	---	---	---	---	---	---	---	---	---	---	---	---	---	---	---	-----

With this command the printjob identifier which appears in "printing" res. "stopped" window is assigned to a print order. If only blanks are transmitted, then the printjob identifier is deleted and the display shows "noname".

Initialization of page handling

SOH	F	B	F	-	-	-	r	ETB
-----	---	---	---	---	---	---	---	-----

Selection of current page

SOH	F	B	G	-	-	-	r	P	ETB
-----	---	---	---	---	---	---	---	---	-----

P = current page number [1 ... 9]

Select order of pages to be printed

SOH	F	B	H	-	-	-	r	P ₁	P ₂	P ₃	ETB
-----	---	---	---	---	---	---	---	----------------	----------------	----------------	-----

P₁; P₂;...= pages to be printed

Generation of page without print start

SOH	F	B	I	-	-	-	r	S	ETB
-----	---	---	---	---	---	---	---	---	-----

With this command the corresponding page is only generated, i.e. no print start signal is sent.

S = x: sorted (e.g. pages 1-5, then again 1-5 etc. are printed)

S = 1: unsorted (page 1 is printed x times, then page 2 x times, etc.)

Feed**Parameter set to release a feed**

SOH	F	E	-	-	-	-	r	-	-	-	-	-	-	-	-	-	-	-	-	ETB
-----	---	---	---	---	---	---	---	---	---	---	---	---	---	---	---	---	---	---	---	-----

Test print**Parameter set to release a test print**

SOH	F	F	-	-	-	-	r	-	-	-	-	-	-	-	-	-	-	-	-	ETB
-----	---	---	---	---	---	---	---	---	---	---	---	---	---	---	---	---	---	---	---	-----

Status print**Parameter set to print a status print**

SOH	F	C	M	Q	-	-	r	N	-	-	-	-	-	-	-	-	-	-	-	ETB
-----	---	---	---	---	---	---	---	---	---	---	---	---	---	---	---	---	---	---	---	-----

N: 0 = printer settings

N: 1 = bar codes

N: 2 = fonts

Cancel print orders**Parameter set to cancel all active print orders**

SOH	F	G	A	-	-	-	r	N	-	-	-	-	-	-	-	-	-	-	-	ETB
-----	---	---	---	---	---	---	---	---	---	---	---	---	---	---	---	---	---	---	---	-----

N: - = Cancel active print orders and delete all label data

N: 1 = Cancel active print orders and receive new label data

With the execution of this command:

- possible upcoming errors are confirmed
- possible upcoming customized entries are cancelled

8.13 Emulation**Set emulation**

SOH	F	Z	-	-	-	-	r	N	-	-	-	-	-	-	-	-	-	-	-	ETB
-----	---	---	---	---	---	---	---	---	---	---	---	---	---	---	---	---	---	---	---	-----

N: 0 = CVPL (Carl Valentin Programming Language)

N: 1 = ZPL II® (Zebra Programming Language)

Get emulation

SOH	F	Z	-	-	-	-	w	p	p	p	p	p	p	p	p	p	p	p	p	ETB
-----	---	---	---	---	---	---	---	---	---	---	---	---	---	---	---	---	---	---	---	-----

Answer

SOH	A	N	-	-	-	-	-	-	p	p	p	p	p	p	p	p	p	p	p	ETB
-----	---	---	---	---	---	---	---	---	---	---	---	---	---	---	---	---	---	---	---	-----

9 Parameter Sets for Options

9.1 WLAN (Wireless Local Area Network)

Get connection status

SOH F C W C - - w p p p p p p p p ETB

Answer

SOH A N i p p p p p p p p ETB

N: 0 = not connected

N: 1 = connected

Set DHCP support

SOH F C W D - - r x ETB

x: 0 = Off

x: 1 = On

Get DHCP support

SOH F C W D - - w p p p p p p p p ETB

Answer

SOH A x i p p p p p p p p ETB

Set encryption type

SOH F C W E - - r x ETB

x: 0 = Off

x: 1 = WEP64

x: 2 = WEP128

x: 3 = WPA

x: 4 = WPA2

Get encryption type

SOH F C W E - - w p p p p p p p p ETB

Answer

SOH A x ; p p p p p p p p ETB

Get MAC address

SOH F C W F - - w p p p p p p p p ETB

Answer

SOH A N ; p p p p p p p p ETB

N: Character string

Set Gateway address

SOH F C W G - - r x ETB

x: Format X.X.X.X

X: 0 ... 255

Get Gateway address

SOH F C W G - - w p p p p p p p p ETB

Answer

SOH A x ; p p p p p p p p ETB

Set IP address

SOH F C W I - - r x ETB

x: Format X.X.X.X

X: 0 ... 255

Set IP address

SOH F C W I - - w p p p p p p p p ETB

Answer

SOH A x ; p p p p p p p p ETB

**Example
Set IP address****Set IP address (e.g. 192.168.1.21)**

SOH F C W I - - r 192 . 168 . 1 . 21 ETB

x = 192.168.1.21

Get IP address

SOH F C W I - - w p p p p p p p p ETB

Answer

SOH A 1 9 2 . 1 6 8 . 1 . 2 1 ; p p p p p p p p ETB

Set WPA/WPA2 key

SOH F C W K - - r x ETB

x = Hex string, 64 characters or ASCII, max. 63 characters

Answer

SOH A x ; ETB

Set netmask

SOH F C W M - - r x ETB

x: Format X.X.X.X

X: 0 ... 255

Get netmask

SOH F C W M - - w p p p p p p p p ETB

Answer

SOH A x ; p p p p p p p p ETB

Get server port

SOH F C W P - - w p p p p p p p p ETB

Answer

SOH A x ; p p p p p p p p ETB

x: Port number 1 ... 65535

Get a new configuration from WLAN module and transfer to the printer

SOH F C W R - - r p p p p p p p p ETB

Answer

SOH A N ; p p p p p p p p ETB

N: OK (WLAN module connected)

N: Error (WLAN module not connected)

Set SSID (Service Set Identifier)

SOH F C W S - - r x ETB

x = Character string

Get SSID identification

SOH F C W S - - w p p p p p p p p ETB

Answer

SOH A x ; p p p p p p p p ETB

Set WEP64 key

SOH F C W V - - r x ETB

x = Hex string, 10 characters

Set WEP128 key

SOH F C W W - - r x ETB

x = Hex string, 26 characters

Save settings and restart of WLAN module

SOH F C W X - - r - - - - - - - - ETB

Answer

SOH A N i p p p p p p p p ETB

N: OK (WLAN module connected)

N: Error (WLAN module not connected)

Set high speed data connection

SOH F C W H - - r x ETB

This setting is specified at the printer and if an active connection to the WLAN module exists, in the WLAN module, too. Subsequently the printer is again started.

x: 0 = Normal speed (115200 baud, no handshake)

x: 1 = High speed (921600 baud (adjustable),
RTS/CTS handshake)**Get high speed data connection**

SOH F C W H - - w p p p p p p p p ETB

Answer

SOH A x p p p p p p p p ETB

Set high speed baud rate

SOH F C W B - - r b ETB

This setting is specified at the printer and if an active connection to the WLAN module exists, in the WLAN module, too. Subsequently the printer is again started.

b = baud rate (115200, 230400, 460800, 921600)

Get high speed baud rate

SOH F C W B - - w p p p p p p p p ETB

Answer

SOH A b p p p p p p p p ETB

9.2 Label Applicator

Set operating mode

SOH | F | C | P | A | - | - | r | N | - | - | - | - | - | - | - | ETB

- N = 0 – Off
- N = 1 – Stamp on
- N = 2 – Blow on
- N = 3 – Roll on

Get operating mode

SOH | F | C | P | A | - | - | w | p | p | p | p | p | p | p | p | ETB

Answer

SOH | A | N | - | - | - | - | - | - | p | p | p | p | p | p | p | p | ETB

N = Current operating mode (see above)

Set application mode

SOH | F | C | P | B | - | - | r | N | - | - | - | - | - | - | - | ETB

- N = 0 – Print-Apply
- N = 1 – Apply-Print

Get application mode

SOH | F | C | P | B | - | - | w | p | p | p | p | p | p | p | p | ETB

Answer

SOH | A | N | - | - | - | - | - | - | p | p | p | p | p | p | p | p | ETB

N = Current application mode (see above)

Set support delay On

SOH | F | C | P | C | - | - | r | N | N | N | N | - | - | - | - | ETB

NNNN = Delay time in ms [0 ... 2500]

Get support delay On

SOH | F | C | P | C | - | - | w | p | p | p | p | p | p | p | p | ETB

Answer

SOH | A | N | N | N | N | - | - | - | - | p | p | p | p | p | p | p | p | ETB

NNNN = Current support delay On (see above)

Set support delay Off

SOH F C P D - - r N N N N - - - - ETB

NNNN = Delay time in ms [0 ... 2500]

Get support delay Off

SOH F C P D - - w p p p p p p p p ETB

Answer

SOH A N N N N - - - - p p p p p p p p ETB

NNNN = Current support delay Off (see above)

Set vacuum control

SOH F C P E - - r N - - - - - - - ETB

N = 0 – Off

N = 1 – On

Get vacuum control

SOH F C P E - - w p p p p p p p p ETB

Answer

SOH A N - - - - - - - p p p p p p p p ETB

N = current vacuum control (see above)

Set blow time

SOH F C P F - - r N N N N - - - - ETB

NNNN = Blow time in ms [0 ... 2500]

Get blow time

SOH F C P F - - w p p p p p p p p ETB

Answer

SOH A N N N N - - - - - p p p p p p p p ETB

NNNN = current blow time (see above)

Set waiting position (blow on & apply print)

SOH F C P G - - r N - - - - - - - ETB

N = 0 – Up

N = 1 – Down

Get waiting position (blow on & apply-print)

SOH F C P G - - w p p p p p p p p ETB

Answer

SOH A N - - - - - - - p p p p p p p p ETB

N = current waiting position (see above)

Set roll-on time

SOH	F	C	P	H	-	-	r	N	N	N	N	-	-	-	-	ETB
-----	---	---	---	---	---	---	---	---	---	---	---	---	---	---	---	-----

NNNN = Roll-on time in ms [0 ... 5000]

Get roll-on time

SOH	F	C	P	H	-	-	w	p	p	p	p	p	p	p	p	ETB
-----	---	---	---	---	---	---	---	---	---	---	---	---	---	---	---	-----

Answer

SOH	A	N	N	N	N	-	-	-	-	p	p	p	p	p	p	p	ETB
-----	---	---	---	---	---	---	---	---	---	---	---	---	---	---	---	---	-----

NNNN = Current roll-on time (see above)

Get applicator inputs

SOH	F	C	P	I	-	-	w	p	p	p	p	p	p	p	p	ETB
-----	---	---	---	---	---	---	---	---	---	---	---	---	---	---	---	-----

Answer

SOH	A	N ₁	N ₂	N ₃	N ₄	N ₅	-	-	-	p	p	p	p	p	p	p	ETB
-----	---	----------------	----------------	----------------	----------------	----------------	---	---	---	---	---	---	---	---	---	---	-----

N₁N₂N₃N₄N₅ = Current state of applicator input

- N₁ = 1 - Pre-dispense key pressed
- N₂ = 1 - Pad in final position up
- N₃ = 1 - Pad in final position down
- N₄ = 1 - Compressed air available
- N₅ = 1 - Vacuum at pad available

Set applicator outputs

SOH	F	C	P	J	-	-	r	N ₁	N ₂	N ₃	N ₄	N ₅	N ₆	N ₇	-	ETB
-----	---	---	---	---	---	---	---	----------------	----------------	----------------	----------------	----------------	----------------	----------------	---	-----

- N₁ = 1 - Move pad downwards
- N₂ = 1 - Move pad upwards
- N₃ = 1 - not assigned
- N₄ = 1 - not assigned
- N₅ = 1 - Blowing air On
- N₆ = 1 - Supporting air On
- N₇ = 1 - Vacuum (pad) On

Get applicator outputs

SOH	F	C	P	J	-	-	w	p	p	p	p	p	p	p	p	ETB
-----	---	---	---	---	---	---	---	---	---	---	---	---	---	---	---	-----

Answer

SOH	A	N ₁	N ₂	N ₃	N ₄	N ₅	N ₆	N ₇	-	p	p	p	p	p	p	p	ETB
-----	---	----------------	----------------	----------------	----------------	----------------	----------------	----------------	---	---	---	---	---	---	---	---	-----

N₁N₂N₃N₄N₅N₆N₇ = Current state of applicator outputs (see above)

Set cleaning time

SOH F C P K - - r N N N N - - - - ETB

NNNN = Cleaning time in ms [0 ... 2500]

Get cleaning time

SOH F C P K - - w p p p p p p p p ETB

Answer

SOH A N N N N - - - - p p p p p p p p ETB

NNNN = Current cleaning time (see above)

Set timeout hub

SOH F C P L - - r N N N N - - - - ETB

NNNN = Moving up and down of pad in ms [0 ... 5000]

Get timeout hub

SOH F C P L - - w p p p p p p p p ETB

Answer

SOH A N N N N - - - - P p p p p p p p ETB

Set pressure control

SOH F C P M - - r N - - - - - - ETB

N = 0 – Off

N = 1 – On

Get pressure control

SOH F C P M - - w p p p p p p p p ETB

Answer

SOH A N - - - - - - - p p p p p p p p ETB

N = Current pressure control (see above)

Set pressure time

SOH F C P N - - r N N N N - - - - ETB

NNNN = Pressure time in ms [0 ... 5000]

Get pressure time

SOH F C P N - - w p p p p p p p p ETB

Answer

SOH A N N N N - - - - p p p p p p p p ETB

NNNN = Current pressure time

Set vacuum delay On

SOH F C P O - - r N N N N - - - - ETB

NNNN = Delay time in ms [0 ... 2500]

Get vacuum delay On

SOH F C P O - - w p p p p p p p p ETB

Answer

SOH A N N N N - - - - p p p p p p p p ETB

NNNN = Current vacuum delay (see above)

Set vacuum delay Off

SOH F C P P - - r N N N N - - - - ETB

NNNN = Delay time in ms [0 ... 2500]

Get vacuum delay Off

SOH F C P P - - w p p p p p p p p ETB

Answer

SOH A N N N N - - - - p p p p p p p p ETB

NNNN = Current vacuum delay (see above)

Set brake valve delay (quick apply)

SOH F C P Q - - r N N N N - - - - ETB

NNNN = Delay time in ms [0 ... 2500]

Get brake valve delay (quick apply)

SOH F C P Q - - w p p p p p p p p ETB

Answer

SOH A N N N N - - - - p p p p p p p p ETB

NNNN = Current vacuum delay (see above)

Set transverse axis

SOH F C P R - - r N - - - - - - ETB

N: 0 = Off
 N: 1 = On

Get transverse axis

SOH F C P R - - w p p p p p p p p ETB

Answer

SOH A N - - - - - - p p p p p p p p ETB

Set application signal

SOH F C P S - - r N - - - - - - ETB

N: 0 = Off
 N: 1 = Print position
 N: 2 = Apply position

Get application signal

SOH F C P S - - w p p p p p p p p ETB

Answer

SOH A N - - - - - - p p p p p p p p ETB

Set delay lower end position

SOH F C P U - - r N N N N - - - - ETB

NNNN = Delay time in ms [0 ... 1000]

Get delay lower end position

SOH F C P U - - w p p p p p p p p ETB

Answer

SOH A N N N N - - - - p p p p p p p p ETB

NNNN = Current delay time (see above)

10.1 Autostatus

The printers are equipped with an auto status function, i.e. in certain operating modes the printer actively sends the corresponding status. This can be enquired by the serial interface.

To activate the auto status, the host computer must send the following command to the printer:

SOH	G	1. Byte	2. Byte	ETB
-----	---	---------	---------	-----

Each of the below indicated messages which is observed and sent by the printer must be transmitted with a set Bit (see table below 1. Byte and 2. Byte) to the printer by means of auto state function. The printer sends after each performed condition the corresponding message (answer) to the host computer.

The following messages are provided:

1 Start of generation

2 End of generation

The printer sends this state in case data for a complete label was generated. The test print was not taken into consideration. For counters/date variables the printer sends for each label a status cycle (start, end).

3 Start of printing

4 End of printing

The start of the print is sent in case the generated data is send. The end of the print is sent in case the print of the label is finished, and the motor has stopped.

5 Start of cutting

6 End of cutting

This status describes the cutting. It can be checked for timeout and the end of the cut movement → error.

7 Start of feeding

8 End of feeding

This status is sent in case an additional feeding (dispenser, cutter, tear off) is released.

9 Start of a print order

10 End of print order

This status signalizes the start and end of a complete print order (1...99999 labels). This status is active in all operating modes.

11 Error

This status message is sent in case an error occurs.

12 Printing stopped

This message is sent if the printing is stopped.

13 Printing resumed

This message is sent if the printing is resumed.

The printer sends the auto status in the following format to the host computer:

SOH	G	1. Byte	2. Byte	ETB
-----	---	---------	---------	-----

1. Byte

- | | |
|------------------------------|------------------------|
| 8. Bit = start of generation | 4. Bit = start cutting |
| 7. Bit = end of generation | 3. Bit = end of cut |
| 6. Bit = start printing | 2. Bit = start feeding |
| 5. Bit = end of print | 1. Bit = always 0 |

2. Byte

- | | |
|-------------------------------|---------------------------|
| 8. Bit = end of label feed | 4. Bit = free |
| 7. Bit = start of print order | 3. Bit = printing stopped |
| 6. Bit = end of print order | 2. Bit = print resumed |
| 5. Bit = error | 1. Bit = always 0 |



HINWEIS!

Bit 1 must be in 1. Byte and 2. Byte always 0, otherwise the printer possibly could recognize SOH or ETB.

At the status message of the printer to the host computer always at least 1 Bit is set. However, it could be occurred that several Bits are set at the same time.

Regarding the status demand of the host computer to the printer it is also possible that several Bits are set at the same time.

The auto status demand is saved in the printer, i.e. it is set to 0 after switching off/on. Therefore, it is necessary to demand it anew after each time the printer is switched on.

Example

The printer should observe the start of a print order. For this the host computer sends the following demand to the printer.

SOH	G	00000000	01000000	ETB
-----	---	----------	----------	-----

After the condition is fulfilled (= start of the print order) the printer sends the following message to the host computer:

SOH	G	00000000	01000000	ETB
-----	---	----------	----------	-----

Regarding the contents the answer corresponds always to the format set.

11 Monitored Printing

This protocol replaces the outdated Autostatus. In contrary to the Autostatus, this is not a binary protocol but a text-based protocol sending the commands as English clear text. The advantage is a fast and simple error tracing and development. The disadvantage of a larger data volume plays nowadays a smaller role.

11.1 Short Introduction

To activate monitored printing:

(SOH)FHM---rSE(ETB)

(SOH)FHA---r2(ETB)

11.2 Parameter Sets (Host – Printer)

Formatting: # - SOH * - ETB

Command: Set monitoring mode.

Syntax: #FHM---rSEPnnnCnFn*

Example: #FHM---rSP10E*

Description: Activates the forwarding of certain events to the server. The results are:

S - (start/stop): print start, print end, stop printing, continue printing, cancel printing.

E – (error): Error occurred, error confirmed.

C – (photocell): Activates the photocell test (n=1)/disable (n=0)

F – Activates the encoder profile (n=1)/disable (n=0)

P – (progress): Print progress, indicates the number of already printed labels. In standard case, the interval between two events is a label. If a number behind the flag is indicated, an event every *nnn* labels is released (see example). With column printing the event is released, as soon as the entered interval was reached or exceeded for the first time (example: 3 columns, interval 4, 20 labels in total. Event at label 6,9,12 and 18).

Command: Activate, disable the monitoring.

Syntax: #FHA---rn*

Example: #FHA---r2*

Description: activated, deactivates the monitoring (n=[0,2]);

,0' – enables the monitoring after completion of print order,

,1' – reserved

,2' – activates the monitoring for the current port.

11.3 Direct Enquiry

Command: Requests print status.

Syntax: #FHS---r*

Example: #FHS---r*

Description: Invites the client to send the status.

Command: User command to the sender of print order.

Syntax: #FHU---rDaten*

Example: #FHU---rSE*

Description: Sends #Data* to the sender of print order.
Max 100 characters.

11.4 Answer Sets (Printer – Host)

Event: Print start

Set: #HSStart-*Pagename-Labelsrequested**

Example: #HSStart-NoName1-100*

Description: Indicates the start of a print order, including page name and number of labels to be printed.

Event: Printing completed

Set: #HSDone-*Pagename-Labelsprinted**

Example: #HSDone-NoName1-100*

Description: Indicates the completion of a print order including page name and number of printed labels.

Event: Printing stopped

Set: #HSHold-*Pagename-Labelsprinted**

Example: #HSHold-NoName1-10*

Description: Indicates the stopping of print order including page name and number of printed labels. Occurs when the user stopped the print order and/or after occurrence of an error.

Event: Continue printing

Set: #HSContinue-*Pagename-Labelsprinted**

Example: #HSContinue-NoName1-55*

Description: Indicates the continuation of print order including page name and number of printed labels. Occurs when the user restarts the print order.

Event: Cancel printing

Set: #HSAborted-*Pagename-Labelsprinted**

Example: #HSAborted-NoName1-57*

Description: Indicates the cancelation of printing including page name and number of printed labels.

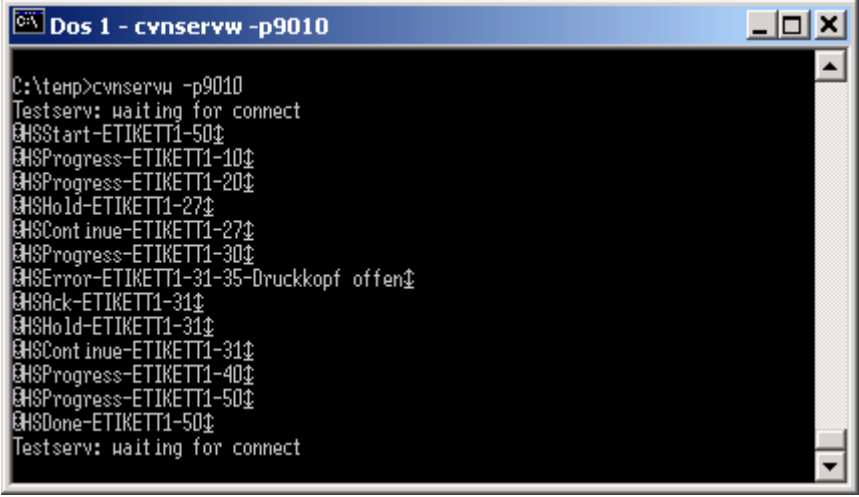
Event: Error**Set:** #HSError-*Pagename-Labelsprinted-ErrorID-Errormessage****Example:** #HSError-NoName1-57-28-Messerfehler***Description:** Indicates the occurrence of an error including page name, number of printed labels, error ID and error text.**Event:** Error confirmation at printer**Set:** #HSAck-*Pagename-Labelsprinted* ***Example:** #HSAck-NoName1-57***Description:** Indicates the confirmation of an error including page name and number of printed labels.**Event:** Print progress**Set:** #HSProgress-*Pagename-Labelsprinted* ***Example:** #HSProgress-NoName1-60***Description:** Indicates the progress of print order including page name and number of printed labels. This event is also returned as answer to status enquiry if the printer is printing.**Event:** Photocell value**Set:** #HSPhotocell-DLS:xxx-RLS:xxx***Example:** #HSPhotocell-DLS:3.8-RLS:1.9***Description:** Returns the values of transmission and reflexion photocell. The verification takes place every 5 ms; only changes are sent.**Event:** Encoder profile**Set:** # HSEnc-Dist:xxx-Speed:xxx***Example:** # HSEnc-Dist:120-Speed:202***Description:** Generates the profile of speed development of the packaging machine during a print order.**Event:** Answer to status enquiry (#FHS---r*)**Description:** The respective current print event is returned.

11.5 Sample Label

A simple label with monitoring of all parameters with output of the progress – all 10 labels could look as following:

```
FHM---rSP10E
//Ueberwachung einschalten
FHA---r2
// JOBNAME: "ETIKETT1"
FBE---rETIKETT1
// TYPE: Endlosetiketten
// HEIGHT: 20.00 mm
// GAPLENGTH: 2.00 mm
// COLUMNS: 1
// COLUMN DISTANCE: 100.00 mm
FCDA--r1-----
FCCL--r0002000-
FCCM--r00000---
FCCHA-r1-----
FCCHB-r999-----
// SPEED: 50 mm/s
FCAA--r050-----
// CONTRAST: 200%
FCAB--r200-----
// LABELCONTROL: 0
FCDE--r0-----
// RIBBONCONTROL: 1
// RIBBONSENS: 0
FCDB--r10-----
// MATERIAL: Typ 1
FCDNA-r0-----
FCDNB-r1-----
FCDNC-r0000----
// SCAN MODE: 0
// SCAN PORT: 0
// NO READ: 0
// FEED LABEL: 0
FCDM--r0000----
// MIRROR LABEL: Nein
FCDO--r0-----
// TEXT (1/100 mm)
AM[1]1407;6907;0;4;0;3;398;398;8
BM[1]Test
// SETLINENO: 1 lines
FBAA--r1
// SETCOPIES: 1
FBBA--r00050---
// PRINT
FBC---r-----
```

The server output, for example, looks as follows:



```
Dos 1 - cvnservw -p9010
C:\temp>cvnservw -p9010
Testserv: waiting for connect
@MSstart-ETIKETT1-50
@MSProgress-ETIKETT1-10
@MSProgress-ETIKETT1-20
@MSHold-ETIKETT1-27
@MSContinue-ETIKETT1-27
@MSProgress-ETIKETT1-30
@MSError-ETIKETT1-31-35-Druckkopf offen
@MSAck-ETIKETT1-31
@MSHold-ETIKETT1-31
@MSContinue-ETIKETT1-31
@MSProgress-ETIKETT1-40
@MSProgress-ETIKETT1-50
@MSDone-ETIKETT1-50
Testserv: waiting for connect
```

12 Font Examples

12.1 Bitmap Fonts (Not Proportional)

Font 01 (8 x 11) Verhältnis 3:3
 Font 02 (12 x 17) Verhältnis 3:3
 Font 03 (18 x 26) Verhältnis 2:2
 Font 04 (40 x 56) Verhältnis 1:1
 Font 05 (18 x 32 mit Unterlängen) Verhältnis 2:2
 Font 07 (12 x 22 mit Unterlängen) Verhältnis 2:2

12.2 Bitmap Fonts (Proportional)

Font 21 (10 proportional) Verhältnis 3:3
 Font 22 (18 proportional) Verhältnis 2:2
 Font 23 (26 proportional) Verhältnis 2:2
 Font 24 (56 proportional) Verhältnis 1:1
 Font 28 (40 proportional) Verhältnis 1:1
 Font 29 (8 proportional) Verhältnis 5:5

12.3 Vector Fonts

Absender (Baskerville) Das ist ein Musteretikett
 für die Darstellung der
 Gold, Petra (Swiss Light) Schriftarten (Monospace)

Name, Vorname (Helvetica Bold)
 Goldstraße 456 (Swiss Light)

Straße, Hausnummer (Helvetica Bold)

23456 Golddorf (Swiss Light)
 PLZ, Ort (Helvetica Bold)

Musterlieferung
Bitte bestätigen Sie
den Empfang. (Brush Script)

Empfänger (Baskerville)

Mustermann, Max (Helvetica Roman)
 Name, Vorname (Helvetica Bold)

Musterstraße 123 (Helvetica Roman)
 Straße, Hausnummer (Helvetica Bold)

45678 Musterstadt (Helvetica Roman)
 PLZ, Ort (Helvetica Bold)

13 Index

#

*FBAA, number of lines.....	86
*FBBA, total items of print order	87
*FBBB, labels still to print.....	87
*FBBC, already printed labels.....	87
*FBC, start printing.....	88
*FBD, start printing (w/o tear-off offset)	88
*FBE, start printing (assign printjob identifier)	88
*FBF, initialisation of page handling	88
*FBG, selection of current page.....	88
*FBH, order of pages	88
*FBI, generation of page w/o print start	88
*FCAA, print speed	56
*FCAB, contrast	52
*FCB, measure label.....	49
*FCCA, label synchronization at switching on	60
*FCCB, buzzer	58
*FCCBB, contrast.....	59
*FCCD, y offset	73
*FCCE, x offset	73
*FCCF, dispenser level photocell	61
*FCCFA, sensitivity dispenser photocell.....	61
*FCCG, tear off offset	73
*FCCHA, column printing (no. of columns).....	51
*FCCHB, column printing (column width)	51
*FCCJ, alignment.....	51
*FCCK, keyboard layout	58
*FCCL, label length.....	50
*FCCM, gap length	50
*FCCN, codepage.....	57
*FCCO, label width	50
*FCCP, external printer parameters	57
*FCCR, zero point adjustmetn (y value)	74
*FCCT, zero point adjustment (x value).....	74
*FCDA, label type	49
*FCDB, transfer ribbon speed.....	56
*FCDC, operating mode (dispenser I/O).....	61
*FCDE, label photocell.....	49
*FCDEA, scan position	53
*FCDEB, sensitivity transmission photocell	53
*FCDGA, label error length	50
*FCDGB, synchronisation	51
*FCDI, printer language	57
*FCDK, field handling.....	56
*FCDN, rotate label.....	52
*FCDNC, material selection	53
*FCDND, rotate label in 90 degrees	53
*FCDO, flip label	52
*FCDS, flip/rotate label	52
*FCDU, customized entry	58
*FCDW, hotstart.....	59
*FCDX, autoload	59

*FCFF, interface parameters	67
*FCGC, SOH/ETB.....	67
*FCGD, data memory	68
*FCGEA, reaction unknown questions	68
*FCHA, paper counter printer	78
*FCHB, paper counter printhead	78
*FCIA, date	78
*FCIB, time.....	78
*FCIK, time zone.....	79
*FCKA, password.....	80
*FCKB, function group (password)	80
*FCKDA, password function menu	81
*FCKDB, password favorites menu	81
*FCKDC, password memory card.....	81
*FCKDD, password printing manually	81
*FCLA, IP address (network).....	69
*FCLB, netmask (network).....	69
*FCLC, gateway address (network).....	69
*FCLD, transmission mode (network).....	70
*FCLE, DHCP support (network).....	70
*FCLF, printer name (network)	70
*FCLMB, MAC address (network)	70
*FCLNI, NTP server IP (network)	71
*FCLNS, NTP status (network).....	72
*FCLNZ, time zone (network)	72
*FCLZ, reset network device (network)	72
*FCMAA, label parameter a	54
*FCMAB, label parameter b	54
*FCMAC, label parameter c	54
*FCMBA, transfer ribbon photocell	54
*FCMBB, label photocell	55
*FCMBEA, dispenser photocell	55, 66
*FCMC, printhead temperature.....	75
*FCMDA, I/O inputs	62
*FCMDAB, I/O inputs	62
*FCMDB, I/O outputs	62
*FCMDBB, I/O outputs.....	62
*FCMDC, in signal level.....	63
*FCMDCB, in signal level.....	63
*FCMDD, out signal level.....	63
*FCMddb, out signal level	64
*FCMDF, software input.....	64
*FCMDFB, software input	64
*FCMDG, software output.....	65
*FCMDGB, software output	65
*FCMG, printhead resistance	77
*FCMH, reset error.....	86
*FCMHA, error ID/error text	86
*FCMKC, online/offline.....	74
*FCMKD, reprint action	75
*FCMKE, standard label	59
*FCMLA, ribbon prior warning	75
*FCMLB, ribbon prior warning diameter	76
*FCMLC, ribbon diameter	76
*FCMLDA, mode (ribbon prior warning)	76
*FCMLDB, reduced speed (ribbon prior warning)	76
*FCMP, winder output.....	75

*FCMQ, status print 89

*FCMRA, backfeed operating mode 60

*FCMRB, backfeed delay..... 60

*FCMT, print length correction 77

*FCNRA, custom logo..... 77

*FCPA, operating mode (applicator)..... 95

*FCPB, application mode (applicator)..... 95

*FCPC, support delay On (applicator) 95

*FCPD, support delay Off (applicator) 96

*FCPE, vacuum control (applicator) 96

*FCPF, blow time (applicator)..... 96

*FCPG, waiting position (applicator)..... 96

*FCPH, roll-on time (applicator)..... 97

*FCPI, inputs (applicator)..... 97

*FCPJ, outputs (applicator)..... 97

*FCPK, cleaning time (applicator)..... 98

*FCPL, timeout hub (applicator) 98

*FCPM, pressure control (applicator) 98

*FCPN, pressure time (applicator)..... 98

*FCPO, vacuum delay On (applicator) 99

*FCPP, vacuum delay Off (applicator)..... 99

*FCPQ, brake valve delay (quick apply) 99

*FCPR, transverse axis (applicator) 100

*FCPS, application signal (applicator) 100

*FCPU, delay lower end position (applicator) 100

*FCSDA, dispenser offset 73

*FCSDA, offset (dispenser I/O)..... 65

*FCSDD, start signal delay 65

*FCSDE, save start signal 66

*FCS DFA, continuous printing (operating mode) cancel..... 66

*FCSDFC, label change confirmation 60

*FCWB, high speed baud rate (WLAN) 94

*FCWC, connection status..... 91

*FCWD, DHCP support..... 91

*FCWE, encryption type (WLAN)..... 91

*FCWF, MAC address (WLAN) 91

*FCWG, Gateway address (WLAN)..... 92

*FCWH, high speed data connection (WLAN)..... 94

*FCWI, IP address (WLAN) 92

*FCWK, WPA/WPA2 key (WLAN) 92

*FCWM, netmask (WLAN) 93

*FCWP, server port (WLAN)..... 93

*FCWR, readout and transfer configuration (WLAN)..... 93

*FCWS, SSID identification (WLAN)..... 93

*FCWV, WEP64 key (WLAN) 94

*FCWW, WEP128 key (WLAN) 94

*FCWX, save settings and restart (WLAN)..... 94

*FD, start/stop command 86

*FE, feed 89

*FF, test print 89

*FGA, cancel print order 89

*FMA, save label (CF card)..... 82

*FMB, load file (cf card) 82

*FMC, delete layout (cf card) 82

*FMD, format (cf card) 82

*FMG, table of contents (cf card)..... 82

*FMH, memory space (cf card)..... 83

*FMI, create directory (cf card)	83
*FMJ, delete directory (cf card).....	83
*FMJA, delete directory path (cf card)	83
*FMK, change directory (cf card).....	83
*FMKB, standard directory via I/O (cf card)	84
*FML, transfer file (cf card)	84
*FMM, enquiry if the file exists (cf card).....	84
*FMP, size of cf card	84
*FMS, drive status (cf card)	85
*FZ, emulation.....	89

A

application mode (label applicator), parameter set	95
application signal (label applicator), parameter set.....	100
applicator inputs (label applicator), parameter set	97
applicator outputs (label applicator), parameter set	97
autoload.....	59

B

backfeed	
delay	60
operating mode.....	60
blow time (label applicator), parameter set	96
brake valve delay (label applicator), parameter set	99
buzzer.....	58

C

cleaning time (label applicator), parameter set	98
codepage.....	57
column printing	51
compact flash card	
change directory	83
create directory	83
delete directory	83
delete directory path	83
delete layout	82
drive status	85
enquiry if the file exists	84
format card.....	82
load file.....	82
readout free memory space.....	83
save label.....	82
size of cf card.....	84
standard directory via I/O.....	84
transfer file	84
configuration and status	
autostatus	102, 103
saving.....	101
status enquiry	101
status return information	101
configuration, readout and transfer (WLAN)	93
connection status (WLAN).....	91
contrast.....	52, 59
custom logo	77
customized entry	58

D	
data format	
explanation	10
field attributes	11
field name	12, 13, 14, 15, 16
field properties	11
field selection	16
general information	9
data memory	68
date/time	
date	78
time	78
time zone	79
datum point (text, bar code, graphic)	7
delay lower end position (label applicator), parameter set.....	100
DHCP support	
network	70
WLAN.....	91
dispenser I/O	
continuous printing (operating mode)	66
dispenser level photocell	61
dispenser photocell.....	66
I/O inputs	62
I/O outputs	62
in signal level	63
mode	61
offset	65
out signal level	63, 64
save start signal.....	66
sensitivity dispenser photocell	61
software input	64
software output	65
start signal delay.....	65
dispenser photocell	55
dispenser, offset.....	73
display brightness.....	59
E	
emulation	89
encryption type (WLAN)	91
external printer parameters	57
F	
feed.....	89
field handling	56
flip label	52
font examples	
bitmap fonts (not proportional).....	109
bitmap fonts (proportional).....	109
vector fonts	109
format identifier, date/time	39, 40, 41
G	
gap length.....	50
gateway address	
network	69
WLAN.....	92

generation, selected page	88
graphic set	
general graphic format	33
PCX format	34
PCX-format	33
H	
high speed baud rate (WLAN).....	94
high speed data connection (WLAN)	94
hotstart.....	59
I	
in signal level (dispenser I/O)	63
initialisation of page handling	88
inputs I/O (dispenser I/O)	62
interface	
parameters.....	67
SOH/ETB	67
IP address	
network	69
WLAN.....	92
K	
key (WLAN)	
WEP128.....	94
WEP64	94
WPA/WPA2	92
keyboard layout	58
L	
label	
alignment	51
column printing	51
flip	52
label change confirmation	60
label error length	50
label photocell.....	49, 55
label type	49
length	50
measure	49
rotate.....	52
standard label	59
synchronization at switching on	60
width.....	50
label applicator	
application mode.....	95
application signal	100
applicator inputs.....	97
applicator outputs	97
blow time.....	96
brake valve delay	99
cleaning time.....	98
delay lower end position	100
operating mode	95
pressure control	98
pressure time	98
roll-on time	97

support delay Off 96
 support delay On 95
 timeout hub 98
 transverse axis 100
 vacuum control 96
 vacuum delay 99
 label parameters
 column printing 51
 contrast 52
 flip label 52
 gap length 50
 label alignment 51
 label error length 50
 label length 50
 label photocell 49
 label rotation in 90 degrees 53
 label type 49
 label width 50
 material selection 53
 measure label 49
 rotate label 52
 scan position 53
 sensitivity transmission photocell 53
 synchronisation 51
 label photocell
 level maximal (label parameter b) 54
 level minimal (label parameter a) 54
 switching threshold (label parameter c) 54
 label rotation in 90 degrees 53
 line number 86

M

MAC address
 network 71
 WLAN 91
 mask set
 bar code Aztec code 28
 bar code CODABLOCK F 25
 bar code DataMatrix 23
 bar code GS1 DataMatrix 24
 bar code MAXICODE 22
 bar code PDF417 21
 bar code QR code 27
 bar code, GS1 DataBar (RSS) 26
 bar code, ITF 20
 bar code, one-dimensional 19
 internal graphic 30
 line 29
 rectangle 29
 text 17, 18
 material selection 53
 measure, label 49
 monitored printing 105, 106, 107, 108

N

netmask
 network 69
 WLAN 93

network	
DHCP support.....	70
gateway address.....	69
IP address.....	69
MAC address.....	71
netmask.....	69
NTP server IP.....	71
NTP status.....	72
printer name.....	70
reset network device.....	72
time offser (hour offset).....	72
transmission mode.....	70
NTP server IP.....	71
NTP status.....	72

O

offset values	
dispenser.....	73
tear off offset.....	73
x offset.....	73
y offset.....	73
online/offline.....	74
order (pages to print).....	88
out signal level (dispenser I/O).....	63, 64
outputs I/O (dispenser I/O).....	62

P

paper counter	
printer.....	78
printhead.....	78
parameter sets	
compact flash card.....	82, 83, 84, 85
data memory.....	68
date/time.....	78, 79
dispenser I/O.....	61, 62, 63, 64, 65, 66
emulation.....	89
interface.....	67
interface protocol.....	67
label applicator, option.....	95, 96, 97, 98, 99
label parameters.....	49, 50, 51, 52, 53
network.....	69, 70, 71, 72
offset values.....	73
password.....	80, 81
password favorites menu.....	81
password function menu.....	81
password memory card.....	81
password printing manually.....	81
photocells.....	54, 55
printer parameters.....	56, 57, 58, 59
printing.....	86, 87, 88, 89
service functions.....	75, 76, 77
service funtions.....	74
WLAN (option).....	91, 92, 93, 94
password.....	80, 81
photocell	
dispenser photocell.....	55
label photocell.....	55

level maximal (label parameter b)	54
level minimal (label parameter a)	54
switching threshold	54
transfer ribbon photocell	54
photocell, label photocell	49
pressure control (label applicator), parameter set	98
pressure time (label applicator), parameter set.....	98
print length correction.....	77
print order, cancel.....	89
print speed.....	56
printer	
language	57
name	70
printer parameters	
autoload	59
backfeed, delay.....	60
backfeed, operating mode	60
buzzer	58
codepage	57
contrast	59
customized entry.....	58
external printer parameters	57
field handling.....	56
hotstart.....	59
keyboard layout	58
label change confirmation.....	60
label synchronization at switching on	60
print speed.....	56
printer language.....	57
standard label	59
transfer ribbon control.....	56
printhead	
resistance	77
temperature	75
printing	
cancel print orders	89
feed.....	89
generation of selected page	88
initialisation of page handling	88
item number of print order	87
number of lines	86
print order	88
reset error	86
selection of current page	88
start printing	88
start/stop command.....	86
status printing	89
test print	89
printing, start.....	88

R

reaction, unknown questions.....	68
reprint action.....	75
reset error	86
reset network device	72
roll-on time (label applicator), parameter set.....	97
rotate label.....	52
rotation (text, bar code, graphic)	7

S

save settings and restart (WLAN)	94
scan position	53
sensitivity transmission photocell	53
serial data transmission	
connection plan RS232.....	6
connector assignment.....	5
server port (WLAN)	93
service functions	
custom logo	77
online/offline.....	74
print length correction	77
printhead resistance	77
printhead temperature	75
reprint action	75
transfer ribbon prior warning.....	75
transfer ribbon prior warning, diameter.....	76
transfer ribbon prior warning, mode.....	76
transfer ribbon prior warning, reduced speed	76
winder output	75
zero point adjustment (x value)	74
zero point adjustment (y value)	74
software input (dispenser I/O)	64
software output (dispenser I/O).....	65
SOH/ETB	67
speed.....	56
SSID identification (WLAN)	93
standard label.....	59
start/stop command	86
status print.....	89
support delay Off (label applicator), parameter set.....	96
support delay On (label applicator), parameter set.....	95
switching threshold, photocell	54
synchronisation	51
synchronization at switching on	60

T

tear off offset	73
test print.....	89
text set	
example	32
general information	31
time zone (hour offset)	72
timeout hub (label applicator), parameter set.....	98
transfer ribbon photocell.....	54
transfer ribbon prior warning	75
diameter	76
mode.....	76
reduced speed	76
transmission mode	70
transverse axis (label applicator), parameter set	100

V

vacuum control (label applicator), parameter set.....	96
vacuum delay (label applicator), parameter set	99

variables

- check digit 47
- counter 36
- counter, extended 37
- currency variable 42
- date/time 38, 39, 40, 41
- GS1-128 parser 46
- link field 35
- memory card data 46
- set structure 35
- shift variable 43
- substring 48
- user guiding 44
- user guiding with mask 45

W

- waiting position (label applicator), parameter set 96
- winder output 75

WLAN

- connection status 91
- DHCP support 91
- encryption type 91
- Gateway address 92
- high speed baud rate 94
- high speed data connection 94
- IP address 92
- MAC address 91
- netmask 93
- readout and transfer configuration 93
- save settings and restart 94
- server port 93
- SSID identification 93
- WEP128 key 94
- WEP64 key 94
- WPA/WPA2 key 92

X

- x offset 73

Y

- y offset 73

Z

- zero point adjustment (x value) 74
- zero point adjustment (y value) 74



Carl Valentin GmbH
Neckarstraße 78 – 86 u. 94
78056 Villingen-Schwenningen
Phone +49 7720 9712-0
info@carl-valentin.de
www.carl-valentin.de

