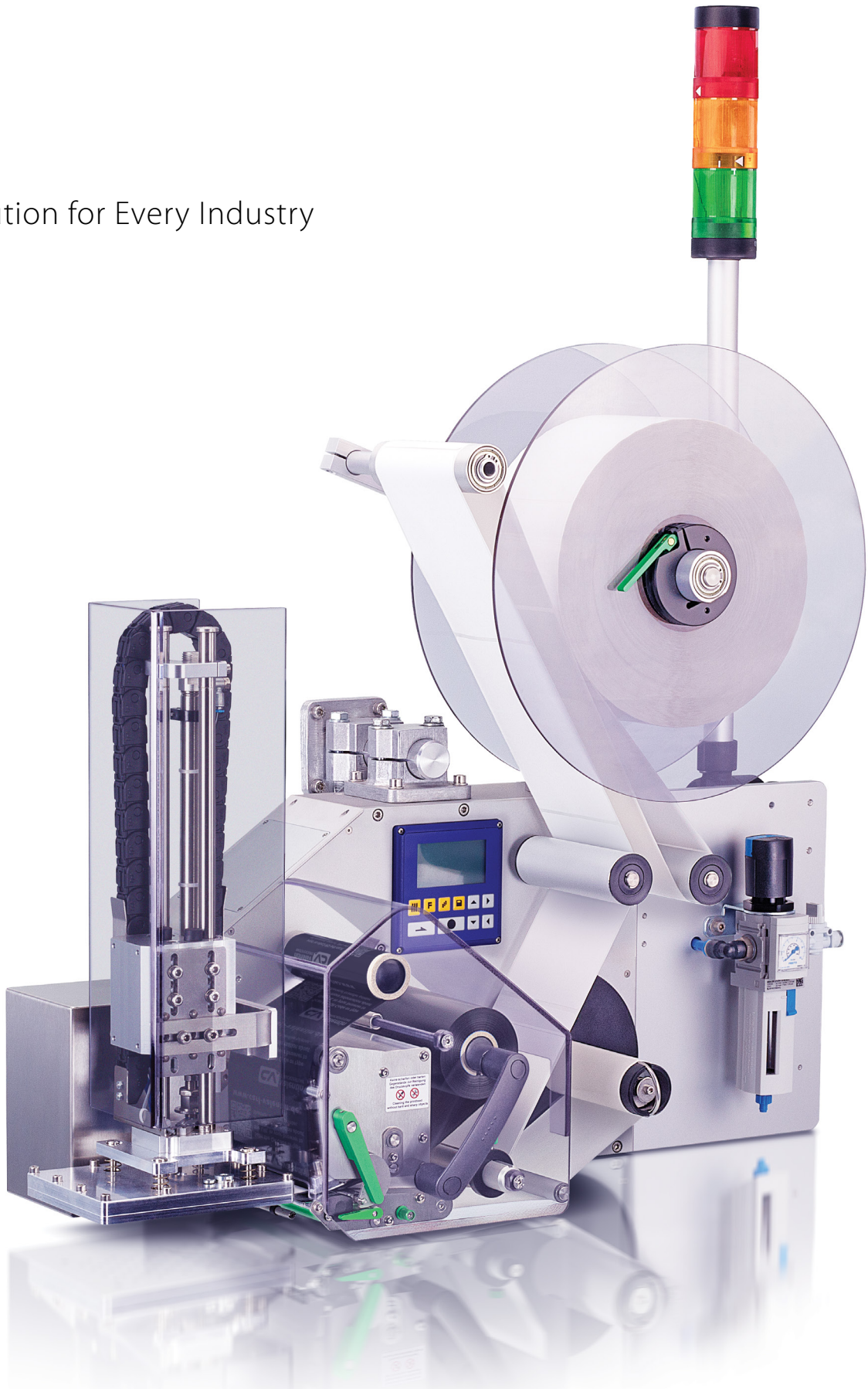


ILX V

The Solution for Every Industry



ILX V

The new Print & Apply Generation

With the ILX V Series, Carl Valentin GmbH unveils the next generation of its trusted "Print & Apply" systems. Whether print module, applicator or dispensing system, this new generation combines maximum performance, exceptional stability and enhanced flexibility within a unified, precision-engineered design. Powered by state-of-the-art V Series hardware and optimised mechanics, the ILX V Series sets new benchmarks in label printing and application.

High performance thanks to a new core processor

At the heart of the V Series is a completely redesigned system architecture featuring a powerful core processor. This enables high print speeds, rapid data processing and future-ready system performance.

Especially in demanding production environments, the new hardware delivers consistently high efficiency and maximum process reliability.

Maximum stability across all print widths

All print widths in the V Series now feature dual bearings, ensuring greater strength and precise print results, while simultaneously reducing wear and extending service life.

The replaceable print roller further improves serviceability, allowing fast, tool-optimised maintenance designed to minimise production downtime.

Standardised basic housing for maximum flexibility

A unified housing concept across all print widths delivers clear benefits. It simplifies integration into existing systems, reduces spare parts requirements and ensures consistent operating and servicing processes. In addition, the mounting flanges can now be installed either on the top or the bottom.

Moreover, the new underside mounting option greatly increases integration flexibility, making it ideal for complex machine layouts or tight installation spaces.

Greater connectivity and intelligent enhancements

The ILX V Series also impresses with a range of practical upgrades:

- > SD card interface for flexible data usage
- > Adjustable label photocell across all print widths
- > Enhanced and refined proven options

The result is greater adaptability across a wide variety of label formats and production requirements.

Your benefits at a glance

- > New generation featuring a powerful V Series core processor
- > Print widths feature dual bearings for maximum strength
- > Quick-change print roller across all formats
- > Standardised basic housing
- > New mounting options for flexible integration
- > SD card interface
- > Adjustable label photocell
- > Increased print speeds
- > Optimised and enhanced options
- > Improved safety and CE-compliant pneumatic applicator

Machines/Automation



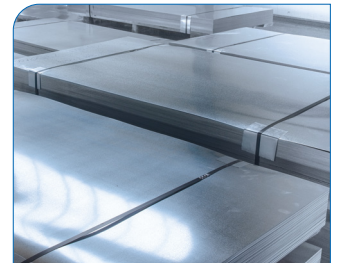
Chemical industry



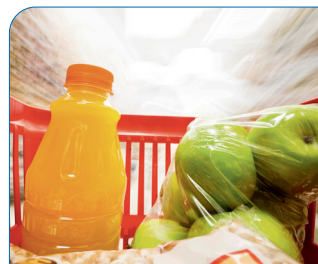
Wood industry



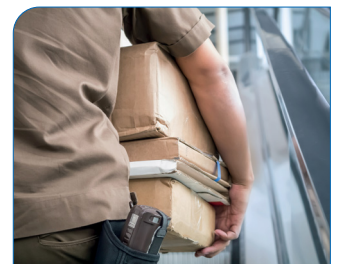
Industrial manufacturing

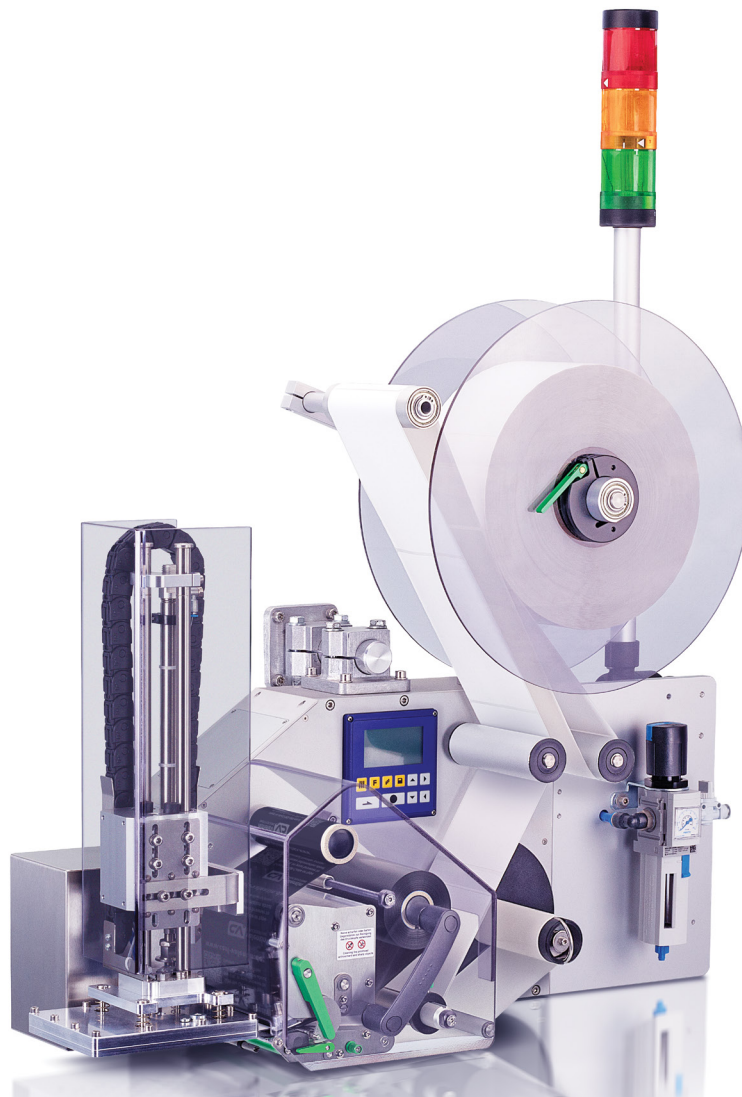


Food industry



Transport and logistics





ILX V Print & Apply System

innovative . versatile . precise

- > Printing and applying in one step
- > Various mounting positions - even at the side and overhead
- > Improved safety and CE-compliant pneumatic applicator
- > Just in time and demand-oriented product labeling in real time
- > Labeling onto packaging or product
- > Signal lamp for indication of device status
- > "Quick-Apply" function (APX V)
- > Wipe-on procedure (WMX)
- > Label sizes up to 116 x 200 mm
- > Label unwinding unit up to Ø 330 mm

Flexible integration, highly variable



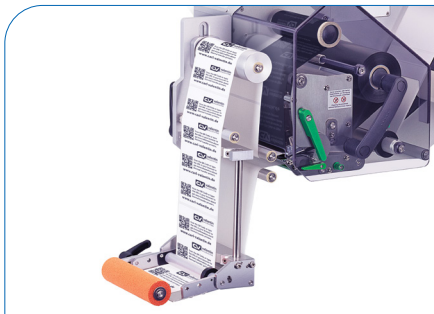
ILX V 5X, 8X and 10X

- > Right and left version
- > Robust construction in aluminium and stainless steel
- > Multilingual operating and display unit, rotatable and displaceable (dependent on installation position)
- > Integrated transfer ribbon rewinder
- > External inputs/outputs for simple integration in packaging machines



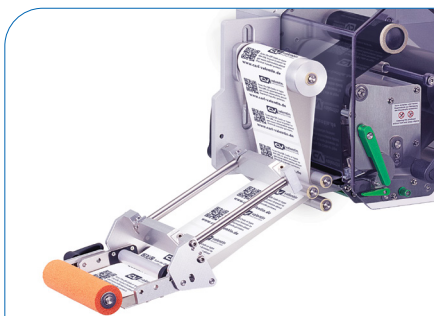
APX V

- > Right and left version
- > Variable product heights
- > Label transfer: stamp on, blow on, roll on
- > Labeling from top, bottom and from side
- > Service unit
- > Swing-type applicator



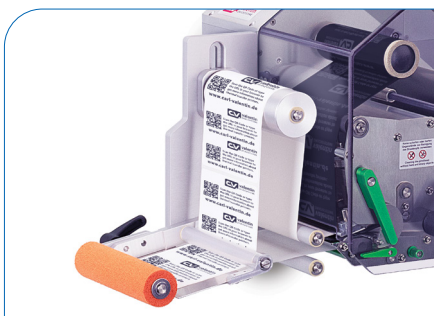
WMX 5015E, 5115E, 5215E, 5315E, 5415E and 5515E

- > Right and left version
- > 90 degrees version
- > Dispensing angle infinitely variable
- > Holding shafts cut to length as needed
- > Labeling from top, bottom and from the side
- > Label transfer: with roll or brush



WMX 5010E, 5110E, 5210E, 5310E, 5410E and 5510E

- > Right and left version
- > Dispensing angle infinitely variable
- > Holding shafts cut to length as needed
- > Labeling from top, bottom and from the side
- > Label transfer: with roll or brush



WMX 5001E, 5101E, 5201E, 5301E, 5401E and 5501E

- > Right and left version
- > Dispensing angle adjustable
- > Labeling from top, bottom and from the side
- > Label transfer: with roll or brush

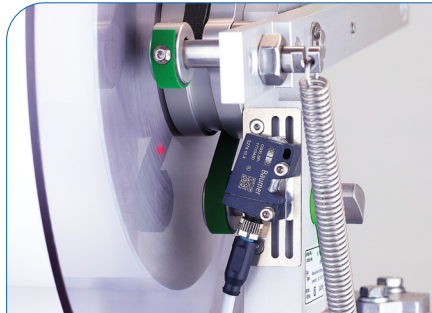
ILX V options



Signal lamp

The optional signal lamp indicates in addition the device display the printer status:
 Red = Malfunctions at the printer/labeller
 Yellow = Advance warning end of ribbon
 Green = Ready

Mounting is performed directly at the optional carrier plate extension of ILX V or in any place in the environment dependent on the length of connecting cable.



Label prewarning

With the optional label prewarning, the early end of material will be displayed. Hereby the process of the print order is not immediately interrupted. The moment of prewarning can be set mechanically.

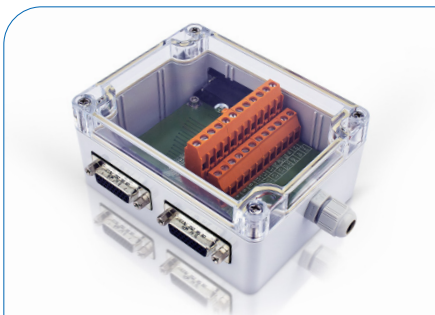
Mounting is performed directly at the optional label unwinder of ILX V.



Carrier plate extension

At the optional carrier plate extension different components can be attached e.g. signal lamp, distribution box and the service unit of a pneumatic applicator (APX V).

Mounting is performed directly at the back side of the ILX V carrier plate.



Distribution box

The optional distribution box offers the possibility to connect simultaneously up to two completely assembled Valentin components e.g. signal lamp and product sensor with the inputs/outputs of the printing system.

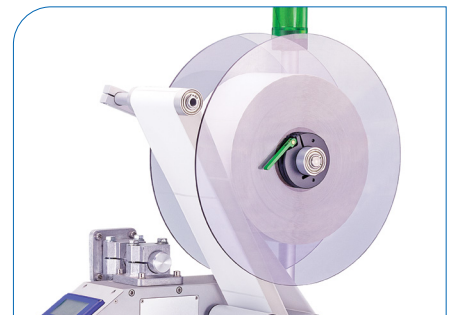
Mounting is performed directly at the optional carrier plate extension of ILX V or in any place in the environment dependent on the length of connecting cable.



Fixing flanges

The different optional flange versions offer the possibility to integrate the ILX V hanging-mounted in a production line. The fixing flanges are available with 30 mm or 40 mm diameter.

Mounting is performed directly on the cover board of ILX V.



External unwinders

The optional external unwinders are applicable both for internal and external wound labels up to an outside diameter of 330 mm. A regular label supply of large label rolls can be regulated with the integrated brake.

	ILX V 56/8	ILX V 80/8	ILX V 54/12	ILX V 81/12
Printing				
Print resolution	200 dpi	200 dpi	300 dpi	300 dpi
Print speed	max. 350 mm/s ¹ max. 400 mm/s ²	max. 350 mm/s ¹ max. 400 mm/s ²	max. 350 mm/s ¹ max. 400 mm/s ²	max. 350 mm/s ¹ max. 400 mm/s ²
Print width	max 56 mm	max 80 mm	max 54 mm	max 81 mm
Passage width	max 60 mm	max 90 mm	max 60 mm	max 90 mm
Printhead	Flat Type	Flat Type	Flat Type	Flat Type
Labels				
Adhesive labels, continuous labels	paper, cardboard, textile, synthetics			
Material weight	max 220 g/m ² (larger on demand)			
Label width	min 20 mm			
Label height	min 15 mm			
Label height	max 3000 mm			
Roll diameter internal rewinder external unwinder	max 150 mm max 330 mm (option)			
Core diameter	40 mm / 76 mm			
Winding	outside or inside			
Label sensor	transmission			
Transfer Ribbons				
Ink	outside or inside			
Core diameter	25.4 mm / 1"			
Roll diameter	max Ø 80 mm			
Length	max 450 m			
Width	max 55 mm	max 85 mm	max 55 mm	max 85 mm
Fonts				
Font types	6 bitmap fonts 8 vector fonts/TrueType fonts 6 proportional fonts more fonts on demand			
Bar Codes				
1D bar codes	2/5 Industrial, Codabar, Code 128, Code 128A, Code 128B, Code 2/5 interleaved, Code 39, Code 39 extended, Code 93, EAN 13, EAN 8, EAN Add-on, GS1-128, Identcode, ITF 14, Leitcode, Pharmacode, PLANET (Postal Alpha Numeric Encoding Technique), PostNet, PZN 7, PZN 8, UPC-A, UPC-E, USPS Intelligent Mail			
2D bar codes	Aztec Code, CODABLOCK F, DataMatrix, GS1 DataMatrix, MAXICODE, PDF 417, QR Code			
GS1 bar codes	GS1 DataBar Expanded, GS1 DataBar Limited, GS1 DataBar Omnidirectional, GS1 DataBar Stacked, GS1 DataBar Stacked Omnidirectional, GS1 DataBar Truncated			
Dimensions				
width x height x depth	211 x 281 x 375 mm	234 x 281 x 375 mm	211 x 281 x 375 mm	234 x 281 x 375 mm
Weight				
Weight	10.6 kg	11.1 kg	10.6 kg	11.1 kg
Interfaces				
Serial	RS-232C (max 115,200 baud)			
USB	2.0 High Speed Slave			
Ethernet	10/100 Base T, LPD, RawIP-Printing, DHCP, HTTP, FTP			
2 x USB host	on the back for keyboard, USB memory stick			
WLAN (option)	USB WLAN stick			
Operation Data				
Nominal voltage	110 ... 240 V AC / 50 - 60 Hz			
Nominal current	2.5 A			
Fuse values	T5A 250 V			
Operating temperature	5 ... 40 °C			
Max. humidity	80% (non-condensing)			

¹ = for thermal transfer . ² = for thermal direct

	ILX V 103/8	ILX V 104/8	ILX V 106/12	ILX V 106/24	ILX V 108/12
Printing					
Print resolution	203 dpi	203 dpi	300 dpi	600 dpi	300 dpi
Print speed	max. 350 mm/s ¹ max. 400 mm/s ²	max. 350 mm/s ¹ max. 400 mm/s ²	max. 350 mm/s ¹ max. 400 mm/s ²	max. 100 mm/s	max. 350 mm/s ¹ max. 400 mm/s ²
Print width	max 104 mm	max 104 mm	max 105.7 mm	max 105.7 mm	max 108.4 mm
Passage width	max 116 mm	max 116 mm	max 116 mm	max 116 mm	max 116 mm
Printhead	Flat Type	Flat Type	Flat Type	Flat Type	Flat Type
Labels					
Adhesive labels, continuous labels	paper, cardboard, textile, synthetics				
Material weight	max 220 g/m ² (larger on demand)				
Label width	min 25 mm				
Label height	min 15 mm				
Label height	max 3000 mm				
Roll diameter internal rewinder external unwinder	max 150 mm max 330 mm (option)				
Core diameter	40 mm / 76 mm				
Winding	outside or inside				
Label sensor	transmission				
Transfer Ribbons					
Ink	outside or inside				
Core diameter	25.4 mm / 1"				
Roll diameter	max Ø 80 mm				
Length	max 450 m				
Width	max 110 mm				
Fonts					
Font types	6 bitmap fonts 8 vector fonts/TrueType fonts 6 proportional fonts more fonts on demand				
Bar Codes					
1D bar codes	2/5 Industrial, Codabar, Code 128, Code 128A, Code 128B, Code 2/5 interleaved, Code 39, Code 39 extended, Code 93, EAN 13, EAN 8, EAN Add-on, GS1-128, Identcode, ITF 14, Leitcode, Pharmacode, PLANET (Postal Alpha Numeric Encoding Technique), PostNet, PZN 7, PZN 8, UPC-A, UPC-E, USPS Intelligent Mail				
2D bar codes	Aztec Code, CODABLOCK F, DataMatrix, GS1 DataMatrix, MAXICODE, PDF 417, QR Code				
GS1 bar codes	GS1 DataBar Expanded, GS1 DataBar Limited, GS1 DataBar Omnidirectional, GS1 DataBar Stacked, GS1 DataBar Stacked Omnidirectional, GS1 DataBar Truncated				
Dimensions					
width x height x depth	263 x 281 x 375 mm				
Weight					
Weight	11.5 kg				
Interfaces					
Serial	RS-232C (max 115,200 baud)				
USB	2.0 High Speed Slave				
Ethernet	10/100 Base T, LPD, RawIP-Printing, DHCP, HTTP, FTP				
2 x USB host	on the back for keyboard, USB memory stick				
WLAN (option)	USB WLAN stick				
Operation Data					
Nominal voltage	110 ... 240 V AC / 50 - 60 Hz				
Nominal current	2.5 A				
Fuse values	T5A 250V				
Operating temperature	5 ... 40 °C				
Max. humidity	80% (non-condensing)				

¹ = for thermal transfer . ² = for thermal direct

APX V

Label transfer/operating modes	Stamp on	Blow on	Roll on
Label width			
ILX V 5X	20 ... 56 mm	20 ... 56 mm	20 ... 56 mm
ILX V 8X	20 ... 86 mm	20 ... 86 mm	20 ... 86 mm
ILX V 10X	20 ... 112 mm	20 ... 112 mm	20 ... 112 mm
Label height universal pad	15 ... 210 mm	15 ... 100 mm	70 ... 210 mm
Utilizable cylinder stroke			
200 mm cylinder	170 mm	170 mm	200 mm
300 mm cylinder	270 mm	270 mm	300 mm
400 mm cylinder	370 mm	370 mm	400 mm
Compressed air pressure	5 bar	5 bar	5 bar
Product surface	flat	flat	flat
Product height variable	●	–	●
Product height fixed	●	●	●
Product fixed	●	●	–
Product linear movement	–	●	●
Labeling from top	●	●	●
Labeling from bottom	●	●	●
Labeling from the side	●	●	●
Retraction depth	25 mm	–	–
Direction	right and left version		
Compressed air control/vacuum control	available		
Service unit	filter regulation with manometer and block valve		
Voltage supply / current supply	by label printing systems		
Dimensions APX V (W x H x D)	APX V 200: 237 x 423 x 126 mm APX V 300: 237 x 523 x 126 mm APX V 400: 237 x 623 x 126 mm		
Weight APX V	5 kg (APX V 200)		

The applicator APX V is an additional module for the print systems of ILX V series and serves the automatic application of printed labels onto a product. The direct and automatic label application is done using a stamp with suction and applies the label using vacuum technology. The process is automatically monitored and controlled by sensors.



Wipe-On Applicator	WMX 5015E	WMX 5115E	WMX 5215E	WMX 5315E	WMX 5415E	WMX 5515E
Print module	ILX V 5X (right)	ILX V 5X (left)	ILX V 8X (right)	ILX V 8X (left)	ILX V 10X (right)	ILX V 10X (left)
Passage width	60 mm	60 mm	90 mm	90 mm	116 mm	116 mm
Label width	min 20 mm	min 20 mm	min 20 mm	min 20 mm	min 25 mm	min 25 mm
Label height	min 15 mm, max 200 mm The maximum label height depends on the length of holding shafts as well as on the installation position of print module and wipe-on applicator.					
Buffer length	The buffer length from printhead to dispensing edge depends on the length of holding shafts as well as on the installation position of print module.					
Distance	The distance from bottom edge print module to labeling level is variable.					
Weight	1.5 kg ¹⁾	1.5 kg ¹⁾	1.8 kg ¹⁾	1.8 kg ¹⁾	2.1 kg ¹⁾	2.1 kg ¹⁾

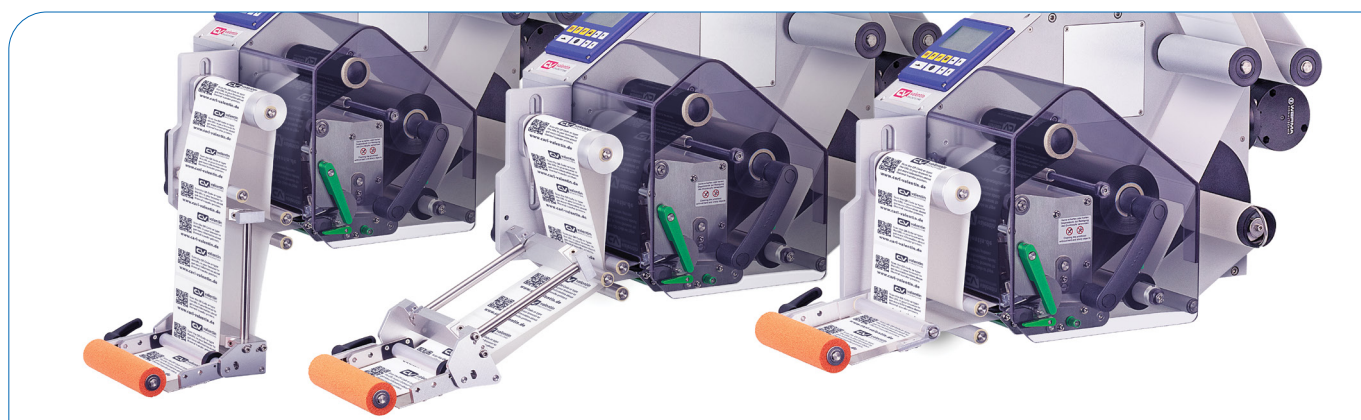
¹⁾ The weight refers to holding shafts with a length of 300 mm

Wipe-On Applicator	WMX 5010E	WMX 5110E	WMX 5210E	WMX 5310E	WMX 5410E	WMX 5510E
Print module	ILX V 5X (right)	ILX V 5X (left)	ILX V 8X (right)	ILX V 8X (left)	ILX V 10X (right)	ILX V 10X (left)
Passage width	60 mm	60 mm	90 mm	90 mm	116 mm	116 mm
Label width	min 20 mm	min 20 mm	min 20 mm	min 20 mm	min 25 mm	min 25 mm
Label height	min 15 mm, max 200 mm The maximum label height depends on the length of holding shafts as well as on the installation position of print module and wipe-on applicator.					
Buffer length	The buffer length from printhead to dispensing edge depends on the length of holding shafts as well as on the installation position of print module.					
Distance	The distance from bottom edge print module to labeling level is variable.					
Weight	1.5 kg ¹⁾	1.5 kg ¹⁾	1.8 kg ¹⁾	1.8 kg ¹⁾	2.1 kg ¹⁾	2.1 kg ¹⁾

¹⁾ The weight refers to holding shafts with a length of 300 mm

Wipe-On Applicator	WMX 5001E	WMX 5101E	WMX 5201E	WMX 5301E	WMX 5401E	WMX 5501E
Print module	ILX V 5X (right)	ILX V 5X (left)	ILX V 8X (right)	ILX V 8X (left)	ILX V 10X (right)	ILX V 10X (left)
Passage width	60 mm	60 mm	90 mm	90 mm	116 mm	116 mm
Label width	min 20 mm	min 20 mm	min 20 mm	min 20 mm	min 25 mm	min 25 mm
Label height	min 15 mm max 130 mm	min 15 mm max 130 mm	min 15 mm max 130 mm	min 15 mm max 130 mm	min 15 mm max 200 mm	min 15 mm max 200 mm
Buffer length	296 mm – 477 mm (printhead to dispensing edge)					
Distance	14.9 mm ¹⁾ – 38.5 mm ²⁾					
Weight	0.8 kg	0.8 kg	1.0 kg	1.0 kg	1.2 kg	1.2 kg

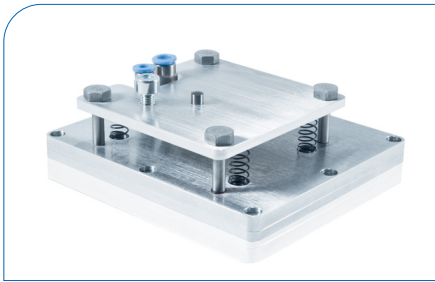
¹⁾ The first value refers to the minimum dispensing angle · ²⁾ The second value refers to the maximum dispensing angle



APPLICATION

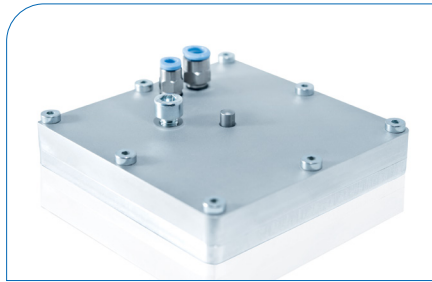
Accessories for applying printed labels

- > For applying the printed label onto the product
- > For print module ILX V 5X, 8X and 10X
- > Adapted for left and right device versions



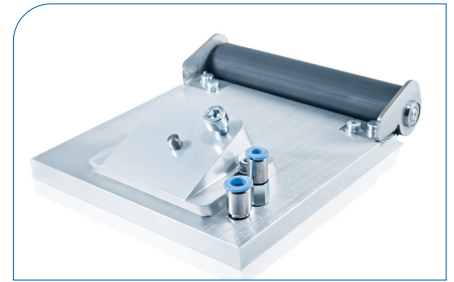
Tamp pad

During the print and apply cycle the product remain fixed. The universal tamp is covered by a foil. According to the size of the label the holes can be pierced. The tamp pads are customized to the dimensions of the label sizes on request.



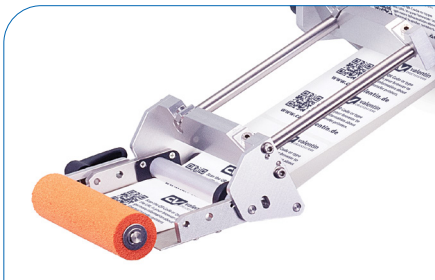
Blow pad

For non-applying pressure to sensitive products, the label can be blown onto the product with the supporting air jet stream. The print and apply cycle performs in a fixed position or in a linear movement of the product. The blow pad moves to a preadjusted position approx. 10 mm away



Roll-on pad

In the starting position the label is forwarded until touching the roller of the roll-on pad. At the labeling position the roller is pressed onto the product. Then the label is applied and rolled on by the movement of the products.



Pressure roller

The printed label is removed from backing paper at the dispensing edge of wipe-on applicator and then applied to the product with the pressure roller.



Pressure brush

The printed label is removed from backing paper at the dispensing edge of wipe-on applicator and then applied to the product with the pressure brush. The pressure brush is used if the label is to be applied onto an uneven surface.

Labels

The maximum number of possibilities

What applies to our printing systems also applies to our labels: almost unlimited choice and individual solutions for all industries. We supply plastic, paper or cardboard labels on a roll in a wide range of formats: pre-printed or blank, removable or permanent, exactly to your requirements. We thus bring any labeling to your product!









Transfer ribbons

For a perfect transfer.

Our transfer ribbons are optimally adapted for use with our printing systems and labels. They are available in standard (wax), premium (wax/resin) and special (resin) versions. Whether on paper or plastic, scratch and smudge proof, high-resolution – we offer you the ideal solution for any requirement.



- Label applicator 
- Thermal printhead 
- Touch panel 
- Config Tool 
- Labelstar Office 
- Loftware 

Local retailer

Branches:

Sales office Bavaria

Marienplatz 8a . 83043 Bad Aibling
Phone +49 8061 3498888 . rstreck@carl-valentin.de

Sales office Spain

Pol. POCOMACO . Sector I – Nave 30 (Edificio Diana trasera) . 15190 – A Coruña
Mobile +34 609 022241 . mllano@carl-valentin.es



Carl Valentin GmbH
Neckarstraße 78–86 u. 94
78056 Villingen-Schwenningen
Phone +49 7720 9712-0
info@carl-valentin.de . www.carl-valentin.de

